

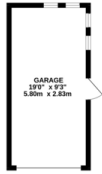



Andrew Pearce
PINNER

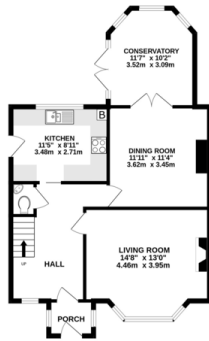
LIME GROVE, RUISLIP, HA4 8RY £725,000



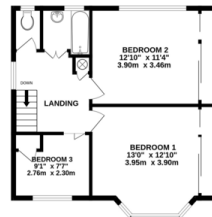
OUTBUILDING
177 sq ft (16.4 sq m) approx.



GROUND FLOOR
348 sq ft (32.2 sq m) approx.



1ST FLOOR
346 sq ft (32.0 sq m) approx.



TOTAL FLOOR AREA: 1306 sq ft (120.8 sq m.) approx.
Whilst every attempt has been made to ensure the accuracy of the footprints contained here, measurements of doors, windows, rooms and any other items are approximate and no responsibility is taken for any error, omission or misstatement. This plan is for illustrative purposes only and should be used as such by any prospective purchaser. The services, systems and appliances shown have not been tested and no guarantee as to their operability or efficiency can be given.
Made with Hefron ©2023



