



354



Andrew Pearce

PINNER

FIELD END ROAD, RUISLIP, HA4 9PG

£685,000



A spacious three bedroom semi-detached family home located 0.3 miles from Eastcote's Metropolitan & Piccadilly Line Station.

A charming three-bedroom semi-detached family home, well-maintained and nestled in a sought-after locale close to Eastcote Station and Field End Road High Street.

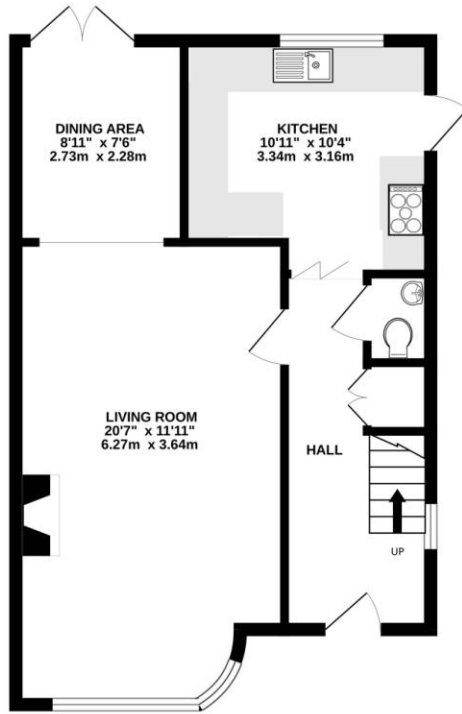
The ground floor accommodation comprises of a large entrance hallway, which leads to a bright and spacious reception room with a cozy fireplace, perfect for entertaining and time with family. The living room opens into the dining space with direct access to the garden. The contemporary kitchen is fitted with base and eye level units. The property also benefits from a downstairs WC. Upstairs are three well-appointed bedrooms. Bedroom 1 and 2 also benefit from built in wardrobes, which are great for additional storage. The first floor is complete with a tasteful and fresh bathroom with separate WC.

The property is a perfect fit for a growing family, boasting seamless ground floor living spaces, a secluded garden offering privacy, and generous off-street parking.

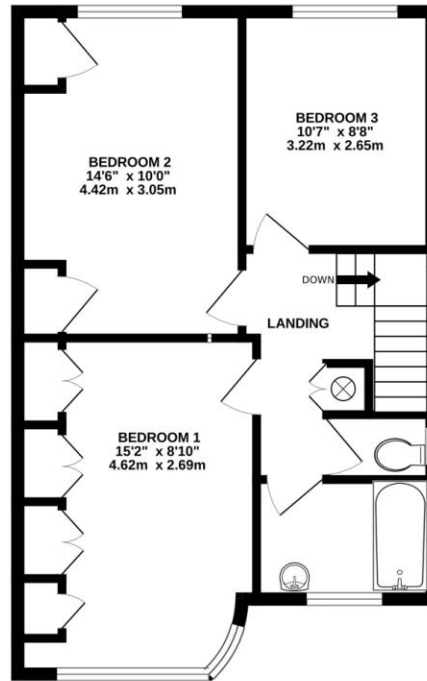


Conveniently situated for access to local transport and within proximity to great schools such as Field End, Newnham Infant & Nursery School, Cannon Lane and Pinner High and Bishop Ramsey C of E School.

GROUND FLOOR
512 sq.ft. (47.6 sq.m.) approx.



1ST FLOOR
513 sq.ft. (47.6 sq.m.) approx.



TOTAL FLOOR AREA: 1025 sq.ft. (95.2 sq.m.) approx.

Whilst every attempt has been made to ensure the accuracy of the floorplan contained here, measurements of doors, windows, rooms and any other items are approximate and no responsibility is taken for any error, omission or mis-statement. This plan is for illustrative purposes only and should be used as such by any prospective purchaser. The services, systems and appliances shown have not been tested and no guarantee as to their operability or efficiency can be given.
Made with Metropix ©2024



