

Andrew Pearce  
Estate Agents

  
**Andrew Pearce**  
PINNER

FIELD END ROAD, RUISLIP HA4 0RF £587,500

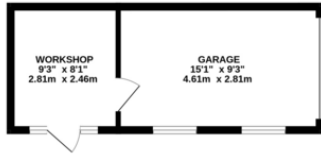




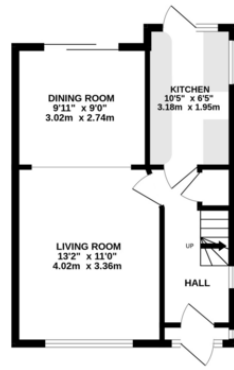
Development / Extension potential! A three bedroom semi detached family home position on a larger than average plot. Offered for sale with no upper chain .



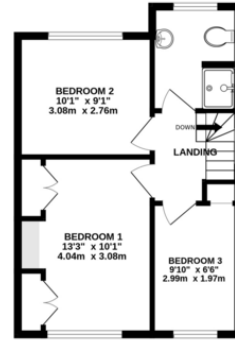
OUTBUILDING  
214 sq.ft. (19.9 sq.m.) approx.



GROUND FLOOR  
371 sq.ft. (34.5 sq.m.) approx.



1ST FLOOR  
382 sq.ft. (35.5 sq.m.) approx.



TOTAL FLOOR AREA : 968 sq.ft. (89.9 sq.m.) approx.

Whilst every attempt has been made to ensure the accuracy of the floorplan contained here, measurements of doors, windows, rooms and any other items are approximate and no responsibility is taken for any error, omission or mis-statement. This plan is for illustrative purposes only and should be used as such by any prospective purchaser. The services, systems and appliances shown have not been tested and no guarantee as to their operability or efficiency can be given.  
Made with Metropix ©2024





