



SOLIS HOUSE, 260 FIELD END ROAD, HA4 9BF

£315,000



An immaculately presented one bedroom first floor apartment located in a sought after modern development in the heart of Eastcote high street.

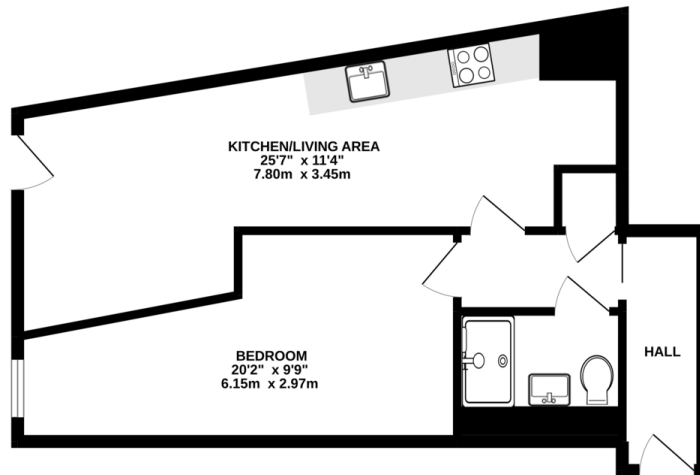
This property benefits from being one of the larger one beds within Solis House and boasts; fully fitted kitchen with washing machine, dishwasher, fridge/freezer, oven and hob, open plan living area, built in wardrobes, Juliet balcony and a long lease.

The property is only 0.1 miles away from Eastcote underground station which services both the Metropolitan and Piccadilly Lines.

- Modern Development
- Long Lease
- Immaculate condition
- Walking Distance to Eastcote Station
- Ideal for First Time buyer or Buy to Let Investors
- Integrated Appliances
- Offered chain free



1ST FLOOR
526 sq.ft. (48.9 sq.m.) approx.



TOTAL FLOOR AREA: 526 sq ft (48.9 sq m) approx.
While every attempt has been made to ensure the accuracy of the floorplan contained here, measurements of doors, windows, rooms and any other items are approximate and no responsibility is taken for any error, omission or mis-statement. This plan is for illustrative purposes only and should be used as such by any prospective purchaser. The services, systems and appliances shown have not been tested and no guarantee as to their operability or efficiency can be given.
Made with Metrepro ©2022



