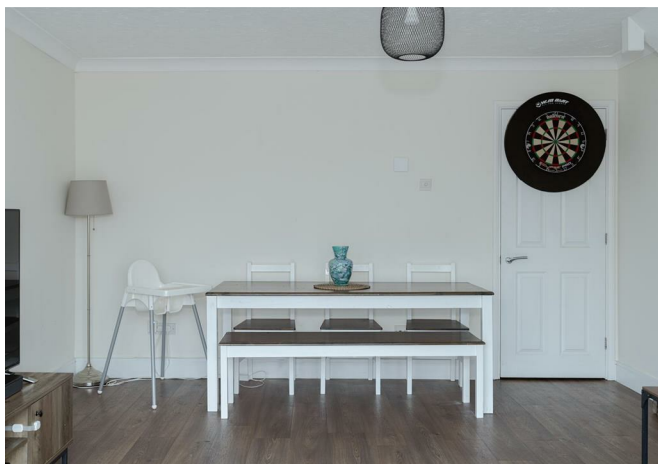




Oak End, Dorking
£425,000





“

A modern three-bedroom semi-detached home in a quiet Beare Green cul-de-sac, offering bright open-plan living, a landscaped garden, parking, garage access, and convenient proximity to local amenities, countryside, transport links, and future extension potential (STPP).

”



A beautifully presented three-bedroom semi-detached home set in a quiet, sought-after cul-de-sac close to Beare Green's amenities, transport links and surrounding countryside. The spacious entrance hall leads to a cloakroom, a modern kitchen with ample units and worktops, and an impressive open-plan living/dining/conservatory area filled with natural light. This central space includes under-stairs storage and opens directly onto the garden, making it ideal for everyday living and entertaining.

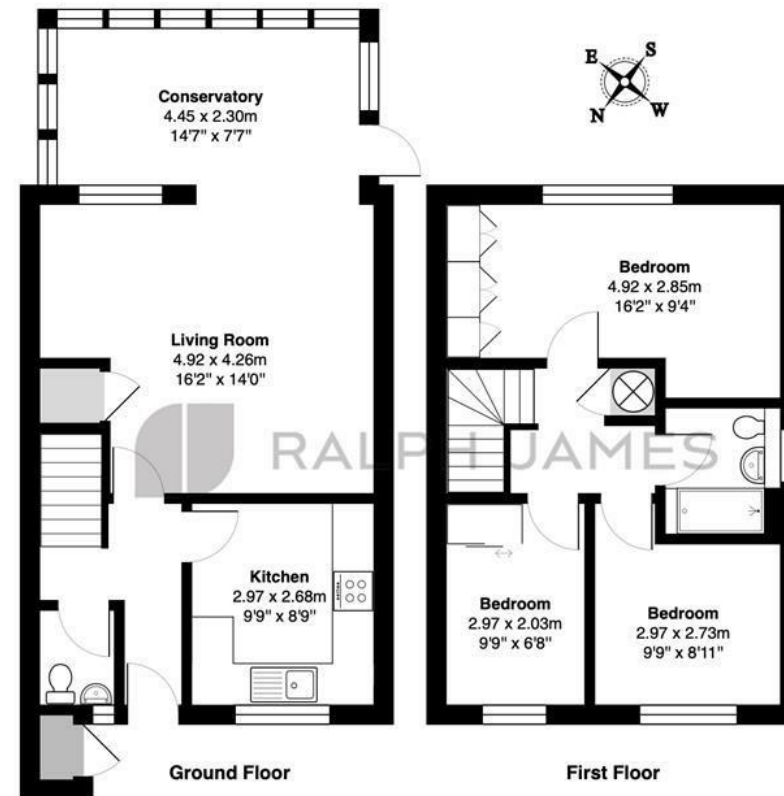
Upstairs, the master bedroom offers full-width built-in wardrobes, with a second double bedroom and a third single that can serve as a study. A newly fitted shower room features a large walk-in shower and contemporary suite. Additional benefits include gas central heating, double glazing and potential to extend (STPP), including loft possibilities.

Outside, the property features a pretty front garden, two allocated parking spaces, and garage access. The landscaped, low-maintenance rear garden provides a generous patio for outdoor dining, fenced for privacy with shrubs and well-stocked beds, plus a side access gate.

Beare Green offers shops, a café, school, recreation ground and village hall, with Dorking, Horsham, the A24, M25 and Gatwick all easily accessible. Holmwood station is within walking distance for London-bound rail links.

Need to know

- Three Bedrooms
- Two allocated parking spaces & garage
- A short walk to Holmwood Station
- Close by to village amenities & beautiful open countryside
- Potential to extend STPP
- South East facing rear garden



Oak End, Beare Green, Dorking

Total Area: 84.8 m² ... 913 ft²

FOR ILLUSTRATIVE PURPOSES ONLY.

Whilst every attempt has been made to ensure the accuracy of the floor plan shown, all measurements, positioning, fixtures, features, fittings and any other data shown are an approximate interpretation for illustrative purposes only and are not to scale.

No responsibility is taken for any error, omission, miss-statement or use of data shown.

The above statement applies to both 'Still Moving London LTD' and the Company or individual displaying this floor plan.

Unauthorised reproduction prohibited.

Â© Still Moving London LTD (www.stillmoving.london)



Interested?

dorking@ralphjames.co.uk
01306 284555

#

ralphjames.co.uk