



# Curtis Gardens, Dorking

£425,000







“

The location of Curtis Gardens is hard to beat! A stones throw from Dorking High Street and Dorking West station. The house itself is full of period charm and character!

”





This delightful Victorian terraced cottage offers a perfect blend of character and modern living. With two spacious double bedrooms, this home is ideal for couples, small families, or those seeking a peaceful retreat in a vibrant community.

As you enter, you are welcomed by two inviting reception rooms that provide ample space for relaxation and entertaining. The living room exudes warmth and charm, while the dining room offers a perfect setting for family meals or gatherings with friends. The well-appointed kitchen is conveniently located, making meal preparation a joy.

The property boasts a well-maintained bathroom, ensuring comfort and convenience for all residents. Outside, the charming courtyard garden provides a private outdoor space, perfect for enjoying a morning coffee or hosting summer barbecues.

Situated in a central location in Dorking, this cottage is just a stone's throw away from local amenities, shops, and transport links, making it an ideal choice for those who appreciate the convenience of urban living while still enjoying the tranquillity of a residential area.

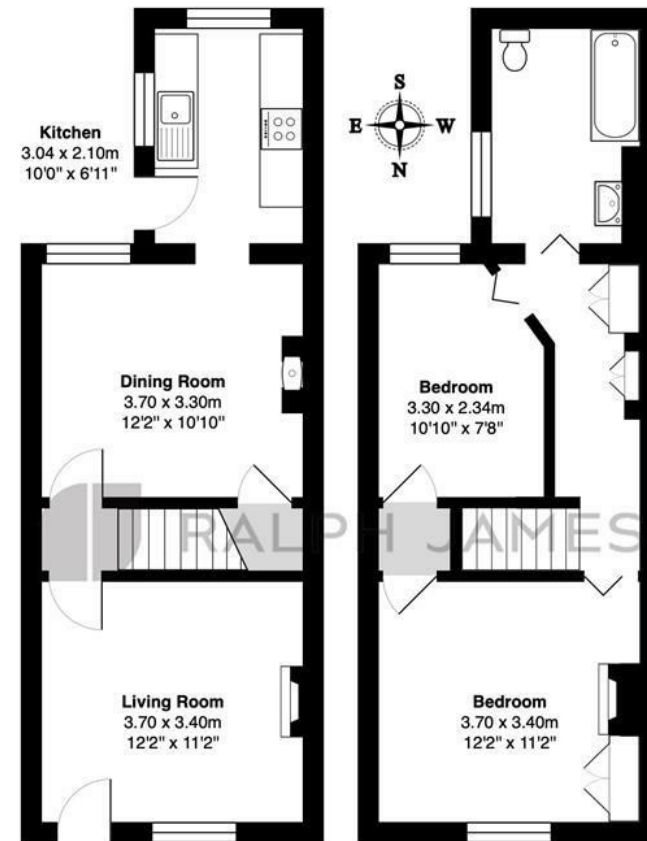
This Victorian terraced cottage is a rare find, combining period features with modern comforts in a sought-after location. Do not miss the opportunity to make this lovely home your own.





## Need to know

- Victorian Cottage full of period charm
- Central Dorking location close to High Street and transport links
- Two double bedrooms with ample storage
- Two reception rooms with feature fireplaces
- South facing Courtyard garden



Ground Floor

First Floor

Curtis Gardens, Dorking

Total Area: 67.9 m<sup>2</sup> ... 730 ft<sup>2</sup>

FOR ILLUSTRATIVE PURPOSES ONLY.

Whilst every attempt has been made to ensure the accuracy of the floor plan shown, all measurements, positioning, fixtures, features, fittings and any other data shown are an approximate interpretation for illustrative purposes only and are not to scale.

No responsibility is taken for any error, omission, miss-statement or use of data shown.

The above statement applies to both 'Still Moving London LTD' and the Company or individual displaying this floor plan.

Unauthorised reproduction prohibited.

Â© Still Moving London LTD (www.stillmoving.london)



## Interested?

dorking@ralphjames.co.uk  
01306 284555

#

ralphjames.co.uk