



Portsmouth Road, Woking

Offers In The Region Of £2,500,000





Welcome to The Kilns – A Remarkable Revival of Edwardian Grandeur.

Positioned in a peaceful area of Surrey, Ripley itself dates as far as back as Norman times, and still houses characterful period properties and Village amenities. The area has a number of short and long country walks within small woods, surrounded by farmland, as well as a popular monthly farmer's market with over 45 stalls.





Step into The Kilns, a magnificent Edwardian residence dating back to the 1900s, now reimagined for modern luxury living. Spanning an impressive 4,520 sq ft, this substantial home has been meticulously and sympathetically restored, marrying period elegance with contemporary refinement. From its awe-inspiring domed ceiling above the central stairwell to the thoughtfully preserved original features throughout, every corner of The Kilns tells a story of heritage, craftsmanship, and timeless style.

At the heart of the home lies a showstopping bespoke kitchen by Ashley Jay Kitchens. A substantial stone island with breakfast bar anchors the space, surrounded by classic shaker cabinetry in Portland Stone Deep 157, accented with antique brass hardware. Underfoot, luxurious Dijon Tumbled Limestone tiles by Mandarin Stone add texture and charm, while full-height cabinetry cleverly conceals access to a spacious walk-in pantry and separate utility room. A pitched ceiling and double doors create a sense of openness and bathe the room in natural light, seamlessly connecting the indoors to the landscaped outdoor space.

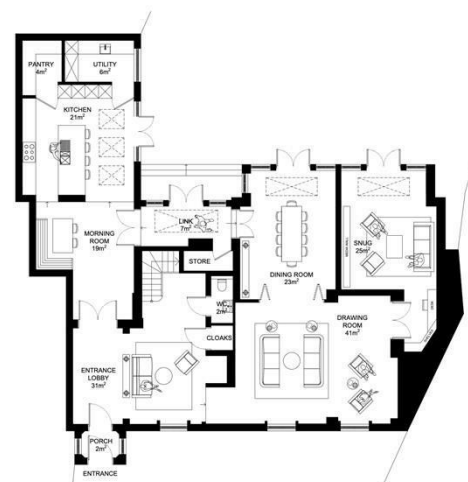
The generous entrance lobby sets the tone, with a welcoming seating area and access to a stylish W/C, the elegant morning room, and the spectacular drawing room – a grand, light-filled space of over 400 sq ft. Bi-fold doors extend the living space into a beautifully proportioned dining room with views across the garden, perfect for entertaining. For quieter moments, the snug/media room offers a cosy retreat with integrated storage and ambient charm.

Upstairs, the principal suite is a sanctuary of sophistication, featuring a spacious walk-in wardrobe and dressing area leading to a sumptuous en-suite bathroom. Here, luxurious Onyx tiling pairs with exquisite Lusso and Porter sanitary ware to create a spa-like escape, blending style and serenity. The Kilns is more than a house – it's a lifestyle.



Need to know

- The Kilns is a character period property on the edge of Ripley village.
- Extended in 2024 to create an executive family home, the rooms boast huge spaces and benefit from interior design throughout.
- Each room boasts opulence and splendour, with mixed textures, rich tones and considered lighting.
- Brand new lighting throughout the property, with stylish designs from Corston and Pooky.
- Luxury flooring includes Country Life & Style Carpets in Rye and a mixture of Ted Todd plank and herringbone.
- The property is a couple of miles away from St Peter's Catholic School (in the top 3% of secondary schools nationwide).
- 1.6 miles to Clandon train station and a 15 minute walk from Ripley's Village shops.
- A gated entrance and long shared driveway leads to private parking for at least 3 cars.
- Under a 15 minute drive to the A3, which provides access to London, Guildford and the coast.



GROUND FLOOR: 217m²



SECOND FLOOR: 36m²



FIRST FLOOR: 167m²



Interested?

01306 284555
info@ralphjames.co.uk

ralphjames.co.uk