



Ansell Road, Dorking
£550,000





A stylishly modernised two-bedroom period home with a versatile loft room and southwest-facing garden, ideally located near Dorking High Street, offering elegant interiors, open-plan living, and excellent access to local amenities and schools.





A beautifully presented two-bedroom home with a versatile loft room, combining period charm with stylish modern interiors and a sunny southwest-facing garden. Ideally located on a sought-after road just moments from Dorking High Street, Meadowbank Park, mainline stations, and excellent local schools and nurseries.

The property opens to a bright, spacious entrance hall, reflecting its meticulous design and attention to detail. At the front, the sitting room features a bay window and an open fireplace, creating a cosy yet elegant atmosphere. To the rear, an open-plan kitchen/dining area is perfect for modern living and entertaining, complete with contemporary fitted units, Quartz worktops with a breakfast bar, integrated appliances, and a walk-in pantry. Skylights and French doors flood the space with natural light, enhancing the seamless connection to the outdoors. Solid oak flooring and a neutral palette add warmth and practicality. A cloakroom with laundry cupboard completes the ground floor.

Upstairs, the main bedroom includes built-in storage and a walk-in shower. The second bedroom, currently a single, features fitted storage, an air conditioning unit, and lovely rear views. A recently updated bathroom offers a modern white suite with bath and overhead shower.

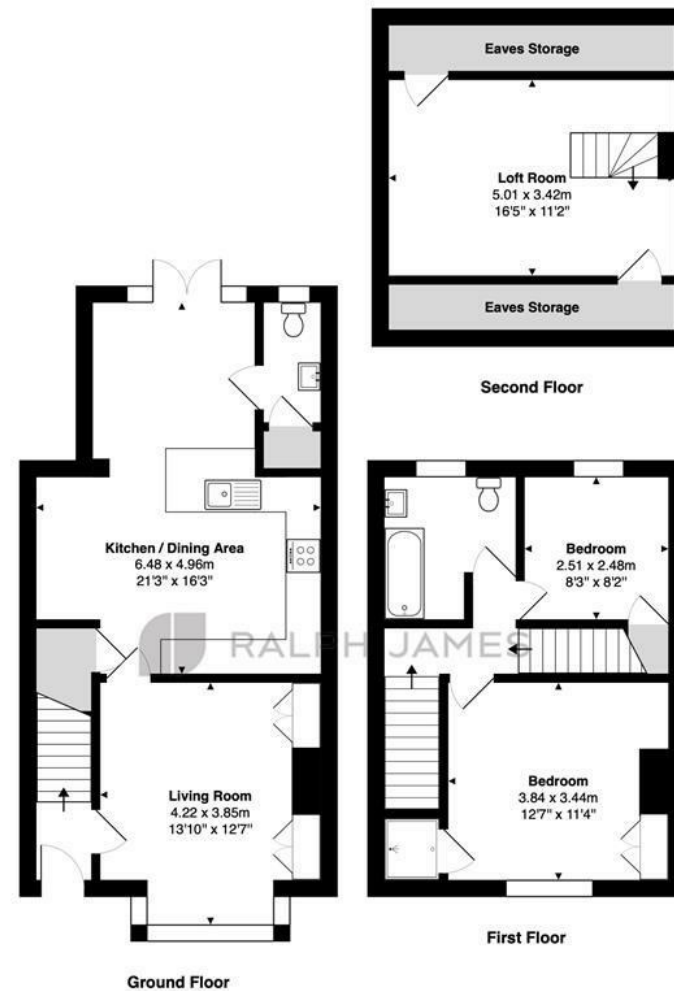
A staircase leads to a spacious second-floor loft room, measuring approximately 16 feet, with eaves storage, Velux window, and air conditioning—offering potential to convert into a third bedroom (STPP).

Outside, the front is neatly gravelled with low hedging. The rear garden enjoys a sunny southwest aspect and is laid with Astro turf for low maintenance, creating a private retreat. A rear access gate adds practicality.



Need to know

- Beautifully presented throughout
- Close to Meadowbank Park and Dorking High Street
- Period features
- South West facing rear garden
- 1187 Sq Ft of accommodation
- Two bedrooms plus a bonus loft room
- Walking distance to Shops, Schools, Nurseries and Train Stations



Interested?

dorking@ralphjames.co.uk
01306 284555

#

ralphjames.co.uk

Ansell Road, Dorking

Total Area: 110.3 m² ... 1187 ft²

FOR ILLUSTRATIVE PURPOSES ONLY.

Whilst every attempt has been made to ensure the accuracy of the floor plan shown, all measurements, positioning, fixtures, features, fittings and any other data shown are an approximate interpretation for illustrative purposes only and are not to scale.

No responsibility is taken for any error, omission, miss-statement or use of data shown.

The above statement applies to both 'Still Moving London LTD' and the Company or individual displaying this floor plan.

Unauthorised reproduction prohibited.

Â© Still Moving London LTD (www.stillmoving.london)

 RALPH JAMES