



Hammerfield Drive, Dorking

£1,400 Per Month





“

This serene, beautifully finished annex in Abinger Hammer is ideal for a single professional or couple, offering privacy, stylish interiors, parking with EV charging, and a private garden space—all with efficient heating and immediate availability, fully furnished.

”



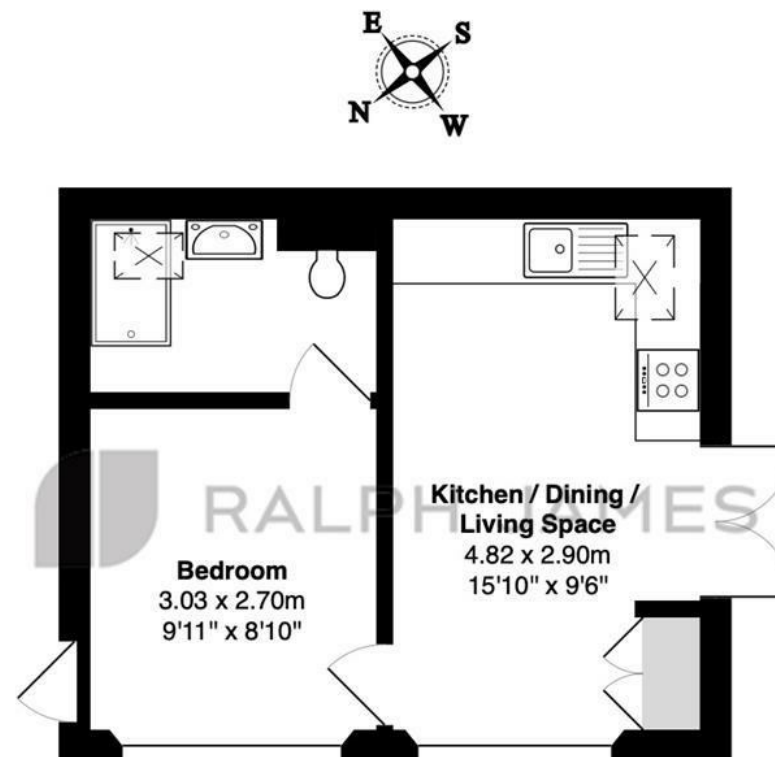
Accessed via its own front door and set apart with allocated parking and an EV charging point, this recently developed home is pristine throughout. Thoughtfully designed with efficiency in mind, it benefits from an air source heat pump, ensuring comfort all year round.

Inside, incredible natural light pours in through charming arched windows, enhancing the calm, airy atmosphere. The interiors are furnished and ready to move into, with high-quality finishes and a clean, modern aesthetic throughout.

The property also enjoys its own dedicated section of garden—ideal for morning coffee, reading, or relaxing in the peaceful surroundings.

Need to know

- Secluded annex in tranquil Abinger Hammer setting
- Ideal for a single professional or couple
- Private entrance with allocated parking and EV charging
- Recently developed and presented in pristine condition
- Furnished and available for immediate move-in
- Beautiful arched windows provide exceptional natural light
- Air source heat pump for efficient, eco-friendly heating
- Private section of garden perfect for relaxing outdoors
- EPC: B
- Council Tax: Included



Little Meadow Annex, Hammerfield Drive, Abinger Hammer

Total Area: 27.7 m² ... 299 ft²

FOR ILLUSTRATIVE PURPOSES ONLY.

Whilst every attempt has been made to ensure the accuracy of the floor plan shown, all measurements, positioning, fixtures, features, fittings and any other data shown are an approximate interpretation for illustrative purposes only and are not to scale.

No responsibility is taken for any error, omission, miss-statement or use of data shown.

The above statement applies to both 'Still Moving London LTD' and the Company or individual displaying this floor plan.

Unauthorised reproduction prohibited.

Â© Still Moving London LTD (www.stillmoving.london)

Interested?

dorking@ralphjames.co.uk
01306 284555

#

ralphjames.co.uk

