



Hampstead Road, Dorking
£399,950





“

”



Situated on Hampstead Road in Dorking, this delightful house offers a perfect blend of character and modern living. Built in 1899, the property has been thoughtfully refurbished throughout, ensuring a fresh and inviting atmosphere for its new occupants.

Spanning an impressive 667 square feet, the home features two spacious reception rooms, ideal for both relaxation and entertaining. The newly fitted kitchen is a highlight, providing a contemporary space for culinary enthusiasts to create and enjoy meals. The property boasts two well-proportioned bedrooms, offering comfortable retreats for rest and relaxation.

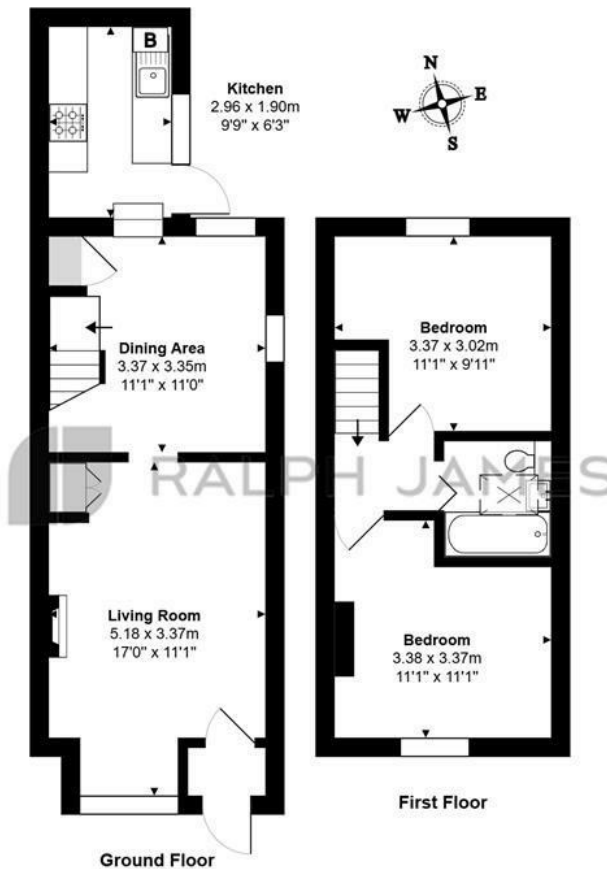
The bathroom has also been completely updated, showcasing modern fixtures and finishes that enhance the overall appeal of the home.

With its prime location in Dorking, residents will benefit from easy access to local amenities, including shops, cafes, and parks, making it an ideal choice for those seeking a vibrant community atmosphere. This property presents a wonderful opportunity for anyone looking to embrace a charming home with modern conveniences in a picturesque setting.



Need to know

- Refurbished throughout
- Newly fitted kitchen, sleek design
- Contemporary bathroom, stylish finish
- Two cosy reception rooms
- Two comfortable bedrooms
- Charming period house
- Located on Hampstead Road
- Close to Dorking amenities
- Built in 1899, historic appeal



Hampstead Road, Dorking

Total Area: 61.3 m² ... 660 ft²

FOR ILLUSTRATIVE PURPOSES ONLY.

All measurements are approximate and for display purposes only

Whilst every attempt has been made to ensure the accuracy of the floor plan shown, all measurements, positioning, fixtures, features, fittings and any other data shown are an approximate interpretation for illustrative purposes only and are not to scale.

No responsibility is taken for any error, omission, miss-statement or use of data shown.

The above statement applies to both 'Still Moving London LTD' and the Company or individual displaying this floor plan.

Unauthorised reproduction prohibited.

© Still Moving London LTD (www.stillmoving.london)



Interested?

dorking@ralphjames.co.uk
01306 284555

#

ralphjames.co.uk