



Horsham Road, Dorking

£400,000







This stylish two-bedroom ground floor maisonette in Dorking features spacious living areas, a modern kitchen, private garden, and off-street parking, offering a comfortable and well-appointed home ideal for couples or small families.





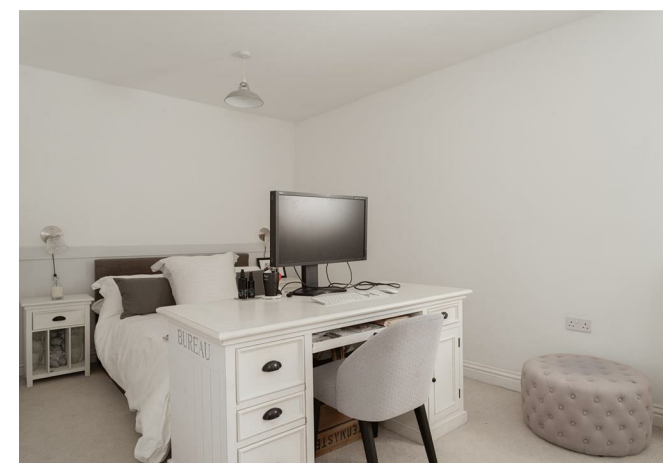


This beautifully presented ground floor maisonette offers a delightful living experience. With two spacious double bedrooms, this apartment is perfect for couples, small families, or those seeking a comfortable retreat.

As you enter, you are welcomed into a bright and airy reception room that sets the tone for the rest of the home. The large kitchen, featuring a central island, is a standout feature, providing ample space for cooking and entertaining. This well-designed area is ideal for those who enjoy culinary pursuits or simply wish to gather with friends and family. The bathroom is well-appointed, complementing the overall appeal of the property. With its thoughtful layout and modern finishes, this apartment is ready for you to move in and make it your own.

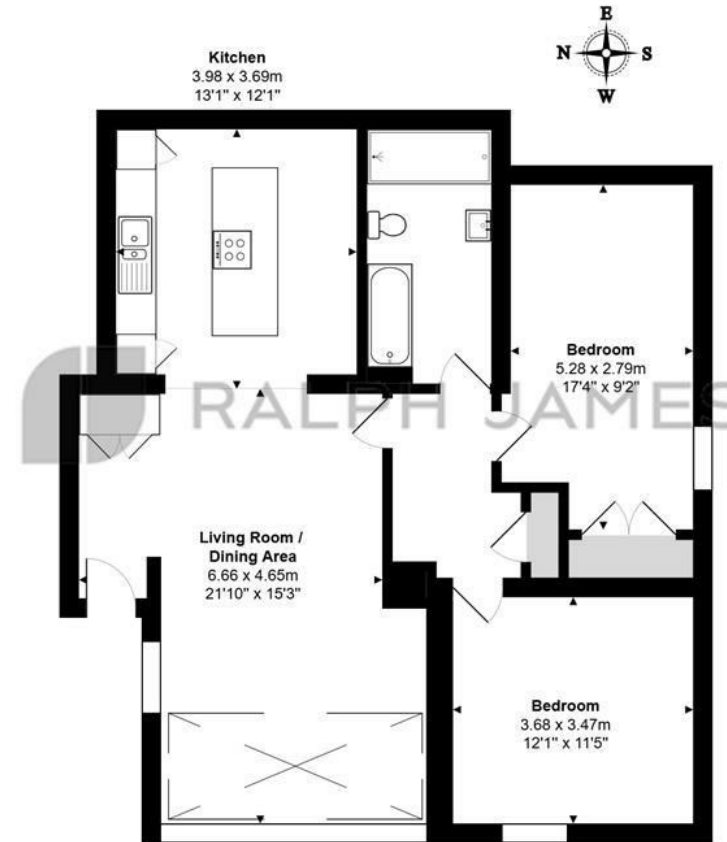
One of the highlights of this property is the private garden, which offers a serene outdoor space for relaxation or al fresco dining. It is a perfect spot to unwind after a long day or to enjoy a sunny afternoon. Additionally, the maisonette benefits from off-street parking for one vehicle, ensuring convenience for residents and guests alike.

In summary, this two-bedroom ground floor maisonette is a rare find in Dorking, combining comfort, style, and practicality.



## Need to know

- Large ground floor apartment
- Generous private courtyard garden
- Two double bedrooms
- Beautifully present throughout
- Off-street parking
- Luxurious kitchen with central island
- No onward chain



### Ground Floor

Horsham Road, Dorking  
Total Area: 90.9 m<sup>2</sup> ... 979 ft<sup>2</sup>

FOR ILLUSTRATIVE PURPOSES ONLY.  
All measurements are approximate and for display purposes only

Whilst every attempt has been made to ensure the accuracy of the floor plan shown, all measurements, positioning, fixtures, features, fittings and any other data shown are an approximate interpretation for illustrative purposes only and are not to scale.

No responsibility is taken for any error, omission, miss-statement or use of data shown.

The above statement applies to both 'Still Moving London LTD' and the Company or individual displaying this floor plan.

Unauthorised reproduction prohibited.

© Still Moving London LTD (www.stillmoving.london)



## Interested?

dorking@ralphjames.co.uk  
01306 284555

#

ralphjames.co.uk