

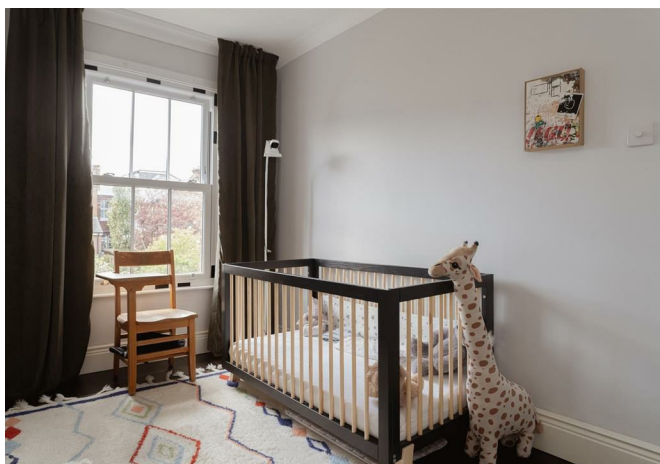


# Jubilee Terrace, Dorking

£500,000







This beautifully presented Victorian mid-terrace home in central Dorking is a rare find, offering spacious living, a tranquil private garden, and the perfect mix of character and convenience—all with the added benefit of no onward chain.







This charming Victorian mid-terrace house, set in the heart of Dorking, offers a delightful blend of character and modern living. With three well-proportioned bedrooms, this property is perfect for families or those seeking extra space. The inviting reception room provides a warm and welcoming atmosphere, ideal for both relaxation and entertaining.

The house boasts a convenient central location, allowing easy access to the vibrant amenities of Dorking, including shops, cafes, and restaurants. For those who enjoy the outdoors, the nearby Meadowbank Park offers a lovely green space for leisurely strolls or family picnics.

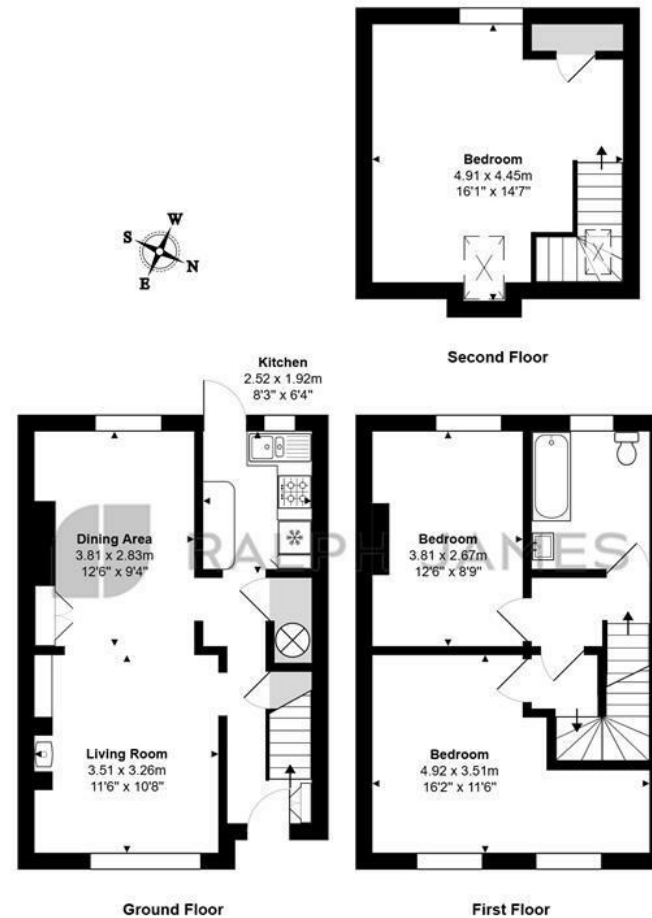
One of the standout features of this property is the private rear garden, providing a tranquil retreat from the hustle and bustle of daily life. It is an excellent space for gardening enthusiasts or for simply enjoying the fresh air.

Additionally, the property is offered with no onward chain, making the buying process straightforward and hassle-free. This is a wonderful opportunity to acquire a lovely home in a sought-after area, combining the charm of Victorian architecture with the convenience of modern living.



## Need to know

- Charming Victorian mid-terrace home
- Three well-proportioned bedrooms
- Inviting reception room with log burner
- Prime central location close to town centre
- Private rear garden
- No onward chain
- Residents permit parking
- Close to Meadowbank Park



## Interested?

dorking@ralphjames.co.uk  
01306 284555

#

ralphjames.co.uk

Jubilee Terrace, Dorking  
Total Area: 93.4 m<sup>2</sup> ... 1006 ft<sup>2</sup>  
FOR ILLUSTRATIVE PURPOSES ONLY.  
All measurements are approximate and for display purposes only.

Whilst every attempt has been made to ensure the accuracy of the floor plan shown, all measurements, positioning, fixtures, features, fittings and any other data shown are an approximate interpretation for illustrative purposes only and are not to scale.

No responsibility is taken for any error, omission, miss-statement or use of data shown.

The above statement applies to both 'Still Moving London LTD' and the Company or individual displaying this floor plan.

Unauthorised reproduction prohibited.

© Still Moving London LTD (www.stillmoving.london)

 RALPH JAMES