



Chalkpit Lane, Dorking  
£350,000



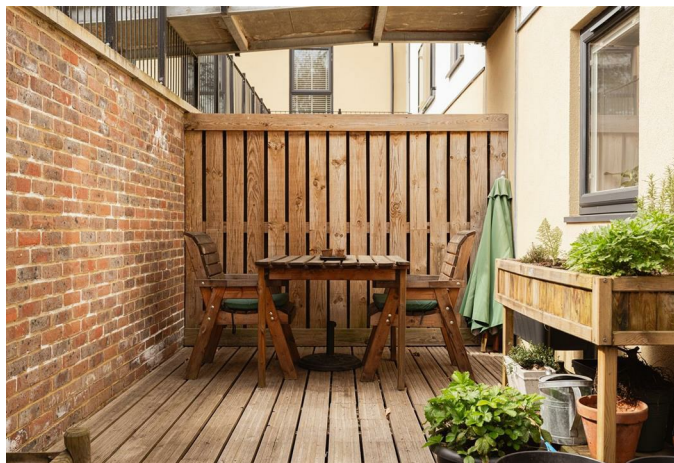


“

A beautifully presented modern ground floor apartment offering spacious and stylish living, featuring two private terraces perfect for relaxing or entertaining, convenient allocated parking, and an enviable location just a short stroll from the vibrant town centre with its array of shops, cafés, and amenities.

”





Nestled in the charming area of Chalkpit Lane, Dorking, this modern two-bedroom apartment offers a delightful blend of comfort and convenience. Upon entering, you are greeted by a spacious open-plan kitchen and living area, perfect for both relaxation and entertaining. The design maximises natural light, creating a warm and inviting atmosphere throughout.

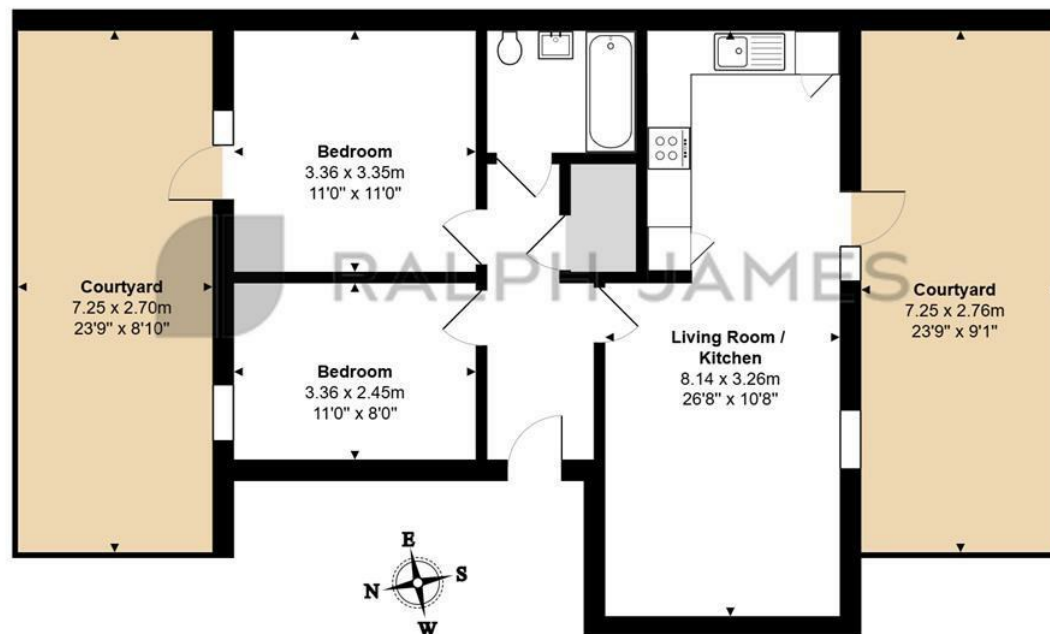
The apartment features two well-proportioned bedrooms, with the main bedroom boasting its own private terrace, ideal for enjoying morning coffee or evening sunsets. Additionally, a separate terrace off the living room provides further outdoor space, enhancing the overall appeal of this lovely home.

Situated close to local amenities, residents will find shops, cafes, and parks within easy reach, making daily life both convenient and enjoyable. This property is perfect for those seeking a modern lifestyle in a vibrant community. Whether you are a first-time buyer or looking to downsize, this apartment presents an excellent opportunity to embrace comfortable living in Dorking.



## Need to know

- Ground Floor apartment
- Beautifully presented throughout
- One allocated parking space
- Two private terraces
- Close to Meadowbank and town centre
- Close to mainline stations



### Lower Ground Floor

Leith Hill Apartments, Chalkpit Lane, Dorking

Total Area: 57.2 m<sup>2</sup> ... 616 ft<sup>2</sup> (excluding courtyard)

FOR ILLUSTRATIVE PURPOSES ONLY.

All measurements are approximate and for display purposes only

Whilst every attempt has been made to ensure the accuracy of the floor plan shown, all measurements, positioning, fixtures, features, fittings and any other data shown are an approximate interpretation for illustrative purposes only and are not to scale.

No responsibility is taken for any error, omission, miss-statement or use of data shown.

The above statement applies to both 'Still Moving London LTD' and the Company or individual displaying this floor plan.

Unauthorised reproduction prohibited.

© Still Moving London LTD (www.stillmoving.london)



## Interested?

dorking@ralphjames.co.uk  
01306 284555

#

ralphjames.co.uk