



Denbies Drive, Dorking

£4,000 Per Month





“

A wonderfully positioned detached property on the grounds of an award-winning Wine Estate...your garden leads onto the vineyard. It really is something special and something to witness firsthand!

”



Ralph James Dorking is proud to present a wonderfully period home full of character overlooking Denbies Vineyard. This unique property offers exceptional rural views within walking distance of Dorking town center. The house provides versatile accommodation over two floors.

The accommodation begins in the dining room with bay window and wood fired stove. The tiled kitchen offers an array of integrated appliances and floor to ceiling units. The family room boasts a large log burner with an abundance of natural light flowing through. Downstairs offers a double bedroom, family bathroom and additional bedroom/office.

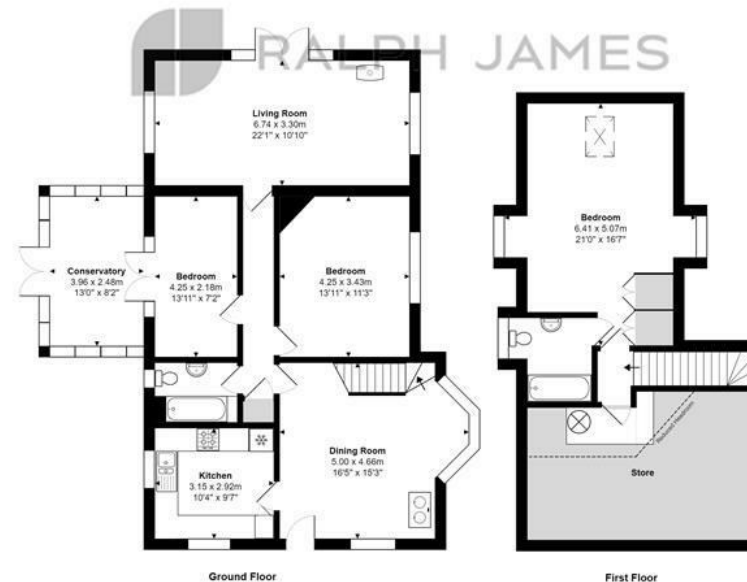
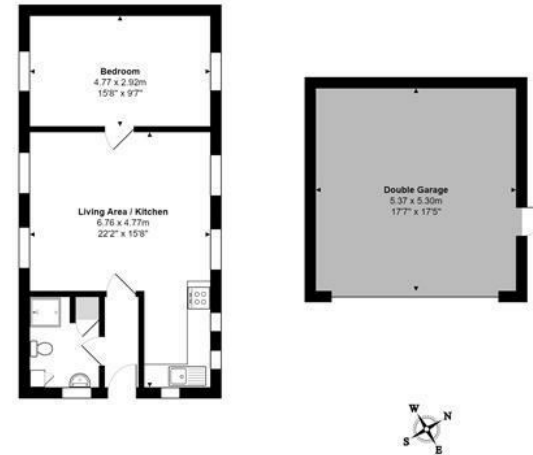
Upstairs you will find the principal bedroom, en-suite and built-in wardrobes where you can enjoy breath-taking views of the vines and North Downs. The eave space has been fully boarded and offers a substantial amount of space.

The garden is a wonderful space offering panoramic views and an abundance of entertaining areas, with separate woodland providing a haven of tranquility and wildlife. The generously proportioned self-contained annex allows for impressive guest accommodation or office/studio space.



Need to know

- Private gated driveway with ample private parking
- Chalet bungalow - Three bedrooms and two bathrooms
- Additional detached annex - One bedroom with stunning views
- Views and outlook towards the vineyard
- Gardens and land sits on approximately one acre
- Gated access onto Denbies
- Detached double garage
- All bills included
- EPC: D
- Council Tax: Included in rent



Ground Floor

First Floor

Denbies Lodge, Dorking

Total Area: 234.0 m² ... 2519 ft²

Total Area: 158.6 m² ... 1707 ft² (excluding annex and double garage)

Annex Total Area: 48.3 m² ... 520 ft²

FOR ILLUSTRATIVE PURPOSES ONLY

Whilst every attempt has been made to ensure the accuracy of the floor plan shown, all measurements, positioning, fixtures, features, fittings and any other data shown are an approximate interpretation for illustrative purposes only and are not to scale.

No responsibility is taken for any error, omission, mis-statement or use of data shown.

The above statement applies to both 'Stil Moving London LTD' and the Company or individual displaying this floor plan.

Unauthorised reproduction prohibited.

AO Stil Moving London LTD (www.stilmoving.london)

RALPH JAMES

Interested?

dorking@ralphjames.co.uk
01306 284555

#

ralphjames.co.uk