



South Terrace, Dorking

£350,000





“

A two double bedroom first floor maisonette located just a short distance from Dorking town centre, offering someone the opportunity to put their own stamp on their new home, whilst also boasting a large private garden.

”



Nestled in the charming area of South Terrace, Dorking, this delightful first-floor maisonette presents an excellent opportunity for those seeking a home with potential. Boasting two generously sized double bedrooms, this property is perfect for couples, small families, or individuals looking for extra space.

The maisonette features a welcoming reception room, ideal for relaxation or entertaining guests. One bathroom provides essential convenience, while the large private garden offers a wonderful outdoor space for gardening enthusiasts or those who simply enjoy the fresh air. Additionally, the property includes a garage, providing secure parking and extra storage options.

Although the maisonette is in need of modernisation, this presents a unique chance for buyers to personalise the space to their taste and style. With no onward chain, the process of moving in can be swift and straightforward.

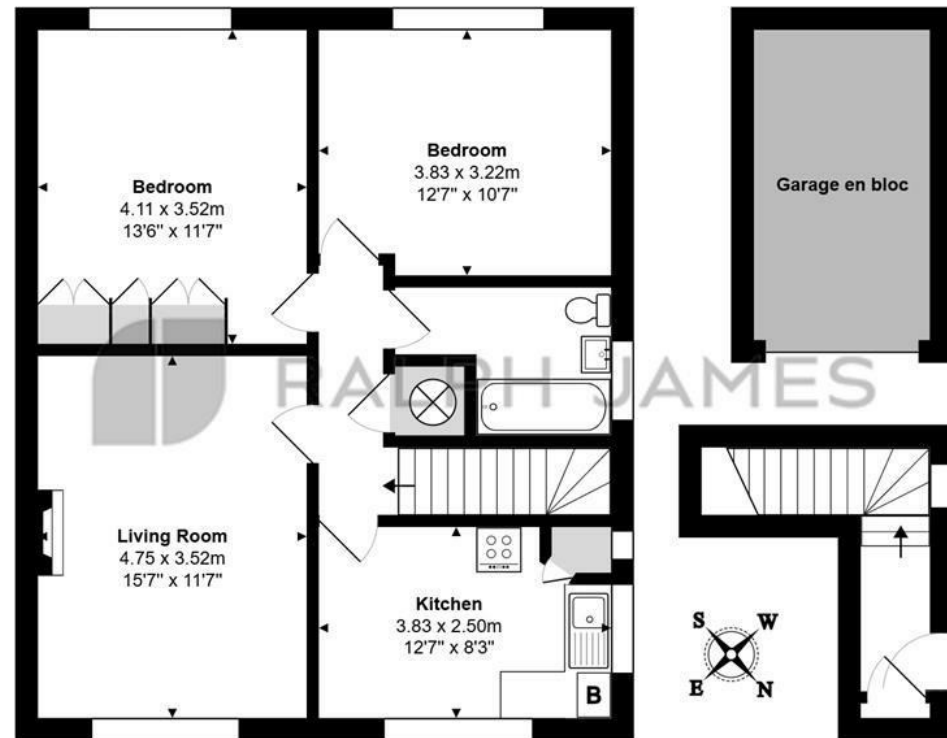
Situated just a short walk from Dorking town centre, residents will benefit from easy access to a variety of shops, cafes, and local amenities. The picturesque surroundings and vibrant community make this location particularly appealing.

In summary, this two-bedroom maisonette on South Terrace is a promising property that combines space, potential, and a prime location. Whether you are looking to invest or create your dream home, this maisonette is well worth considering.



Need to know

- First floor maisonette.
- Two double bedrooms.
- In need of modernisation.
- Spacious lounge / dining room.
- Separate kitchen.
- Garage en bloc.
- South westerly facing private garden.
- Short walk to Dorking town centres.
- Within easy reach of Dorking stations.
- Share of freehold.



First Floor

South Terrace, Dorking

Total Area: 72.8 m² ... 783 ft² (excluding garage en bloc)

FOR ILLUSTRATIVE PURPOSES ONLY.

Whilst every attempt has been made to ensure the accuracy of the floor plan shown, all measurements, positioning, fixtures, features, fittings and any other data shown are an approximate interpretation for illustrative purposes only and are not to scale.

No responsibility is taken for any error, omission, miss-statement or use of data shown.

The above statement applies to both 'Still Moving London LTD' and the Company or individual displaying this floor plan.

Unauthorised reproduction prohibited.

Â© Still Moving London LTD (www.stillmoving.london)



Interested?

dorking@ralphjames.co.uk
01306 284555

#

ralphjames.co.uk