



Chart Lane South, Dorking

£500,000





A rare opportunity to acquire a beautifully presented three bedroom mews home located in a private yet convenient position for local schools and Dorking town centre.





Welcome to this charming modern mews home located on a private road off of Chart Lane South in Dorking. This delightful property boasts two reception rooms, perfect for entertaining guests or simply relaxing with your loved ones. With three cosy bedrooms and two bathrooms, there is ample space for the whole family to enjoy.

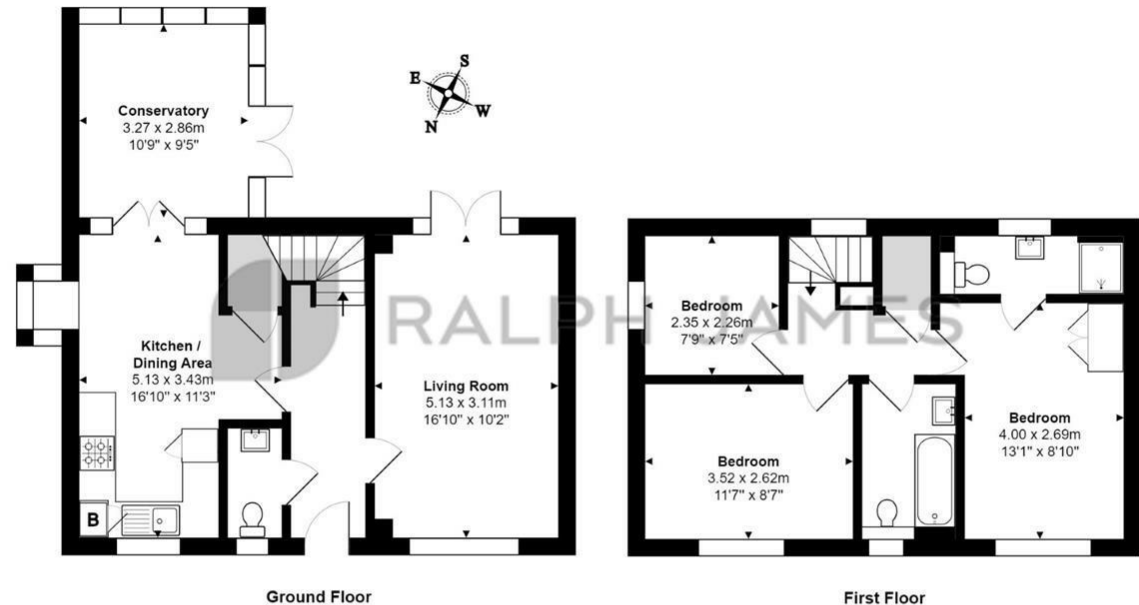
Situated on a private road of just five homes, this property offers a sense of exclusivity and tranquillity. The two allocated parking spaces ensure convenience for you and your visitors, making coming home a breeze.

Chart Lane South is known for its excellent school catchment, making this home ideal for families with children. Imagine the ease of dropping off and picking up your little ones from top-rated schools just a stone's throw away.



Need to know

- Modern semi detached home.
- Open plan kitchen / dining room.
- Separate double aspect lounge.
- Useful conservatory / dining space.
- Three well proportioned bedrooms.
- En-suite to primary bedroom.
- Two allocated parking spaces.
- Short distance to Dorking town centre and stations.
- Excellent school catchment.
- Freehold



Quartz Mews, Chart Lane South, Dorking

Total Area: 94.1 m² ... 1013 ft²

FOR ILLUSTRATIVE PURPOSES ONLY.

Whilst every attempt has been made to ensure the accuracy of the floor plan shown, all measurements, positioning, fixtures, features, fittings and any other data shown are an approximate interpretation for illustrative purposes only and are not to scale.

No responsibility is taken for any error, omission, miss-statement or use of data shown.

The above statement applies to both 'Still Moving London LTD' and the Company or individual displaying this floor plan.

Unauthorised reproduction prohibited.

Â© Still Moving London LTD (www.stillmoving.london)

Interested?

dorking@ralphjames.co.uk
01306 284555
ralphjames.co.uk

