



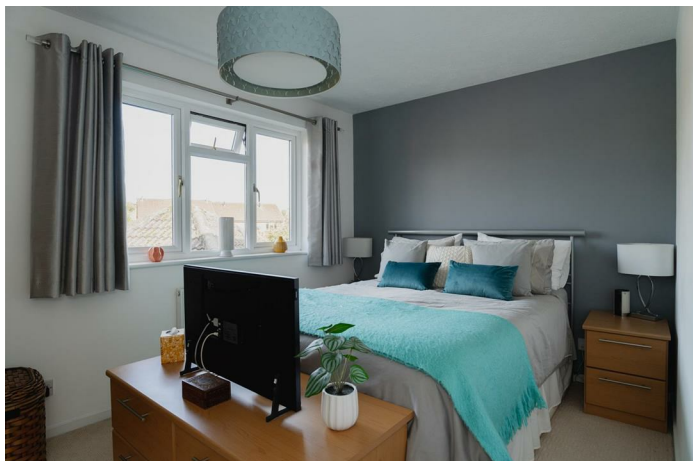
Dukes Ride, Dorking
£500,000





A beautifully presented three bedroom semi detached home located in a envious position within easy reach of Dorking town centre and station.





Welcome to this charming three bedroom semi-detached house located on Dukes Ride in the picturesque village of North Holmwood, Dorking. This property is a rare find as it is the first time on the market in over 20 years, and will make a wonderful home for a variety of people.

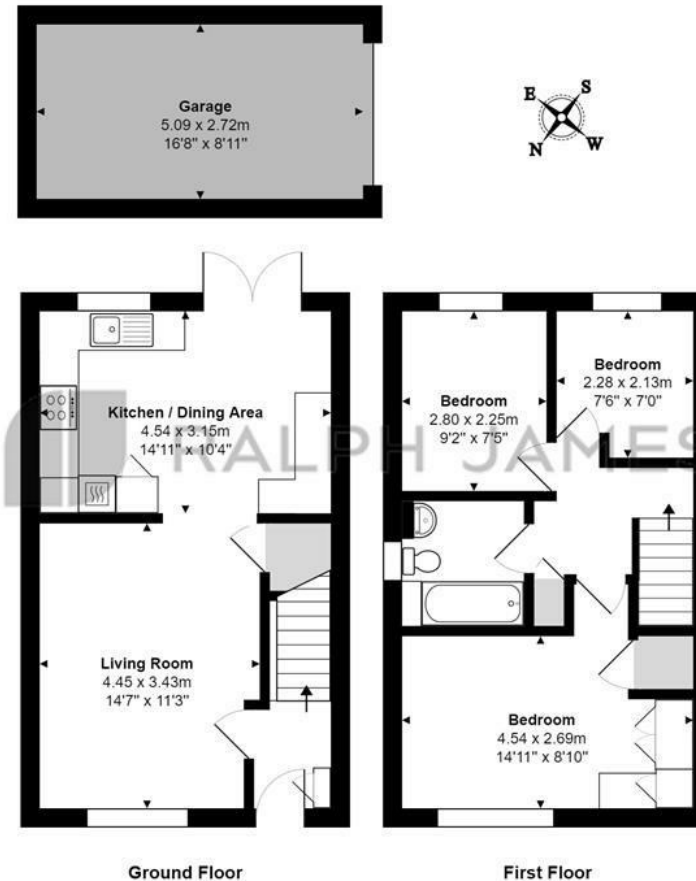
As you step inside, you will be greeted by an immaculately presented interior that has been lovingly maintained over the years. The house boasts three cosy bedrooms, perfect for a growing family or those in need of extra space for a home office or guest room.

One of the standout features of this property is its convenient yet secluded location. Nestled in a tranquil setting, you can enjoy peace and privacy while still being within easy reach of local amenities and transport links.

For those with a car, the property comes with a garage and allocated parking, providing ample space for your vehicles and storage needs.

Need to know

- Beautifully presented semi detached home.
- Three well proportioned bedrooms.
- Cleverly designed kitchen / breakfast room.
- Modern family bathroom.
- Detached garage and allocated parking.
- Southerly facing garden.
- Cul-de-sac location.
- Close to open green space for lovely countryside walks.
- Conveniently positioned for local amenities and station.
- Freehold.



Ground Floor

First Floor

Dukes Ride, North Holmwood

Total Area: 70.5 m² ... 759 ft² (excluding garage)

FOR ILLUSTRATIVE PURPOSES ONLY.

Whilst every attempt has been made to ensure the accuracy of the floor plan shown, all measurements, positioning, fixtures, features, fittings and any other data shown are an approximate interpretation for illustrative purposes only and are not to scale.

No responsibility is taken for any error, omission, miss-statement or use of data shown.

The above statement applies to both 'Still Moving London LTD' and the Company or individual displaying this floor plan.

Unauthorised reproduction prohibited.

Â© Still Moving London LTD (www.stillmoving.london)

Interested?

dorking@ralphjames.co.uk
01306 284555

#

ralphjames.co.uk

