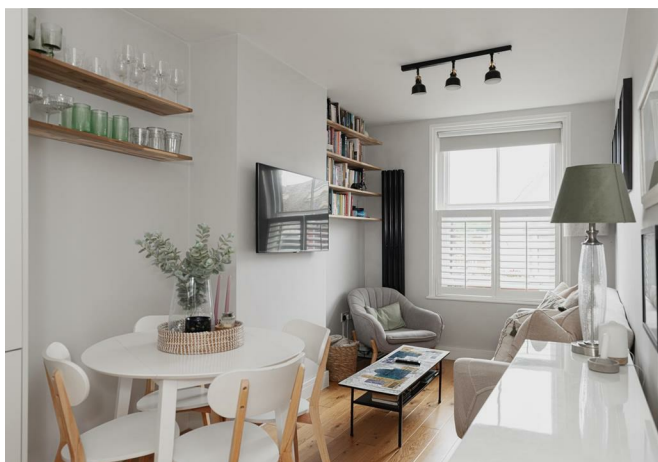




Paper Mews, Dorking  
£215,000





A beautifully presented first floor apartment located at the heart of the vibrancy of Dorking town, creating an ideal opportunity for first time buyers and young professionals, within easy reach of the mainline station.







Located in the heart of the ever popular town of Dorking, just moments from the mainline station, sits this beautifully presented first floor modern apartment.

Built just four years ago, this wonderful home offers an ideal example of open plan living, ideal for first time buyers or professionals looking for an easy commute to London.

Along with the modern living, this tremendous home boasts a spacious double bedroom, integral kitchen with a tasteful finish, along with an unusually spacious bathroom and entrance hallway.

The entrance to this popular development is right at the centre of the town, yet peacefully tucked away behind the high street, and is one not to be missed.



## Need to know

- Beautifully presented apartment.
- First floor.
- Located at the heart of the Dorking town centre.
- Perfect example of open plan living / dining.
- One double bedroom.
- Spacious bathroom.
- Secluded and private entrance.
- Short distance from Dorking mainline train station.
- Only 4 years old.
- Leasehold.



### First Floor Flat

Paper Mews, Dorking

Total Area: 41.0 m<sup>2</sup> ... 442 ft<sup>2</sup>

FOR ILLUSTRATIVE PURPOSES ONLY.



Whilst every attempt has been made to ensure the accuracy of the floor plan shown, all measurements, positioning, fixtures, features, fittings and any other data shown are an approximate interpretation for illustrative purposes only and are not to scale.

No responsibility is taken for any error, omission, miss-statement or use of data shown.

The above statement applies to both 'Still Moving London LTD' and the Company or individual displaying this floor plan.

Unauthorised reproduction prohibited.

© Still Moving London LTD (www.stillmoving.london)



## Interested?

dorking@ralphjames.co.uk  
01306 284555

ralphjames.co.uk