



Guildford Road, Westcott

£3,250 Per Month





This impressive four-bedroom detached period home offers spacious living on Guildford Road, perfectly positioned between Dorking and Westcott Village. Featuring an open-plan layout, modern kitchen, private garden, and versatile top-floor space, it's ideal for comfortable, flexible living.





Ralph James is thrilled to introduce this impressive four-bedroom detached period home to the Dorking/Wescott lettings market.

Located on Guildford Road, this property offers an ideal balance between the bustling town of Dorking, with its excellent transport links and vibrant high street, and the peaceful charm of Westcott village. The house is set back from the road, providing privacy with large electric gates and a driveway leading to the garage and front garden.

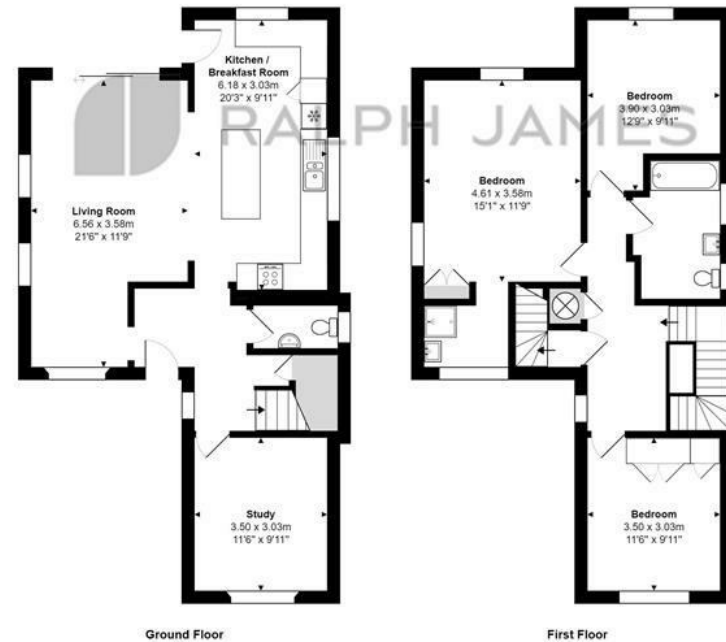
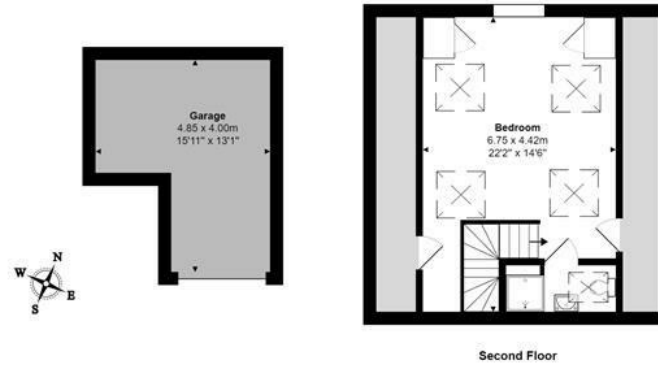
Inside, the ground floor features beautiful wooden flooring throughout, flowing seamlessly from the hallway into the study, dining area, W/C and the open-plan living and kitchen spaces. The spacious living area includes sliding doors that open to a private, walled rear garden, perfect for outdoor furniture and even a hot tub. The modern kitchen boasts a large island and comes equipped with ample white goods accompanied by clever storage.

Upstairs, you'll find three generously sized double bedrooms, two with built-in storage, along with a family bathroom and an en-suite. The top floor offers a versatile space that can serve as a fourth bedroom, play area, or additional office, with plenty of eaves storage.

The property will be repainted, and new carpets will be installed in certain areas, offering a fresh, updated look for new occupants.

Need to know

- Impressive four-bedroom detached period home
- Located on Guildford Road between Dorking and Westcott
- Set back from the road with private electric gates and driveway
- Open-plan layout with wooden flooring throughout
- Spacious modern kitchen with large island
- Private walled rear garden, ideal for outdoor furniture
- Three double bedrooms, one with en-suite, plus a family bathroom
- Versatile top-floor space suitable for a fourth bedroom or office
- EPC: C
- Council Band: G



Interested?

dorking@ralphjames.co.uk
01306 284555

#

ralphjames.co.uk

Guildford Road, Westcott
Total Area: 188.9 m² ... 2033 ft²
FOR ILLUSTRATIVE PURPOSES ONLY.

Whilst every attempt has been made to ensure the accuracy of the floor plan shown, all measurements, positioning, fixtures, features, fittings and any other data shown are an approximate interpretation for illustrative purposes only and are not to scale.

No responsibility is taken for any error, omission, miss-statement or use of data shown.

The above statement applies to both 'Stil Moving London LTD' and the Company or individual displaying this floor plan.

Unauthorised reproduction prohibited.

© Stil Moving London LTD (www.stilmoving.london)

 RALPH JAMES