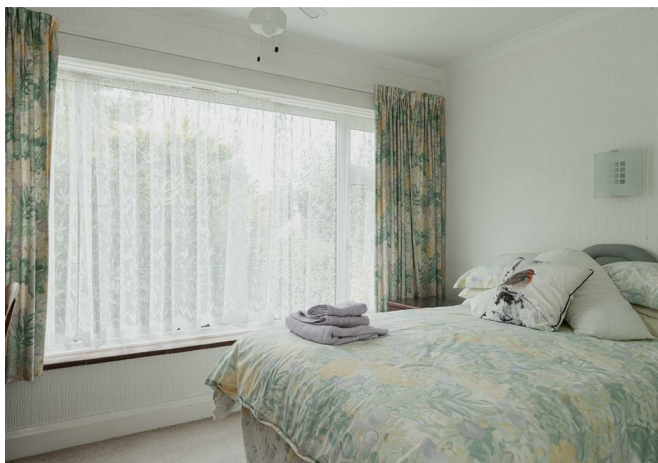




Longfield Road, Dorking  
£800,000







A rare opportunity to acquire this two double bedroom detached bungalow located within easy reach of Dorking town centre and located on a double width plot.







Welcome to Longfield Road, Dorking - a charming location for this delightful detached two-bedroom bungalow. This property boasts two spacious reception rooms perfect for entertaining guests or simply relaxing with your loved ones. With two bathrooms, convenience is key in this lovely home.

Situated in an enviable position siding onto the Nower, nature is right at your doorstep, offering a tranquil and picturesque setting. The potential to extend this bungalow further, subject to planning permission, opens up a world of possibilities for customising the space to suit your needs and desires.

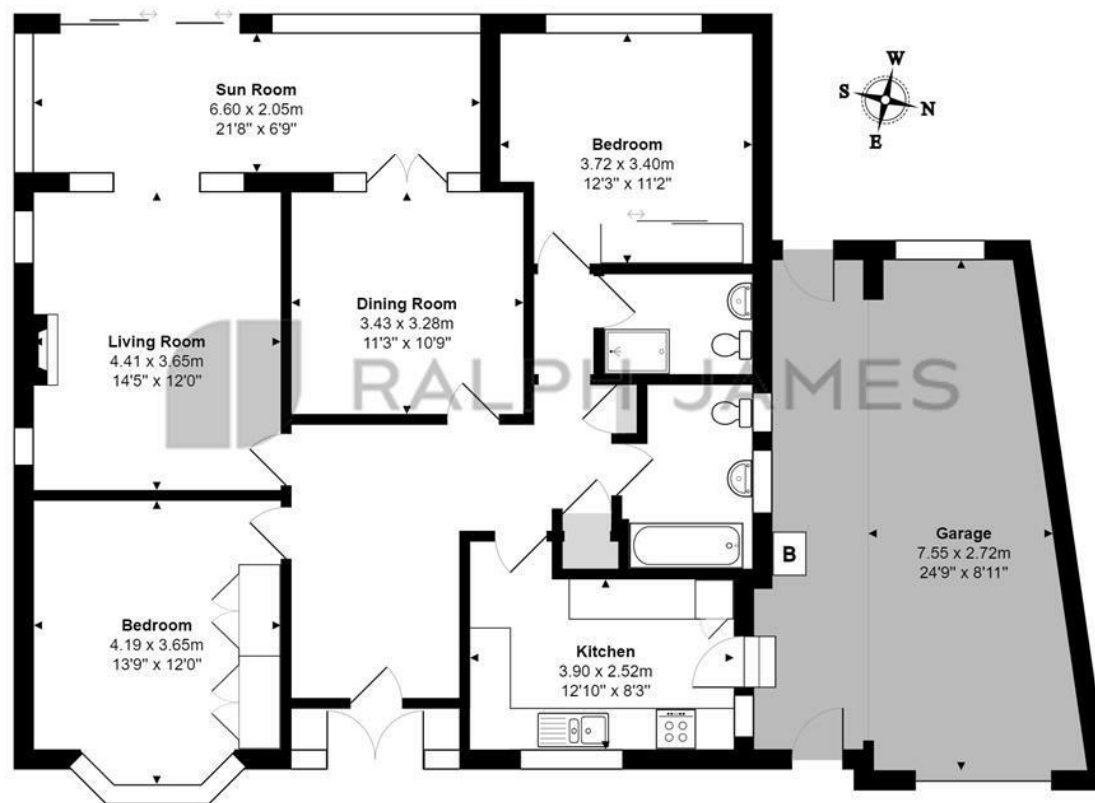
Conveniently located just a short distance from Dorking town centre, you'll have easy access to a variety of amenities, shops, and restaurants, making daily life a breeze. And with no ongoing chain, the path to making this property your own is clear and uncomplicated.





## Need to know

- Detached two bedroom bungalow.
- Flexible accommodation.
- Separate kitchen.
- Two reception rooms plus an additional sun room.
- Secluded walled garden surrounding the home.
- Attached double length garage.
- Stunning position siding onto the Nower.
- Short distance from Dorking town centre.
- Stones throw away from two excellent schools, secondary and primary.
- No ongoing chain.



### Ground Floor

Longfield Road, Dorking

Total Area: 146.2 m<sup>2</sup> ... 1574 ft<sup>2</sup>

FOR ILLUSTRATIVE PURPOSES ONLY.

Whilst every attempt has been made to ensure the accuracy of the floor plan shown, all measurements, positioning, fixtures, features, fittings and any other data shown are an approximate interpretation for illustrative purposes only and are not to scale.

No responsibility is taken for any error, omission, miss-statement or use of data shown.

The above statement applies to both 'Still Moving London LTD' and the Company or individual displaying this floor plan.

Unauthorised reproduction prohibited.

© Still Moving London LTD (www.stillmoving.london)



## Interested?

dorking@ralphjames.co.uk  
01306 284555

ralphjames.co.uk