



Horsham Road, Beare Green

£230,000

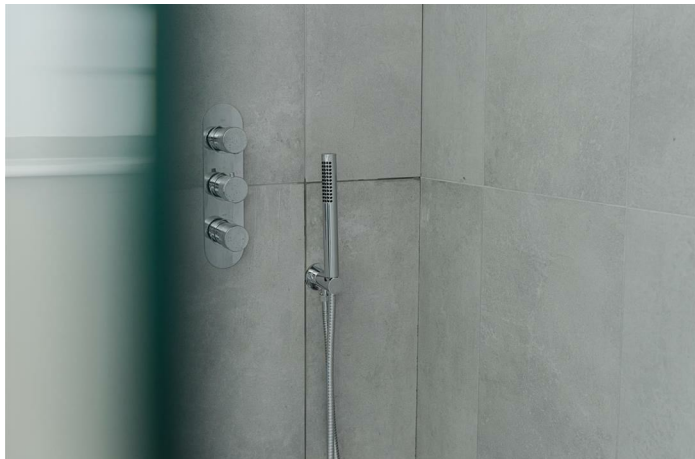




“

Step into history with this charming one-bedroom apartment! Formerly a beloved public house, it blends old-world charm with modern comfort, offering stunning views and a prime location in Dorking. Don't miss out!

”



Last Two Remaining!

Nestled within a meticulously renovated conversion development, this one-bedroom, one-bathroom apartment exudes the charm of its former life as a beloved public house. Conveniently located in Dorking, it offers not only a piece of local history but also easy access to the town's amenities and cultural richness.

The bedroom is generously sized, providing a comfortable and private retreat. The blend of contemporary design with retained original features from the public house adds character to the apartment, creating a visually appealing and functionally modern living experience.

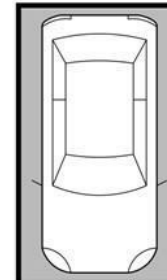
Residents also benefit from an allocated parking spot and a share of the freehold, fostering a sense of ownership and community within Dukes Court. In summary, this apartment offers a lifestyle that seamlessly combines historical charm with modern comfort, inviting residents to be part of the unique story of Dorking's history.

The photos provided are for illustrative purposes only and may depict the development; they may not necessarily represent the specific flat being referenced. However, the floorplan provided is accurate

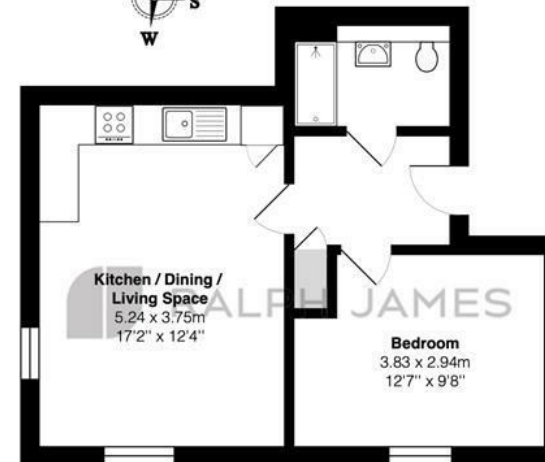


Need to know

- Charming first-floor one-bedroom apartment
- Spacious open-plan kitchen/living room
- Stylish and modern bathroom
- Dedicated parking spot for convenience
- Perfect blend of comfort, style, and convenience
- Seamlessly blends style and functionality
- Modern appliances
- One good sized double
- Share of the freehold for a sense of ownership
- Converted Pub



1x Designated Parking Space



First Floor

Dukes Court, Horsham Road, Beare Green

Total Area: 40.1 m² ... 432 ft² (excluding 1x designated parking space)

FOR ILLUSTRATIVE PURPOSES ONLY.

Whilst every attempt has been made to ensure the accuracy of the floor plan shown, all measurements, positioning, fixtures, features, fittings and any other data shown are an approximate interpretation for illustrative purposes only and are not to scale.

No responsibility is taken for any error, omission, miss-statement or use of data shown.

The above statement applies to both 'Still Moving London LTD' and the Company or individual displaying this floor plan.

Unauthorised reproduction prohibited.

© Still Moving London LTD (www.stillmoving.london)



Interested?

dorking@ralphjames.co.uk
01306 284555

#

ralphjames.co.uk