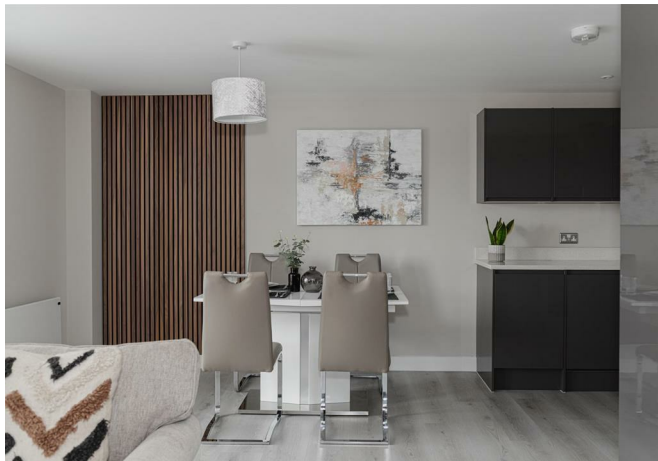




# Chalkpit Lane, Dorking

£300,000





“

An exceptional, thoughtfully designed apartment in the heart of Dorking with excellent transport links. This apartments convenient location would appeal to a single professional or couple.

”





Forming part of this modern development is a contemporary and stylish one bed apartment. Leith Hill apartment's is located just moments away from Dorking town centre with its array of shops and local amenities.

This thoughtfully designed apartment benefits from a Juliet balcony offering fantastic views across the Surrey Hills. The beautifully appointed open plan kitchen/diner is ideal for entertaining with its array of integrated appliances. There is a spacious double bedroom and luxurious bathroom with bath and overhead shower.

Finished to an exceptional standard, this wonderful apartment would be ideal for a single professional or couple with its excellent transport links.

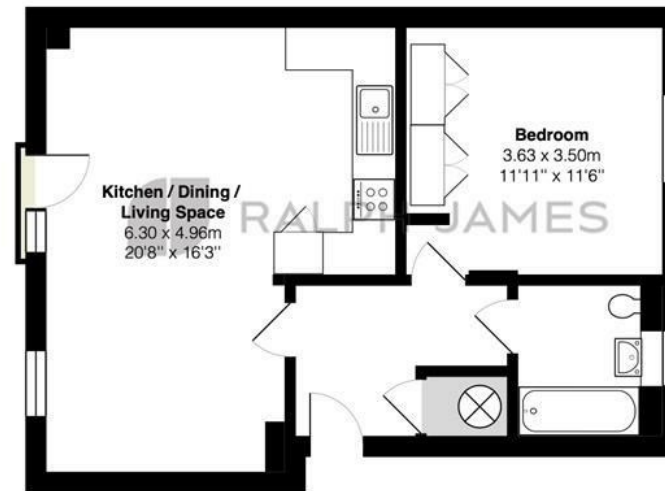
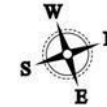
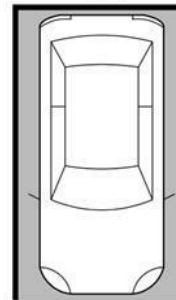
The property benefits from one allocated parking space.



## Need to know

- Price guide - £300,000 - £325,000
- One bedroom apartment on the second floor
- Juliet balcony offering fabulous views
- Nestled in the Surrey Hills
- One allocated parking space
- Great transport links into Central London
- 122 year lease remaining
- Council Tax Band - C

1x Allocated  
Parking Space



First Floor

Leith Hill Apartments, Chalkpit Lane, Dorking

Total Area: 52.4 m<sup>2</sup> ... 564 ft<sup>2</sup>

FOR ILLUSTRATIVE PURPOSES ONLY.

Whilst every attempt has been made to ensure the accuracy of the floor plan shown, all measurements, positioning, fixtures, features, fittings and any other data shown are an approximate interpretation for illustrative purposes only and are not to scale.

No responsibility is taken for any error, omission, miss-statement or use of data shown.

The above statement applies to both 'Still Moving London LTD' and the Company or individual displaying this floor plan.

Unauthorised reproduction prohibited.

© Still Moving London LTD (www.stillmoving.london)

## Interested?

dorking@ralphjames.co.uk  
01306 284555

ralphjames.co.uk

