



Horsham Road, Beare Green

£285,000





Whether embarking on the thrilling journey of homeownership, seeking a lucrative investment opportunity, or downsizing without compromising on style and comfort, this property promises a lifestyle that seamlessly blends sophistication with practicality. Embrace the perfect fusion of indoor and outdoor living, modern amenities, and the assurance of secure parking in this inviting one-bedroom sanctuary.





Discover this exceptional one-bedroom apartment, seamlessly blending style and functionality to cater to the diverse needs of buyers, investors, and downsizers. Upon entering, tall ceilings create an airy ambiance, setting the tone for the thoughtfully designed space.

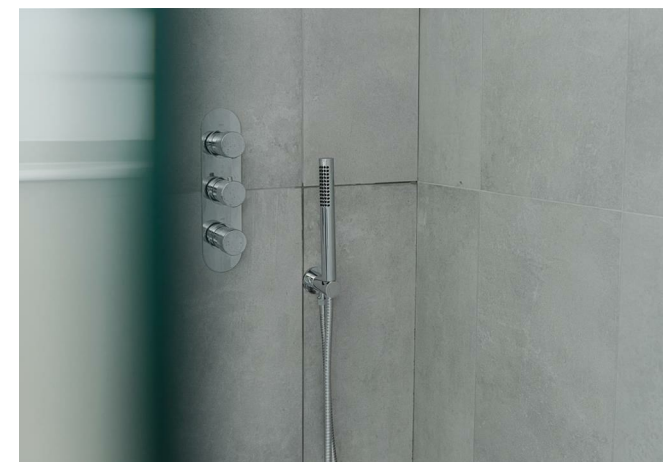
The heart of the home is the open-plan kitchen/living room, a contemporary haven boasting elegance and practicality. The kitchen, equipped with modern appliances, invites culinary exploration or simple convenience.

A standout feature is the expansive private terrace, offering mesmerizing views and extending the living space outdoors. Perfect for relaxation or entertaining, it adds a unique dimension to the property compared to others in the development.

The tranquil bedroom and modern bathroom complete the picture of comfort and sophistication. An allocated parking spot and a share of the freehold ensure practicality and a sense of ownership.

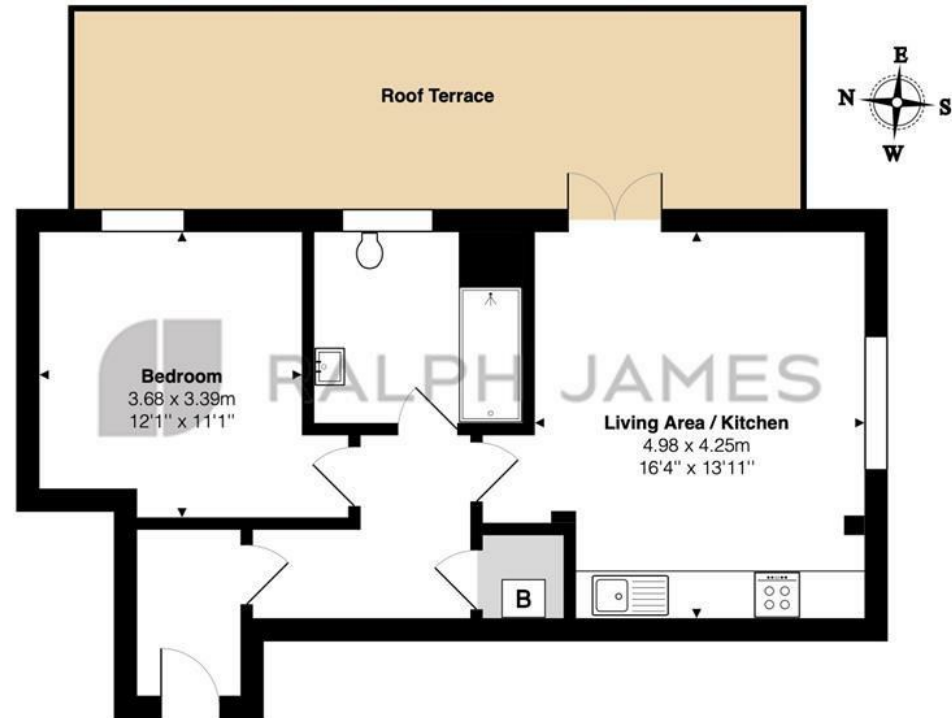
Whether you're a first-time buyer, investor, or downsizer, this property offers a lifestyle that balances sophistication with practicality, blending indoor comfort with outdoor allure.

The photos provided are for illustrative purposes only and may depict the development; they may not necessarily represent the specific flat being referenced. However, the floorplan provided is accurate.



Need to know

- Exceptional one-bedroom apartment blending style and functionality
- Tall ceilings create an airy ambiance upon entry
- Open-plan kitchen/living room exudes contemporary elegance and practicality
- Modern kitchen appliances
- Expansive private terrace offers mesmerising views and extends living space outdoors
- Great sized bedroom and bathroom
- Allocated parking spot
- Share of freehold
- Ideal for first-time buyers, investors, or downsizers
- Top floor



First Floor Flat

Dukes Court, Horsham Road, Beare Green, Dorking
Total Area: 52.2 m² ... 562 ft² (excluding roof terrace)

FOR ILLUSTRATIVE PURPOSES ONLY.

Whilst every attempt has been made to ensure the accuracy of the floor plan shown, all measurements, positioning, fixtures, features, fittings and any other data shown are an approximate interpretation for illustrative purposes only and are not to scale.

No responsibility is taken for any error, omission, miss-statement or use of data shown.

The above statement applies to both 'Still Moving London LTD' and the Company or individual displaying this floor plan.

Unauthorised reproduction prohibited.

© Still Moving London LTD (www.stillmoving.london)



Interested?

dorking@ralphjames.co.uk
01306 284555

#

ralphjames.co.uk