



Horsham Road, Beare Green

£325,000





Step into history with this charming two-bedroom apartment! Formerly a beloved public house, it blends old-world charm with modern comfort, offering stunning views and a prime location in Dorking. Don't miss out!





Nestled within a meticulously renovated conversion development, this two-bedroom, one-bathroom apartment exudes the charm of its former life as a beloved public house. Conveniently located in Dorking, it offers not only a piece of local history but also easy access to the town's amenities and cultural richness.

Both bedrooms are generously sized, providing comfortable and private retreats. The blend of contemporary design with retained original features from the public house adds character to the apartment, creating a visually appealing and functionally modern living experience.

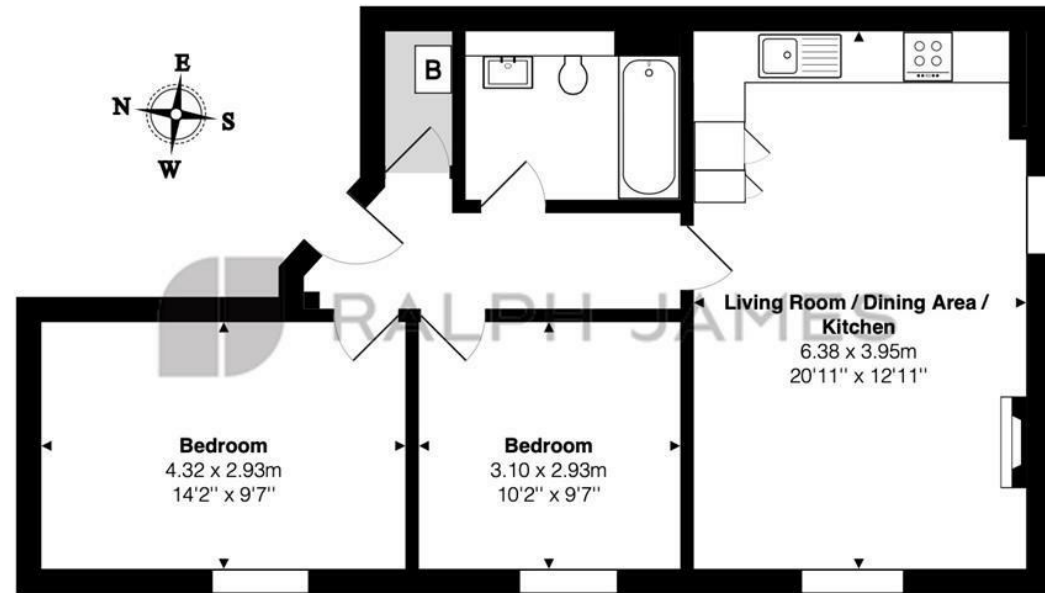
Residents also benefit from an allocated parking spot and a share of the freehold, fostering a sense of ownership and community within Dukes Court. In summary, this apartment offers a lifestyle that seamlessly combines historical charm with modern comfort, inviting residents to be part of the unique story of Dorking's history.

The photos provided are for illustrative purposes only and may depict the development; they may not necessarily represent the specific flat being referenced. However, the floorplan provided is accurate



Need to know

- Charming first-floor two-bedroom apartment
- Seamlessly blends style and functionality
- Spacious open-plan kitchen/living room
- Modern appliances
- Stylish and modern bathroom
- Two sizable bedrooms
- Dedicated parking spot for convenience
- Share of the freehold for a sense of ownership
- Perfect blend of comfort, style, and convenience
- Converted Pub



First Floor Flat

Dukes Court, Horsham Road, Beare Green, Dorking

Total Area: 61.5 m² ... 662 ft²

FOR ILLUSTRATIVE PURPOSES ONLY.

Whilst every attempt has been made to ensure the accuracy of the floor plan shown, all measurements, positioning, fixtures, features, fittings and any other data shown are an approximate interpretation for illustrative purposes only and are not to scale.

No responsibility is taken for any error, omission, miss-statement or use of data shown.

The above statement applies to both 'Still Moving London LTD' and the Company or individual displaying this floor plan.

Unauthorised reproduction prohibited.

Â© Still Moving London LTD (www.stillmoving.london)



Interested?

dorking@ralphjames.co.uk
01306 284555

#

ralphjames.co.uk