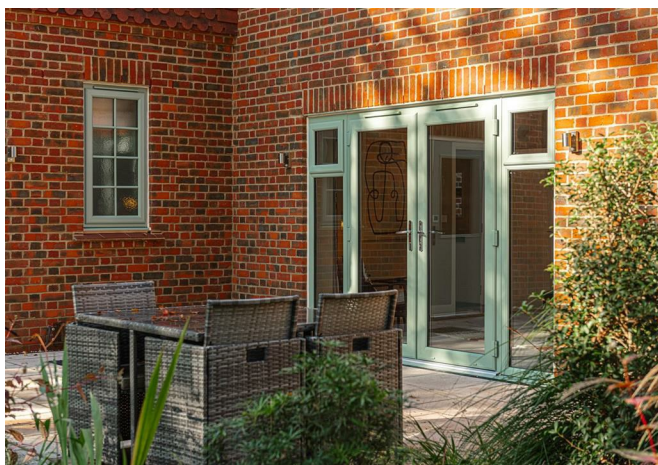




Firethorn Place, Ewhurst

£579,950





Firethorn Place by Croudace Homes is a unique collection of 4 bedroom high specification new homes in the peaceful Surrey village of Ewhurst.





Each home within Firethorn Place is considered in design, generous in proportion and gives peace of mind with the distinctive high quality specification and service offered by a Croudace built home. The Westcott is a stunning four bedroom family home, built within a pretty, verdant setting.

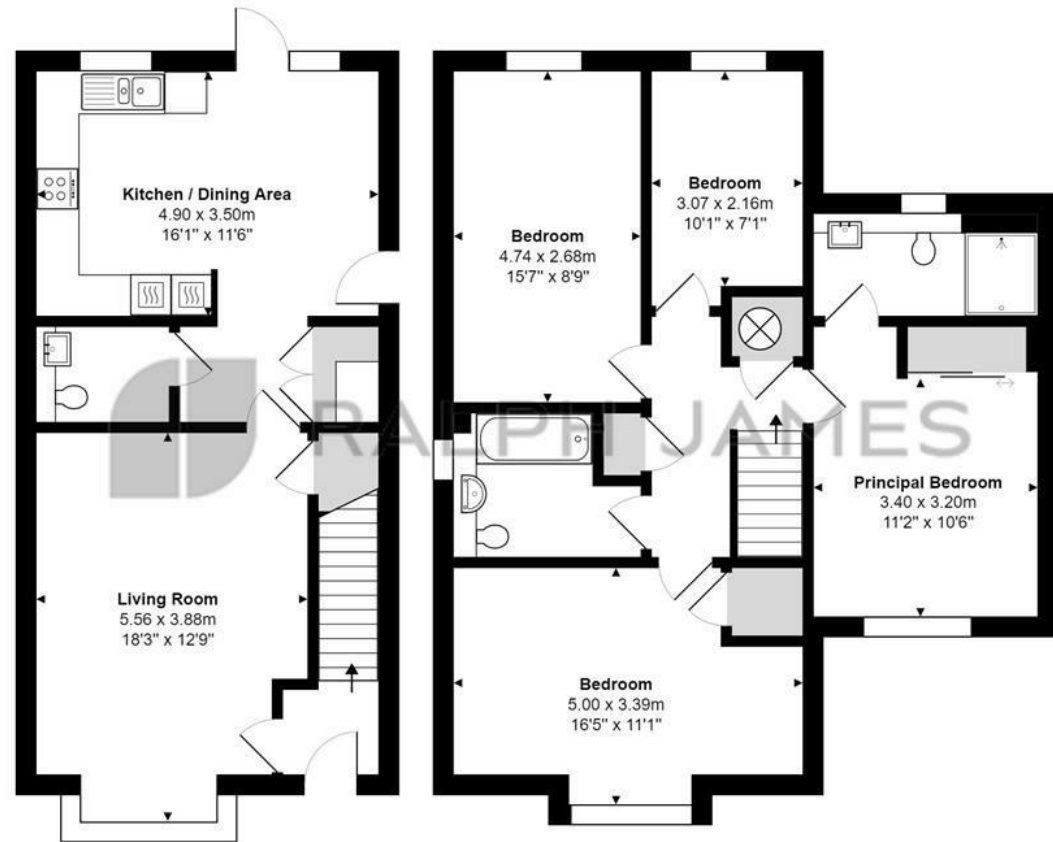
The kitchen/dining area is open-plan, perfect for entertaining friends and family, with a door that opens onto the patio, enlarging the space, and a door providing access to the drive-through. The designer fitted kitchen, supplied by Omega Kitchens, has integrated double oven, induction hob, fridge/freezer and dishwasher. The spacious living room has a box bay window and is a cosy space.

The Westcott has four generously-sized bedrooms. The master bedroom also has a fitted en-suite and a built-in wardrobe. The bathroom and en-suite have ceramic wall tiles and are perfect for pampering and indulgence, with fitted hardware, thermostatic digital showers and heated towel rails.

Over 40% of Firethorn Place is biodiverse open space and with over 11,900 plants, trees, shrubs, hedging and bushes planted across the development. Surrounded by rolling Surrey countryside, Ewhurst is just the place for a winter walk and a cosy pub lunch. Walking distance from the development, you'll find the charming Hazelbank Country Stores and Ewhurst C of E primary school.

Need to know

- A collection of brand new homes, built by Croudace Homes in 2023 to a high specification.
- The Westcott is a four bedroom detached home with 1,271 sq ft of accommodation set over two floors.
- The ground floor consists of entrance hall, cloakroom, living room, utility room, kitchen / dining area with doors leading onto rear garden.
- The first floor has ensuite master bedroom with fitted wardrobe, three further bedrooms and a family bathroom.
- Chartwell Green window frames, front door, arch lintels and garage door.
- Luxurious Amtico Spacia flooring and British-made Furlong Trident carpets throughout, with underfloor heating on the ground floor.
- This property benefits from a garage and driveway parking, and has been future-proofed with an external EV charging point.
- Just 2 miles East of Cranleigh, Ewhurst Village is surrounded by an Area of Great Landscape Value (AGLV) and is a part of the Surrey Hills AONB.
- EPC Rating B | Tax Council Band TBC | Development Service Charge: £349 pa
- Please note that the photographs are of the staged show home, and have been used to showcase the quality of build by Croudace Homes.



Firethorn Place, The Green, Ewhurst

Total Area: 121.1 m² ... 1303 ft²

FOR ILLUSTRATIVE PURPOSES ONLY.

Whilst every attempt has been made to ensure the accuracy of the floor plan shown, all measurements, positioning, fixtures, features, fittings and any other data shown are an approximate interpretation for illustrative purposes only and are not to scale.

No responsibility is taken for any error, omission, miss-statement or use of data shown.

The above statement applies to both 'Still Moving London LTD' and the Company or individual displaying this floor plan.

Unauthorised reproduction prohibited.

© Still Moving London LTD (www.stillmoving.london)

Interested?

dorking@ralphjames.co.uk
01306 284555

#

ralphjames.co.uk

