



# Vine Court, Chalkpit Lane, Dorking

£300,000





Ralph James presents this top-floor one-bedroom apartment in Dorking with a contemporary design, a larger floorplan, Surrey Hills views, and excellent transport links, including an allocated parking space.





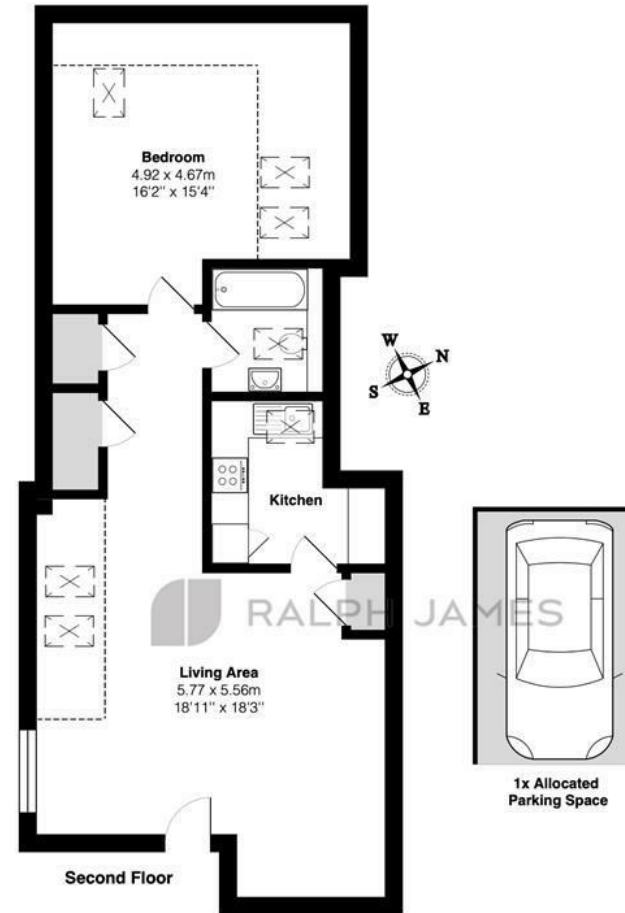
Presenting a superb top-floor one-bedroom apartment in Dorking, Ralph James invites you to view the epitome of contemporary living. The development, situated moments from Dorking town center, promises a lifestyle of convenience surrounded by shops and local amenities.

This thoughtfully designed property newly decorated by its current owner, boasts a larger floorplan than other one-bed flats in the development and is located on the top floor, providing breathtaking views of the Surrey Hills. The open-plan kitchen/diner, adorned with integrated appliances, provides an ideal space for entertaining. A spacious double bedroom and a luxurious bathroom complete the interior.

Crafted to an exceptional standard, this apartment is perfect for a single professional or a couple, offering excellent transport links for added convenience. The property includes the added benefit of an allocated parking space, enhancing the appeal of this contemporary gem in the heart of Dorking.

# Need to know

- Chain free
- Superb top-floor one-bedroom apartment in Dorking
- Contemporary living
- Lifestyle of convenience surrounded by shops and local amenities
- Thoughtfully designed, newly decorated, larger floorplan on the top floor
- Breathtaking Surrey Hills views
- Open-plan kitchen/diner with integrated appliances for entertaining
- Spacious double bedroom and luxurious bathroom
- Perfect for single professionals or couples
- Excellent transport links and allocated parking space, enhancing the appeal of this contemporary gem in the heart of Dorking.



---

## Interested?

dorking@ralphjames.co.uk  
01306 284555

ralphjames.co.uk

Box Hill Apartments, Vine Court, Chalkpit Lane, Dorking

Total Area: 71.9 m<sup>2</sup> ... 774 ft<sup>2</sup>

FOR ILLUSTRATIVE PURPOSES ONLY.

Whilst every attempt has been made to ensure the accuracy of the floor plan shown, all measurements, positioning, fixtures, features, fittings and any other data shown are an approximate interpretation for illustrative purposes only and are not to scale.

No responsibility is taken for any error, omission, miss-statement or use of data shown.

The above statement applies to both 'Still Moving London LTD' and the Company or individual displaying this floor plan.

Unauthorised reproduction prohibited.

© Still Moving London LTD (www.stillmoving.london)