



CREST
NICHOLSON

ALBANY WOOD

DEVELOPMENT PLAN

An attractive collection of 3, 4 & 5 bedroom homes within the beautiful market town of Bishops Waltham, Hampshire.

3, 4 & 5 BEDROOM HOMES



3 BEDROOM HOMES

- The Hatfield
- The Evesham
- The Chesham

4 BEDROOM HOMES

- The Romsey
- The Keswick
- The Lancing
- The Dorking

5 BEDROOM HOMES

- The Roydon

Affordable Housing

V Visitors Parking
CS Cycle Store
RS Refuse Store
SS Sub Station





THE CHESHAM

The Chesham is a generously sized three bedroom property. Inspired by tradition, it has a double-fronted layout and features an attractive bay window which, together with French doors, make this a beautifully bright property. A welcoming hallway leads to two spacious reception rooms: a kitchen-dining area and living room. The three bedrooms include a large master bedroom with an en suite. There is ample storage and quality fixtures and fittings throughout.

3 BEDROOM HOME



THE CHESHAM
3 Bedroom Home

crestnicholson.com

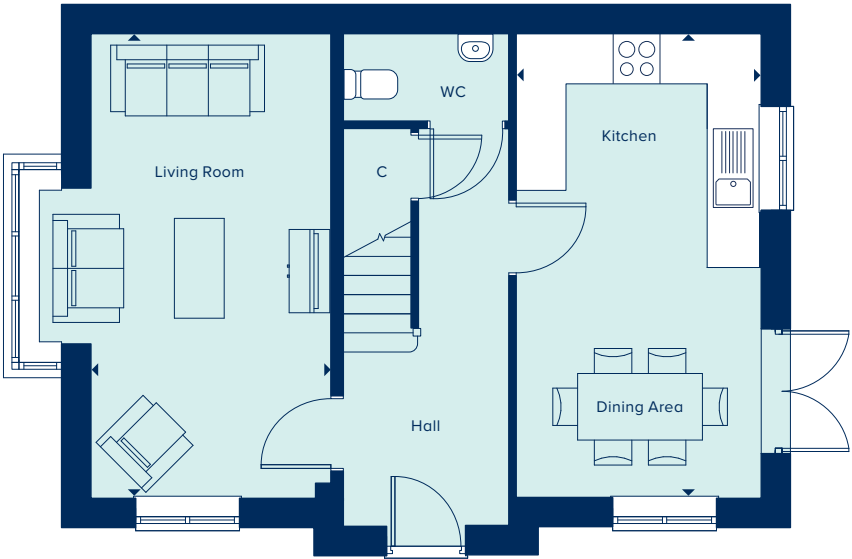
GROUND FLOOR

KITCHEN / DINING AREA

5.58m x 2.95m 18'4" x 9'8"

LIVING ROOM

5.58m x 2.89m 18'4" x 9'5"



FIRST FLOOR

BEDROOM 1

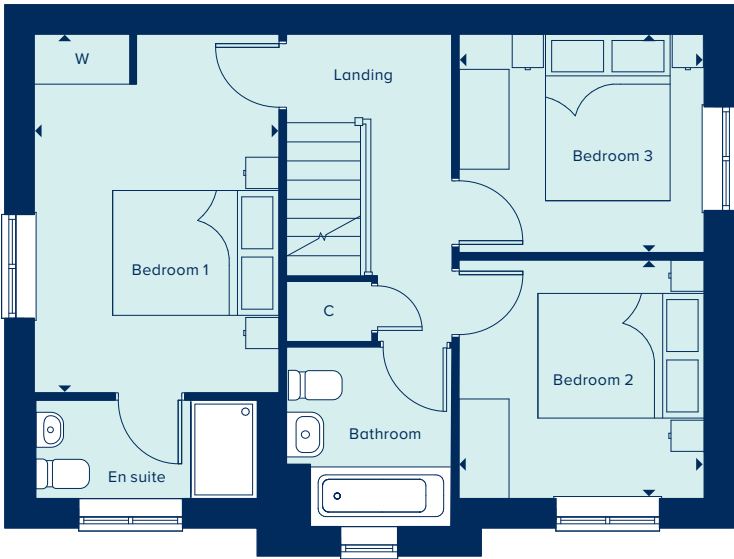
4.31m x 2.95m 14'1" x 9'8"

BEDROOM 2

2.95m x 2.87m 9'8" x 9'5"

BEDROOM 3

2.95m x 2.63m 9'8" x 8'7"



C Cupboard W Wardrobe

All images are used for illustrative purposes only and are not necessarily a precise representation. Images may be of a slightly different model of home and may include different specifications for example in respect of brick colour and options which involve additional cost. Individual features such as window, brick, carpets, paint and other material colours may vary and the specification of fittings may vary. Any furnishings and furniture are not included in any sale. Please check with our sales representatives for details of the exact specifications available at the development for each type of home. STU9879/January 2022.





THE DORKING

The Dorking is a spacious and flexible four-bedroom family home of high quality throughout. Spread over two-storeys, it offers ample living and entertaining spaces including a generous kitchen-dining area and a separate living room, both of which benefit from an abundance of natural light. A study allows for the option of providing a home-working space, or alternatively can be used as a snug or playroom. Upstairs, both the large master bedroom and second bedroom have en suite bathrooms and two further bedrooms share a bathroom.

4 BEDROOM HOME

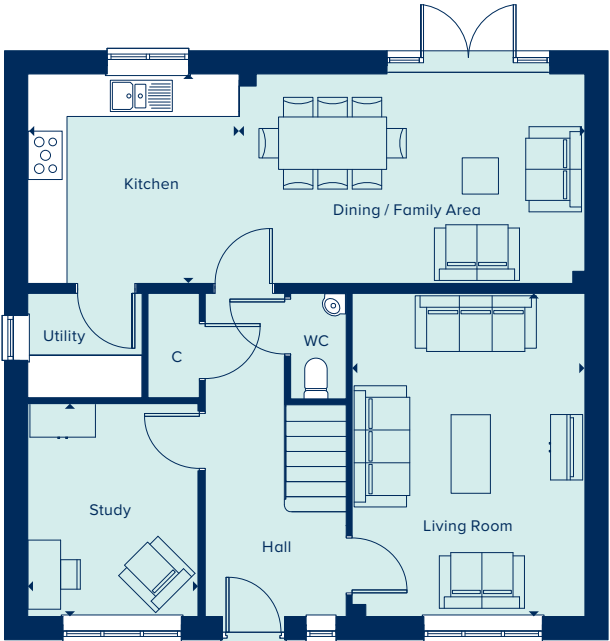


THE DORKING
4 Bedroom Home

crestnicholson.com

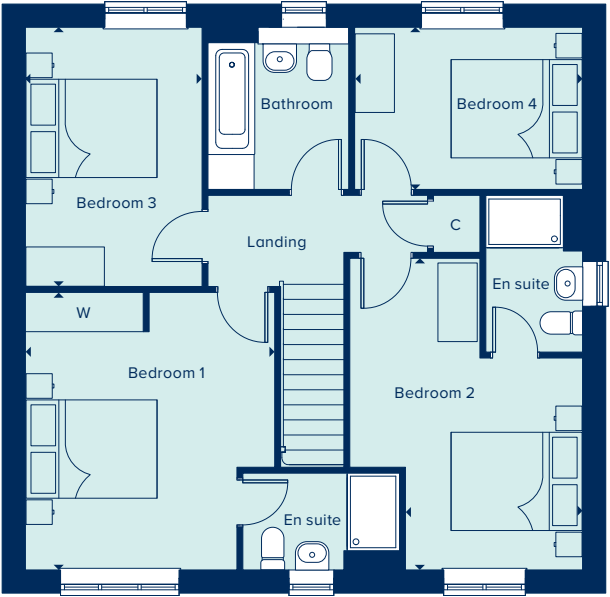
GROUND FLOOR

KITCHEN	
3.23m x 3.20m	10'7" x 10'6"
DINING / FAMILY AREA	
5.28m x 3.20m	17'4" x 10'6"
LIVING ROOM	
4.94m x 3.56m	16'2" x 11'8"
STUDY	
3.25m x 2.60m	10'8" x 8'6"



FIRST FLOOR

BEDROOM 1	
4.23m x 3.76m	13'11" x 12'4"
BEDROOM 2	
4.66m x 2.71m	15'3" x 8'10"
BEDROOM 3	
3.96m x 2.70m	13'0" x 8'10"
BEDROOM 4	
3.48m x 2.48m	11'5" x 8'1"



C Cupboard W Wardrobe ● Specification

All images are used for illustrative purposes only and are not necessarily a precise representation. Images may be of a slightly different model of home and may include different specifications for example in respect of brick colour and options which involve additional cost. Individual features such as window, brick, carpets, paint and other material colours may vary and the specification of fittings may vary. Any furnishings and furniture are not included in any sale. Please check with our sales representatives for details of the exact specifications available at the development for each type of home. STU9879/January 2022.





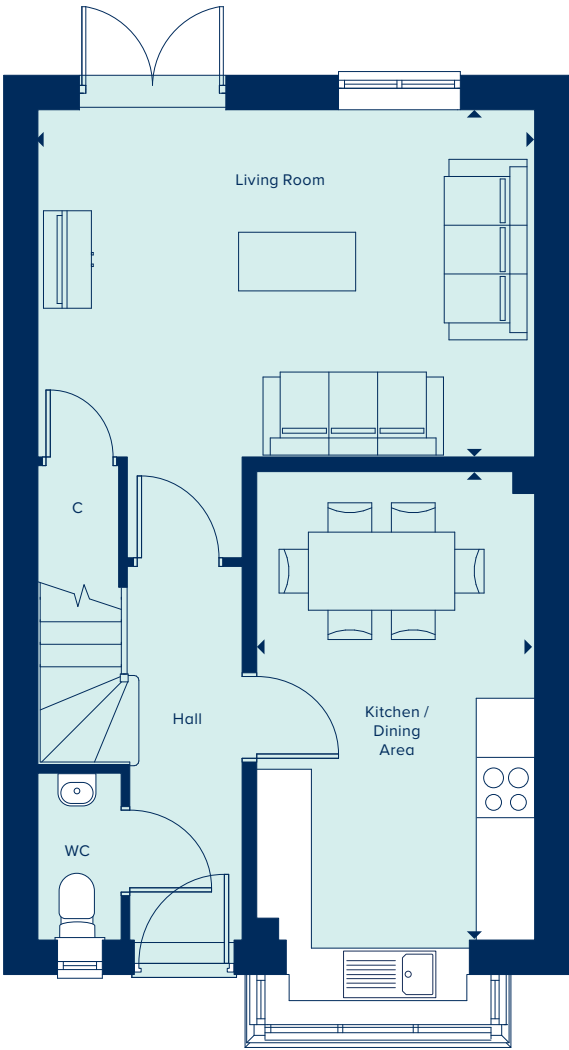
THE EVESHAM
3 Bedroom Home

crestnicholson.com

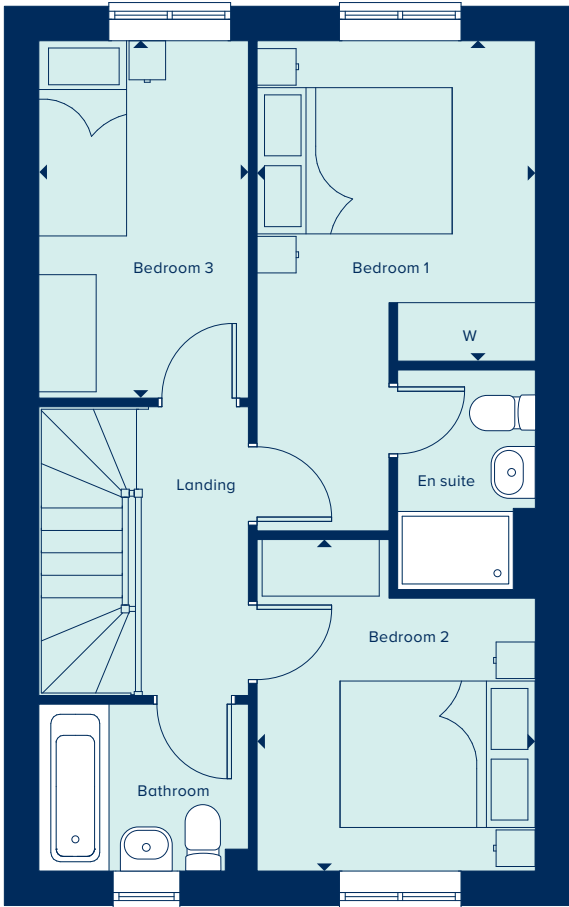
THE EVESHAM

The Evesham is a three-bedroom home which includes a versatile open-plan kitchen-dining area which is ideal for entertaining, in addition to a separate light and airy living room. The master bedroom benefits from an en suite bathroom. The house is perfectly suited to modern living, featuring a high quality kitchen, sanitaryware and fixtures and fittings throughout.

3 BEDROOM HOME



GROUND FLOOR		
KITCHEN / DINING AREA		
4.50m x 2.89m	18'0" x 9'6"	
LIVING AREA		
5.09m x 3.59m	16'8" x 11'9"	



FIRST FLOOR		
BEDROOM 1		
3.28m x 2.85m	10'9" x 9'4"	
BEDROOM 2		
3.39m x 2.85m	11'1" x 9'4"	
BEDROOM 3		
3.66m x 2.15m	12'0" x 7'0"	

C Cupboard W Wardrobe

All images are used for illustrative purposes only and are not necessarily a precise representation. Images may be of a slightly different model of home and may include different specifications for example in respect of brick colour and options which involve additional cost. Individual features such as window, brick, carpets, paint and other material colours may vary and the specification of fittings may vary. Any furnishings and furniture are not included in any sale. Please check with our sales representatives for details of the exact specifications available at the development for each type of home. STU9879/January 2022.





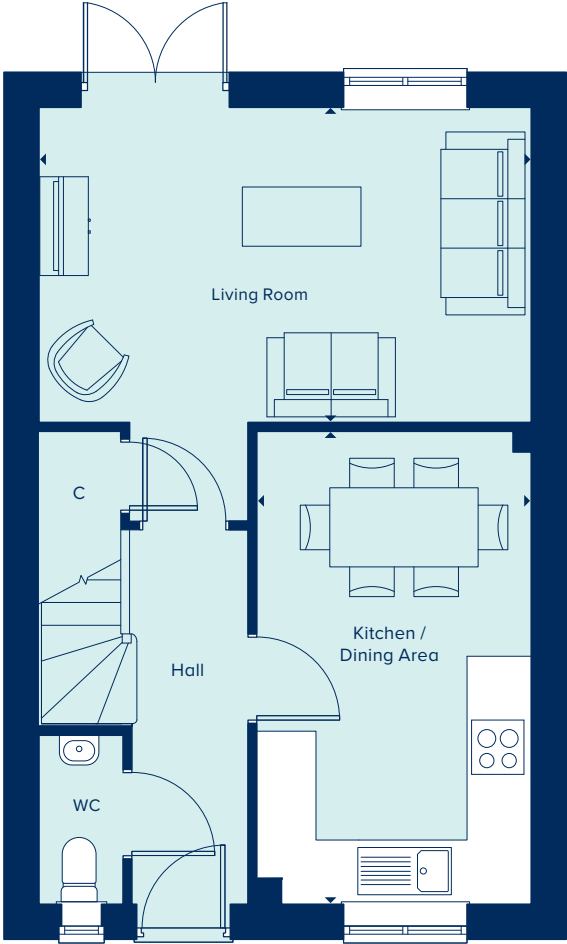
THE HATFIELD

The Hatfield is an attractive two-storey home perfect for family life, including an open-plan kitchen-dining area ideal for entertaining, in addition to a separate living room with French doors providing ample natural light and views over the private garden. Upstairs, the master bedroom has the benefit of an en suite bathroom and two further bedrooms share a family bathroom.

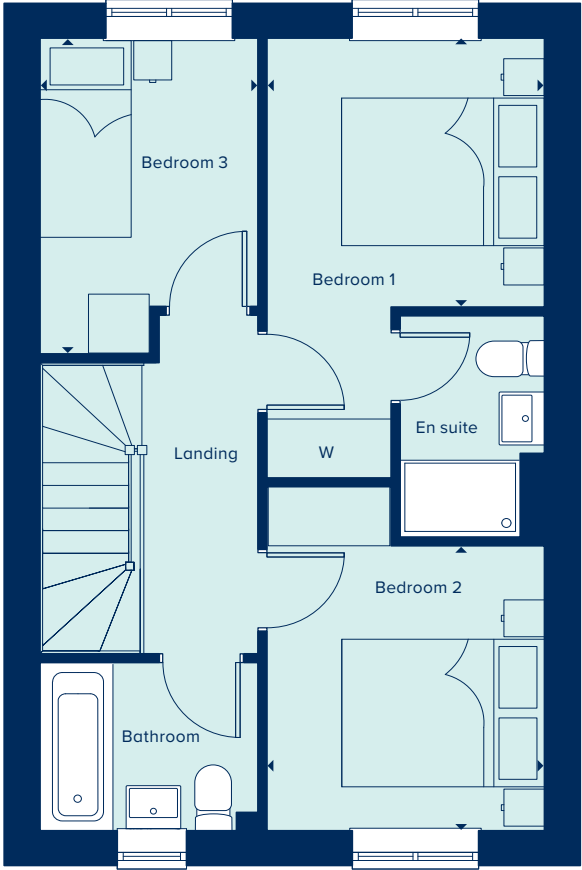


THE HATFIELD
3 Bedroom Home

crestnicholson.com



GROUND FLOOR		
KITCHEN / DINING AREA		
4.78m x 2.77m	15'8" x 9'1"	
LIVING ROOM		
4.97m x 3.18m	16'4" x 10'5"	



FIRST FLOOR		
BEDROOM 1		
2.73m x 2.73m	9'0" x 8'11"	
BEDROOM 2		
2.89m x 2.74m	9'6" x 9'0"	
BEDROOM 3		
3.21m x 2.15m	10'6" x 7'0"	

C Cupboard W Wardrobe

All images are used for illustrative purposes only and are not necessarily a precise representation. Images may be of a slightly different model of home and may include different specifications for example in respect of brick colour and options which involve additional cost. Individual features such as window, brick, carpets, paint and other material colours may vary and the specification of fittings may vary. Any furnishings and furniture are not included in any sale. Please check with our sales representatives for details of the exact specifications available at the development for each type of home. STU9879/January 2022.





THE KESWICK

Set over two-storeys, the Keswick is a spacious and intelligently laid-out family home. Its open-plan kitchen-dining area forms the heart of the house and a generous living room looks out over the private garden through full height patio doors. The ground floor study with its bay window also benefits from considerable natural light, providing a private space for homeworking. Upstairs, the large master bedroom has the benefit of an en suite bathroom and three further bedrooms share a family bathroom.

4 BEDROOM HOME



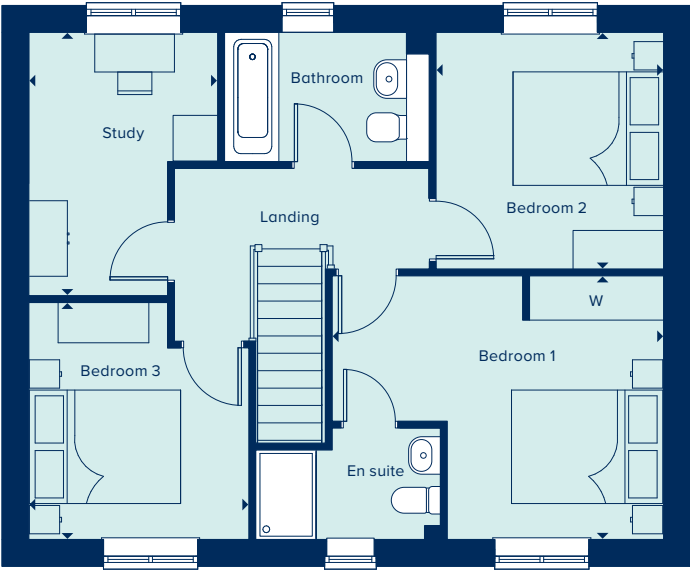
THE KESWICK
4 Bedroom Home

crestnicholson.com

GROUND FLOOR		
KITCHEN / DINING / FAMILY AREA		
6.71m x 3.09m	22'0" x 10'1"	
LIVING ROOM		
4.82m x 3.35m	15'9" x 11'0"	
STUDY		
3.41m x 2.48m	11'2" x 8'1"	



FIRST FLOOR		
BEDROOM 1		
4.35m x 3.49m	14'3" x 11'5"	
BEDROOM 2		
3.13m x 3.01m	9'10" x 10'3"	
BEDROOM 3		
3.12m x 2.91m	10'3" x 9'6"	
STUDY		
3.50m x 2.50m	11'5" x 8'2"	



C Cupboard W Wardrobe ● Specification

All images are used for illustrative purposes only and are not necessarily a precise representation. Images may be of a slightly different model of home and may include different specifications for example in respect of brick colour and options which involve additional cost. Individual features such as window, brick, carpets, paint and other material colours may vary and the specification of fittings may vary. Any furnishings and furniture are not included in any sale. Please check with our sales representatives for details of the exact specifications available at the development for each type of home. STU9879/January 2022.





THE LANCING

As you enter the Lancing, you are guaranteed a warm welcome. The entrance hall provides a sense of space that prevails throughout the house. The Living Room is similarly spacious and has the substantial benefit of natural light. The patio doors add to this sense of openness and provide direct access into the garden. Each of the four bedrooms is generously proportioned and the master bedroom has an en suite. With capacity for eight people across the four bedrooms, there's the opportunity to utilise a bedroom as a home office. Space, light and flexibility are the hallmarks of this house.

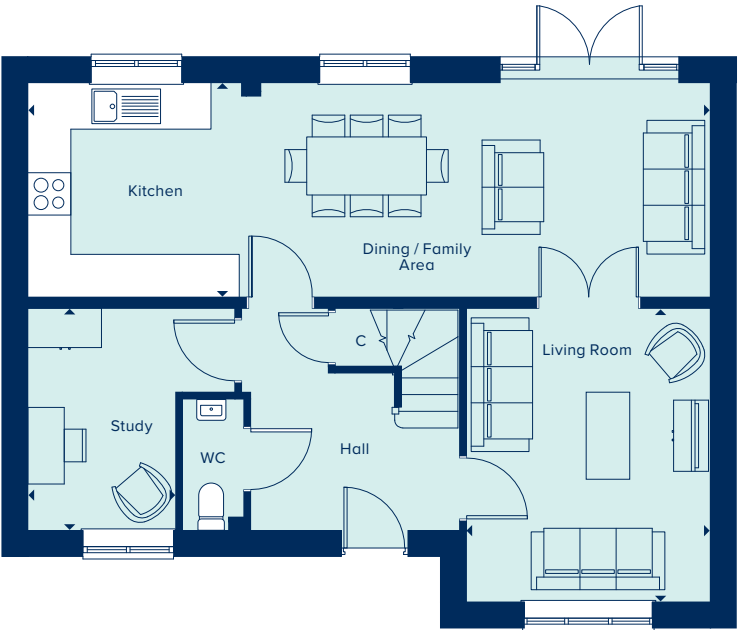
4 BEDROOM HOME



THE LANCING
4 Bedroom Home

crestnicholson.com

GROUND FLOOR		
KITCHEN / DINING / FAMILY AREA		
9.41m x 2.96m	30'10" x 9'8"	
LIVING ROOM		
4.05m x 3.37m	13'3" x 11'0"	
STUDY		
3.07m x 2.04m	10'0" x 6'8"	



FIRST FLOOR		
BEDROOM 1		
4.10m x 3.37m	13'5" x 11'0"	
BEDROOM 2		
3.45m x 3.14m	11'4" x 10'3"	
BEDROOM 3		
3.39m x 2.96m	11'1" x 9'8"	
BEDROOM 4		
2.94m x 2.82m	9'8" x 9'3"	



C Cupboard W Wardrobe ● Specification

All images are used for illustrative purposes only and are not necessarily a precise representation. Images may be of a slightly different model of home and may include different specifications for example in respect of brick colour and options which involve additional cost. Individual features such as window, brick, carpets, paint and other material colours may vary and the specification of fittings may vary. Any furnishings and furniture are not included in any sale. Please check with our sales representatives for details of the exact specifications available at the development for each type of home. STU99879/January 2022.





THE ROMSEY

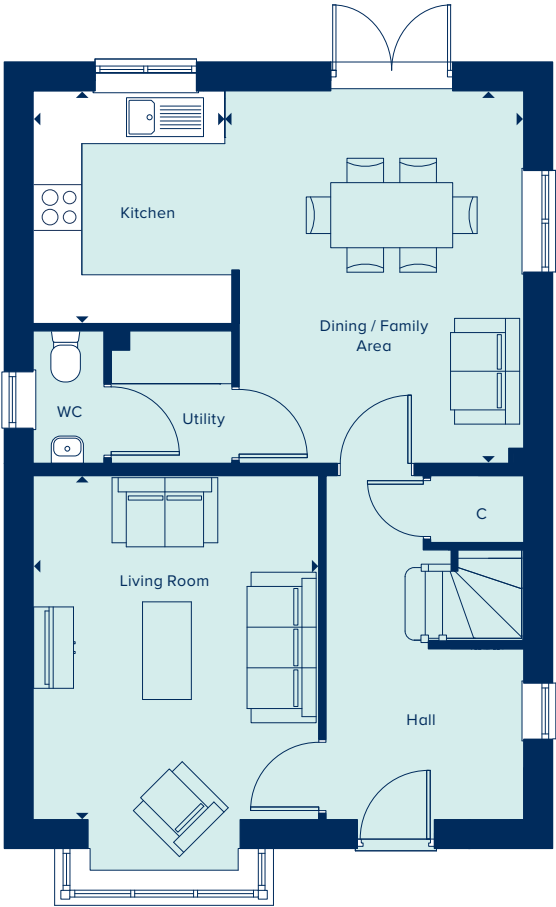
With flexible open-plan living space and generously sized bedrooms, the Romsey is an attractive family home. The downstairs benefits from a substantial, bright and airy living room. A versatile kitchen-dining area with ample space for relaxation or play is ideally suited to family life. Upstairs are four bedrooms and two bathrooms (one en suite). All fixtures and fittings, kitchen and sanitaryware are of excellent quality.

4 BEDROOM HOME



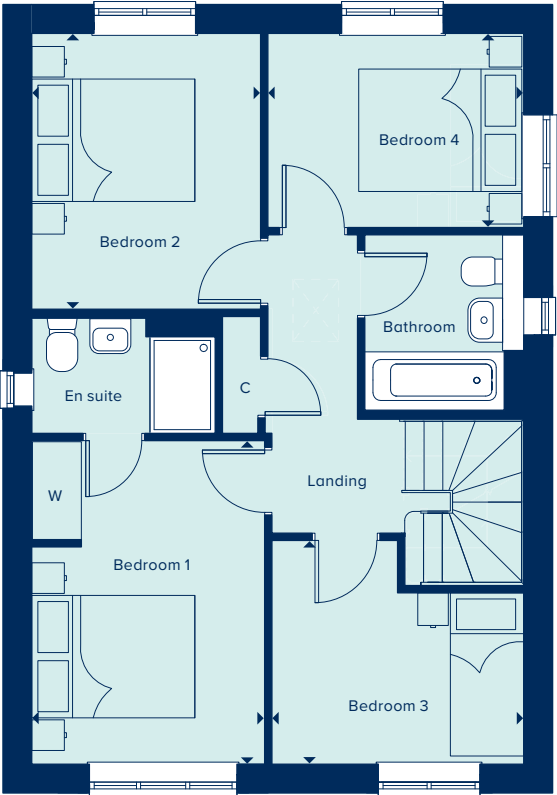
THE ROMSEY
4 Bedroom Home

crestnicholson.com



GROUND FLOOR

DINING / FAMILY AREA		
4.58m x 3.59m	15'0" x 11'9"	
KITCHEN		
2.86m x 2.44m	9'4" x 8'0"	
LIVING ROOM		
4.23m x 3.51m	13'10" x 11'6"	



FIRST FLOOR

BEDROOM 1		
3.97m x 2.90m	13'0" x 9'6"	
BEDROOM 2		
3.40m x 2.80m	11'1" x 9'2"	
BEDROOM 3		
3.05m x 2.79m	10'0" x 9'2"	
BEDROOM 4		
3.13m x 2.43m	10'3" x 7'11"	

C Cupboard W Wardrobe ● Specification

All images are used for illustrative purposes only and are not necessarily a precise representation. Images may be of a slightly different model of home and may include different specifications for example in respect of brick colour and options which involve additional cost. Individual features such as window, brick, carpets, paint and other material colours may vary and the specification of fittings may vary. Any furnishings and furniture are not included in any sale. Please check with our sales representatives for details of the exact specifications available at the development for each type of home. STU9879/January 2022.





THE ROYDON

With five bedrooms, a home office, games room or home cinema could be accommodated in the spacious Roydon. Each bedroom is generously sized and the house is light and airy. Spread over two storeys and with three bathrooms, a utility room and double garage, this home is well suited to family life.

5 BEDROOM HOME

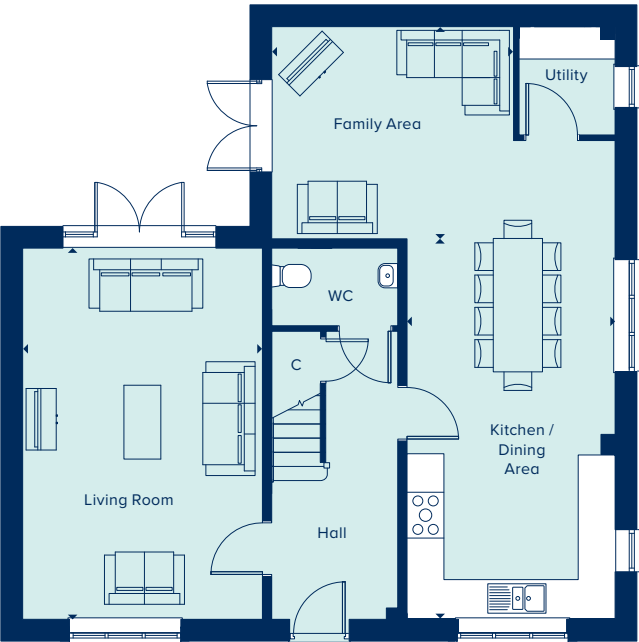


THE ROYDON
5 Bedroom Home

crestnicholson.com

GROUND FLOOR

FAMILY AREA	
3.93m x 3.45m	12'11" x 11'4"
KITCHEN / DINING AREA	
6.18m x 3.38m	20'3" x 11'1"
LIVING ROOM	
6.03m x 3.90m	19'9" x 12'9"



FIRST FLOOR

BEDROOM 1	
3.96m x 3.24m	13'0" x 10'7"
BEDROOM 2	
3.30m x 2.61m	10'10" x 8'6"
BEDROOM 3	
3.96m x 2.71m	13'0" x 8'10"
BEDROOM 4	
3.51m x 2.89m	11'6" x 9'5"
BEDROOM 5	
3.29m x 2.72m	10'9" x 8'11"



C Cupboard W Wardrobe

All images are used for illustrative purposes only and are not necessarily a precise representation. Images may be of a slightly different model of home and may include different specifications for example in respect of brick colour and options which involve additional cost. Individual features such as window, brick, carpets, paint and other material colours may vary and the specification of fittings may vary. Any furnishings and furniture are not included in any sale. Please check with our sales representatives for details of the exact specifications available at the development for each type of home. STU9879/January 2022.





CREST
NICHOLSON

ALBANY WOOD

DEVELOPMENT PLAN

An attractive collection of 3, 4 & 5 bedroom homes within the beautiful market town of Bishops Waltham, Hampshire.

3, 4 & 5 BEDROOM HOMES

