

Flat 23, Belvedere  
House Churchfields  
Avenue  
Weybridge



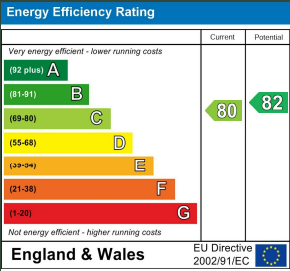


Flat 23, Belvedere  
House Churchfields

Local Authority  
Elmbridge

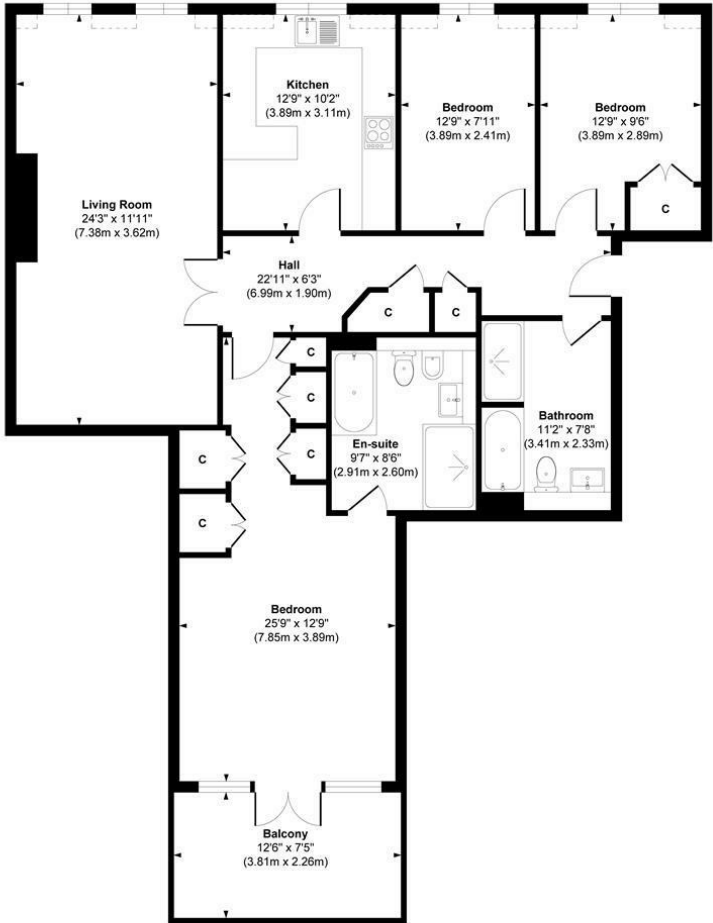
Council Tax Band  
G

Directions



Agents Note: Whilst every care has been taken to prepare these particulars, they are for guidance purposes only. All measurements are approximate and are for general guidance purposes only and whilst every care has been taken to ensure their accuracy, they should not be relied upon and potential buyers/tenants are advised to recheck the measurements

Belvedere House



Second Plan

Approx. Gross Internal Floor Area 1252 sq. ft / 116.36 sq. m

Illustration for identification purposes only, measurements are approximate, not to scale.  
Produced by Elements Property



Mint Homes  
14 Nicholas Gardens  
Pyrford  
Surrey  
GU22 8SD



Contact  
01932 336177  
[hello@minthomes.uk](mailto:hello@minthomes.uk)  
[minthomes.uk](http://minthomes.uk)

