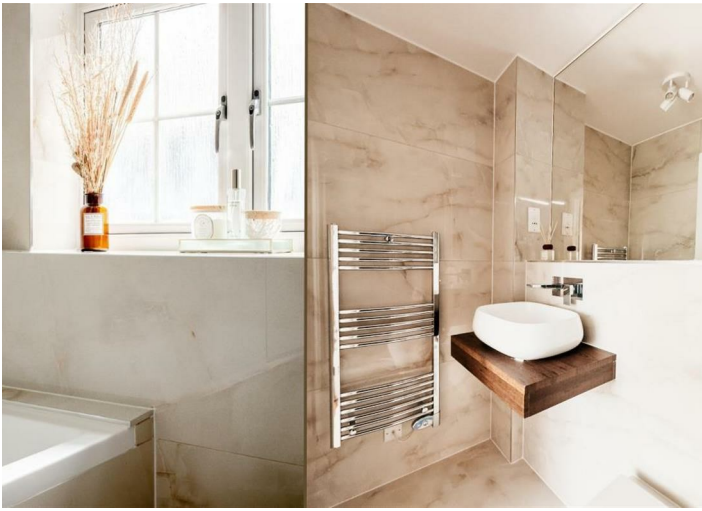


Flat 10, The  
Quadrant Brighton Road  
Addlestone  
KT15 1PX



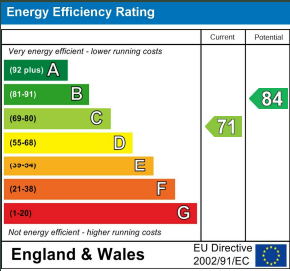


Flat 10, The  
Quadrant Brighton Road

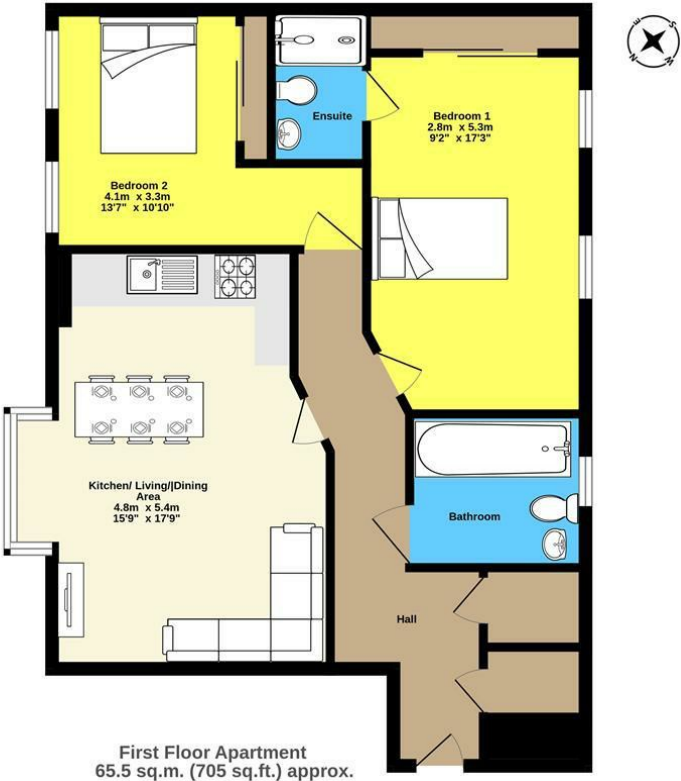
Local Authority  
Runnymede

Council Tax Band  
D

Directions



Agents Note: Whilst every care has been taken to prepare these particulars, they are for guidance purposes only. All measurements are approximate and are for general guidance purposes only and whilst every care has been taken to ensure their accuracy, they should not be relied upon and potential buyers/tenants are advised to recheck the measurements



First Floor Apartment  
65.5 sq.m. (705 sq.ft.) approx.



Mint Homes  
14 Nicholas Gardens  
Pyrford  
Surrey  
GU22 8SD



#### Contact

01932 336177  
hello@minthomes.uk  
minthomes.uk

