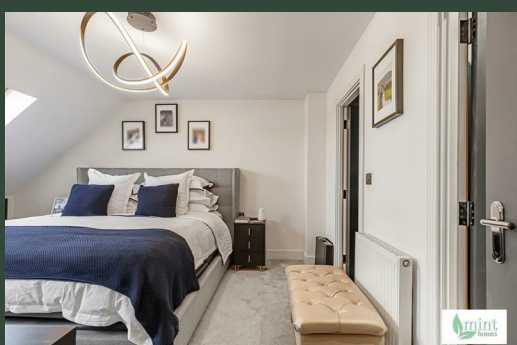


3 Holly Gate
Addlestone
KT15 1QA



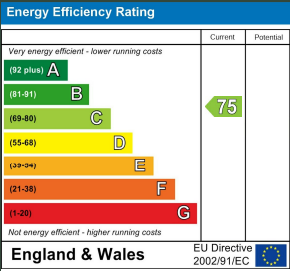


3 Holly Gate
£560,000

Local Authority
Runnymede

Council Tax Band
C

Directions



Agents Note: Whilst every care has been taken to prepare these particulars, they are for guidance purposes only. All measurements are approximate and are for general guidance purposes only and whilst every care has been taken to ensure their accuracy, they should not be relied upon and potential buyers/tenants are advised to recheck the measurements



Approx. Gross Internal Floor Area 1187 sq. ft / 110.42 sq. m
Illustration for identification purposes only, measurements are approximate, not to scale.
Produced by Elements Property



Mint Homes
14 Nicholas Gardens
Pyrford
Surrey
GU22 8SD



Contact

01932 336177
hello@minthomes.uk
minthomes.uk

