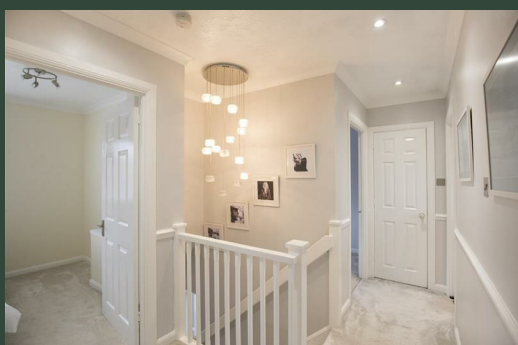


19 Wilson Drive
Chertsey
KT16 0NT



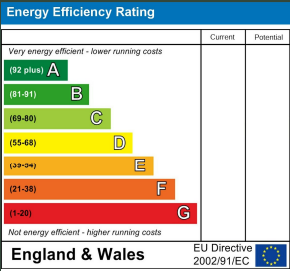


19 Wilson Drive
£815,000

Local Authority
Runnymede Borough Council

Council Tax Band
G

Directions



Agents Note: Whilst every care has been taken to prepare these particulars, they are for guidance purposes only. All measurements are approximate and are for general guidance purposes only and whilst every care has been taken to ensure their accuracy, they should not be relied upon and potential buyers/tenants are advised to recheck the measurements

Wilson Drive

Approximate Gross Internal Area = 1377 sq ft / 127.9 sq m
Garage / Gym = 286 sq ft / 26.7 sq m
Total = 1663 sq ft / 154.6 sq m



This plan is not to scale and must be used as layout guidance only. All measurements and areas are approximate and should not be relied upon to provide accurate information. This plan must not be relied upon when making property valuations, design considerations or any other such relevant decisions. We accept no responsibility or liability (whether in contract, tort or otherwise) in relation to any loss whatsoever arising from or in connection with any use of this plan or the adequacy, accuracy or completeness of it or any information within it.



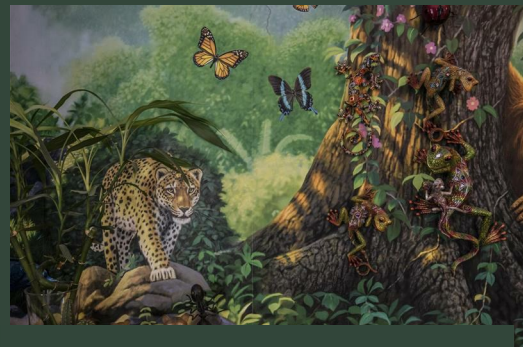
Mint Homes

14 Nicholas Gardens

Pyrford

Surrey

GU22 8SD



Contact

01932 336177

hello@minthomes.uk

minthomes.uk

