

10 Coldharbour Road
Woking
GU22 8SN



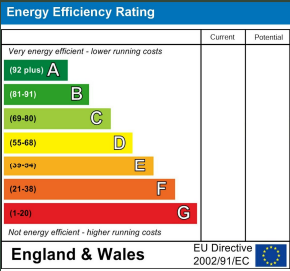


10 Coldharbour Road
£480,000

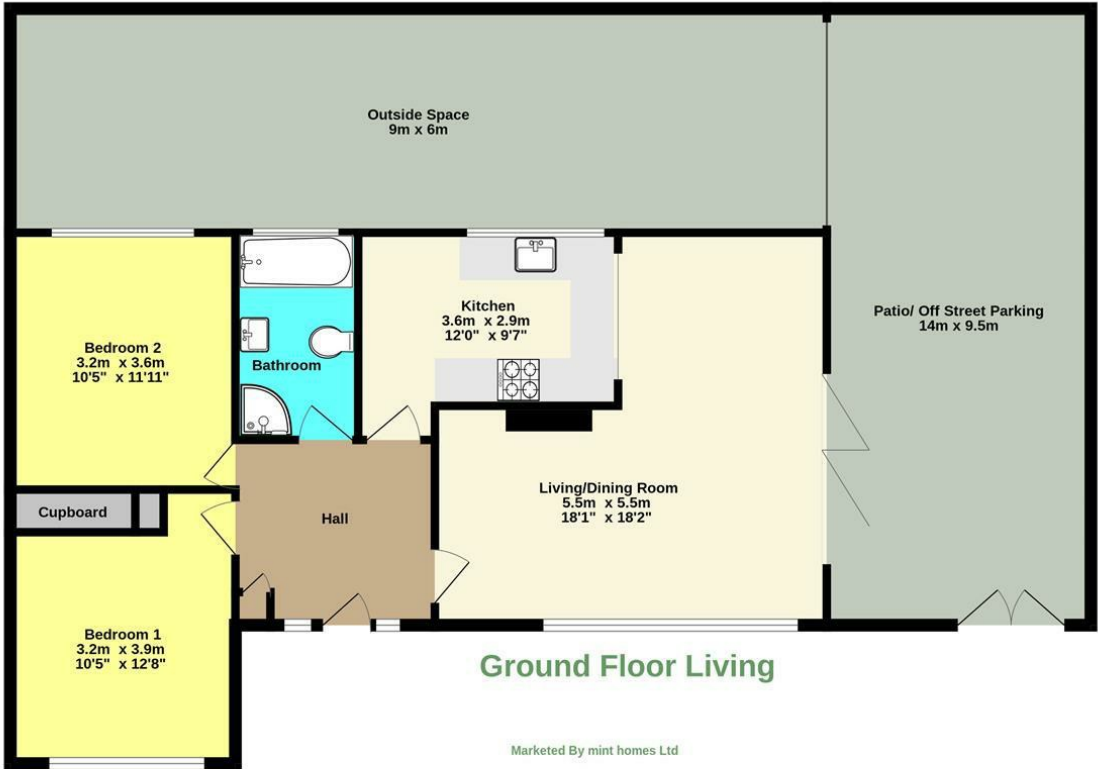
Local Authority
Woking Borough Council

Council Tax Band
F

Directions



Agents Note: Whilst every care has been taken to prepare these particulars, they are for guidance purposes only. All measurements are approximate and are for general guidance purposes only and whilst every care has been taken to ensure their accuracy, they should not be relied upon and potential buyers/tenants are advised to recheck the measurements



Ground Floor Living

Marketed By mint homes Ltd

TOTAL FLOOR AREA : 69.4 sq.m. (747 sq.ft.) approx.

Marketed by mint homes Ltd. Whilst every attempt has been made to ensure the accuracy of the information contained here, measurements of doors, windows, rooms and any other items are approximate and no responsibility is taken by any error. Prepared by Simon Lee

Made with Metropix ©2024



Mint Homes
14 Nicholas Gardens
Pyrford
Surrey
GU22 8SD



Contact

01932 336177
hello@minthomes.uk
minthomes.uk

