

Simply Stunning, welcome to Eglinton Street in Dunbeth, a large 2-bedroom split level period property accompanied with a tastefully designed floored attic space. This charming property offers the perfect blend of tradition & modern living.

AMARCO Estates are delighted to introduce 65C Eglinton Street, an exceptional and charming Victorian apartment, nestled in undoubtedly one of the most desirable areas in Coatbridge. This impressive 2-bedroom split level property with an additional floored attic & bathroom offers an elegant and inviting atmosphere and is one not to be missed.

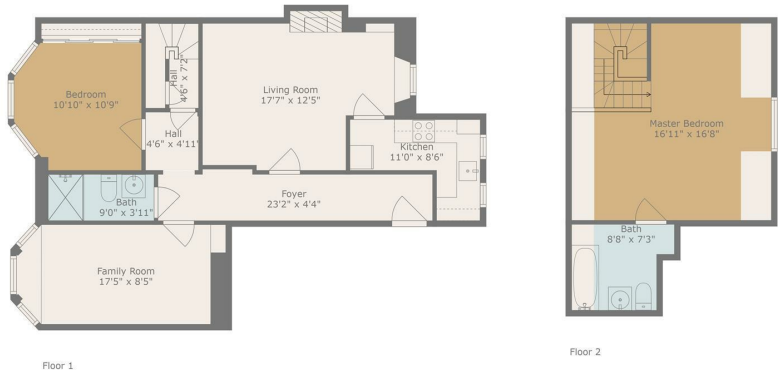
This home successfully marries traditional elegance with modern conveniences, featuring high ceilings and generously sized rooms adorned with contemporary decor. The stylish bathroom suite and kitchen further enhance its appeal. Additional highlights include a stunning floored attic space which has been utilised as a third bedroom further enhancing the properties appeal.

The accommodation comprises a modern hallway, a spacious and bright bay-windowed lounge, two well-proportioned bedrooms, a modern kitchen, and a lovely family bathroom. Private parking can be found at the rear of the property, which also boasts a lovely leafy low maintenance garden and a stunning decked seating area which is ideal for alfresco dining & relaxing in the summer months.

A personal viewing is highly recommended to truly appreciate the quality of finishing and the

convenient setting.

Coatbridge Town Centre offers a variety of local shops, and the nearby Faraday Retail Park features an extensive selection of high street stores. Primary schools are within close proximity, making it an ideal location for families. For those commuting via public transport, nearby Sunnyside train stations provide links to surrounding towns and cities, including Glasgow and Edinburgh. Additionally, the property enjoys excellent accessibility to major roadways, including the M8, A8, and



TOTAL: 1003 sq. ft.
FLOOR 1: 739 sq. ft, FLOOR 2: 264 sq. ft.
EXCLUDED AREAS: FIREPLACE: 6 sq. ft, LOW CEILING: 77 sq. ft, WALLS: 105 sq. ft.
Floor Plan Created By Calcuken App. Measurements Deemed Highly Reliable But Not Guaranteed.

