



Located in the highly desirable St. Martins Gate, Coatbridge this exquisite 2 -bedroom, 2 -bathroom Semi- detached property, offers unparalleled combination of modern living and convenience. Proudly presented AMARCO Estates, this rarely available semi-detached sits on a large plot and is a true gem.

Nestled within the quiet residential neighbourhood in Coatbridge, this spacious and meticulously maintained two-bedroom property is a buyers dream, this property offers comfort, convenience, and style.

Stepping inside, you are greeted by a large lounge area, bathed in natural light that filters through the windows, creating a warm and inviting atmosphere. The spacious layout presents endless possibilities for cosy evenings or lively gatherings with loved ones.

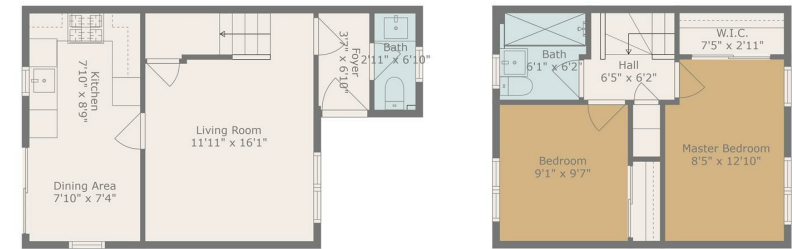
The kitchen/ dining area boasts a modern kitchen with plenty of storage and worktop space, making it perfect for culinary enthusiasts. The kitchen is equipped with everything you need to prepare meals with ease, the breakfast bar is the perfect spot to enjoy mealtimes after a busy day and offers easy access to the lovely rear garden via the French doors. Completing the downstairs and adding to the convenience of this stunning property is a modern W.C.

Ascending the stairs, you are greeted by two well-proportioned bedrooms, the master bedroom benefits from plenty of storage options adding to the functionality of this home. It doesn't end there this floor also benefits from a generously sized second bedroom. The family bathroom on the upper floor invites you to

unwind and rejuvenate in style.

Outdoor living is equally impressive. The property sits on an expansive garden plot that offers both privacy and beauty. The garden is a true haven, featuring well-maintained lawns, mature trees, and a variety of plants. It's the perfect setting for outdoor activities, family barbecues, or simply enjoying a quiet moment surrounded by nature, a calming oasis awaits. This property is a retreat from the hustle and bustle of city life, make this house your home today. Viewing highly recommended.

Coatbridge has the majority of every day shopping needs. There is a great choice of restaurants, bistros, pubs. The property is located within popular school catchments. For those commuting by public transport there are regular bus and train services from Coatbridge to the surrounding towns and cities including Glasgow and Edinburgh. The M74 and M8 motorways provides excellent access to the central belt linking the surrounding towns and cities.



Floor 1

Floor 2



TOTAL: 693 sq. ft.  
FLOOR 1: 371 sq. ft, FLOOR 2: 322 sq. ft

Floor Plan Created by Cubicase App. Measurements Deemed Highly Reliable But Not Guaranteed.

