



AMARCO Estates are proud to be Introducing a remarkable opportunity to acquire an exquisite 2 bedroom penthouse apartment in the desirable Rose Mount Court development in Airdrie.

Welcome to your dream home in the heart of Airdrie. This spacious and beautifully designed large 2 -bedroom property offers a unique blend of contemporary style and modern comforts. With its prime location and excellent transport links, this penthouse apartment is perfect for those looking to settle in one of the prettiest streets in town.

This impressive residence is surrounded by expansive, well-manicured gardens, offering a serene and inviting atmosphere.

The accommodation comprises a spacious entrance with a convenient double cloakroom/storage cupboard. The expansive hallway leads you to the stunning bright windowed lounge and dining room - the perfect space for both relaxation and entertaining. No detail has been overlooked in this show home worthy penthouse.

The well-equipped, modern kitchen which is sure to impress with its high-quality fixtures and fittings. range of integrated appliances ensuring cooking is both easy and enjoyable. It doesn't end there, the contemporary breakfast bar is the ideal spot to enjoy your morning coffee while overlooking the renowned greenery which makes the surrounding area so unique.

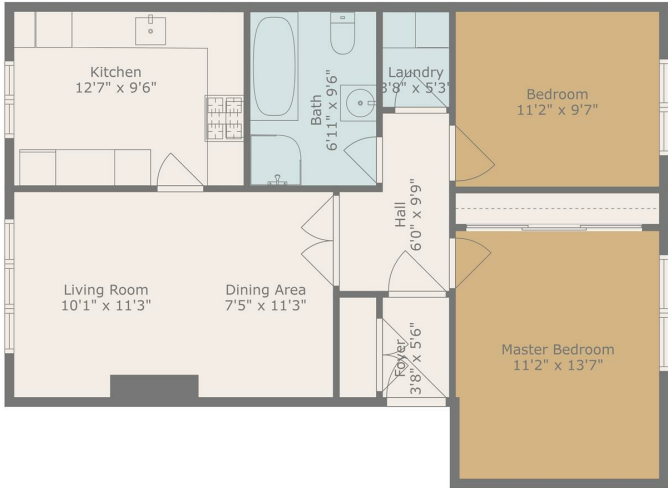
The two double bedrooms offer plenty of room. The master bedroom is both functional and

relaxing, adorned in neutral tones this room is tranquil and relaxing, whilst ensuring all storage is addressed with fitted quadruple wardrobes. The second bedroom enjoy an abundance of natural light and is thoughtfully designed.

Servicing the two double bedrooms is the enormous bathroom boasting; a bath, walk in shower along with a vanity unit that includes a hand basin and WC, offering another functional and stylish space for all your needs. Additional features of the property include an attic space for extra storage, an allocated parking space and a garage, providing both convenience and practicality. The property's top-floor position ensures additional peace and quiet, with no neighbours above.

While the floor plan provides a detailed layout of this well-designed apartment, a personal viewing is highly recommended to truly appreciate the quality of finishing and the convenient setting. Early viewing is highly recommended to fully appreciate all that this property has to offer.

Location is just a five-minute walk from shops, bars, and restaurants, as well as both primary and secondary schools, this property offers easy access to public transport, making your daily commute a breeze. Whether you need to travel to work or explore the surrounding areas, proximity to transportation is within walking distance to this stunning abode.



TOTAL: 795 sq. ft.
FLOOR 1: 795 sq. ft.
Floor Plan Created By Cubicore App. Measurements Deemed Highly Reliable But Not Guaranteed.

