



CLOSING DATE SET FRIDAY 18TH APRIL AT NOON

Welcome 32 Tay Street, this large 3 Bedroom Semi-Detached Property is ideally located in the sought after Townhead Area of Coatbridge

AMARCO Estate Agents are proud to present to the market this three-bedroom semi-detached family home. This rarely available property comprises plenty of living accommodation throughout and is sure to appeal to a whole host of buyers.

On entering the property you will find large sized porch area and hallway, the hallway leads you to the exceptionally large bright living area which is sure to tick many buyers boxes, From the lounge you will enter the kitchen which benefits from a dining space and plenty of storage and ample worktop space - a must for any family or culinary enthusiast. Convenience is key this property benefits from a stunning downstairs bathroom providing ease for everyday family life.

Ascend the staircase and discover three generously sized bedrooms, each offering exceptional storage solutions. Completing the upstairs you will find a modern family bathroom servicing the 3 bedrooms.

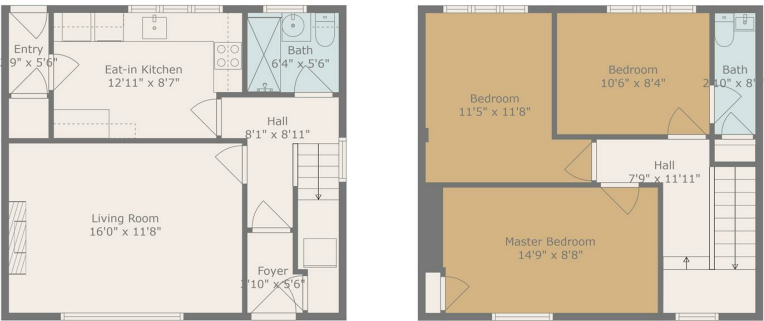
The outside of the property is of large proportion to the front & rear with an expansive rear lawn ideal for families and entertaining in the summer months.

Additional benefits of this lovely home include gas central heating and double glazing, ensuring

comfort and energy efficiency. Viewing is essential to fully appreciate all that this property has to offer.

Don't miss out on this fantastic opportunity - contact us today to arrange a viewing!

The commercial and superb retail centre of Glasgow and be easily accessed in less than 15 minutes by car, while the first-rate leisure and shopping facilities of nearby Glasgow Fort and East Kilbride offers a convenient option as another centre to visit. Even more locally, there is also a wealth of shopping and leisure facilities available in Coatbridge and surrounding towns of the Clyde Valley.



Floor 1

Floor 2



TOTAL: 934 sq. ft.
FLOOR 1: 467 sq. ft, FLOOR 2: 467 sq. ft.
Floor Plan Created By Calcarea App. Measurements Deemed Highly Reliable But Not Guaranteed.

