



Welcome to Woodburn Ave in the Desirable Cairnhill Locale, this 3 bedroom property has warm and inviting ambiance and is sure to appeal to families who are looking for extra space in an amazing location.

AMARCO Estates present this rarely available three-bedroom semi-detached home in the desirable Cairnhill locale. Situated in a peaceful residential area with scenic views, this property is perfect for couples or families looking for a traditional home with ample living space.

Upon entering the property, you are welcomed by a spacious ground floor hall that sets the tone for the rest of this remarkable home. The spacious, bright and airy lounge exudes comfort providing the perfect space to relax and unwind.

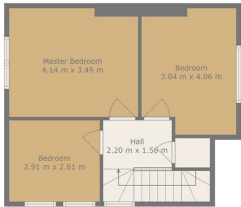
The family kitchen stands ready to inspire culinary creations, boasting ample storage and integrated appliances for seamless functionality, the adjoining open dining space offers a seamless flow throughout the ground floor. A well-appointed family bathroom completes this level facilitating ease.

Upstairs, you'll find three generously sized double bedrooms. There is also plenty of storage throughout this large property, including two expansive cupboards and outdoor storage space.

The property is fully equipped with gas central heating, double glazing, and features a large walkway to the side. The rear garden is fully enclosed, offering privacy and stunning elevated views.

This is a rare and outstanding purchase which is presented as a blank canvas ready to be personalised to your desires.

Located in Cairnhill Airdrie, the property is close to a range of shops, including Gartlea Retail Park, and well-served by local schools for both primary and secondary education. A short walk from Airdrie Train Station, it provides excellent transport links to both Glasgow and Edinburgh city centres. With easy access to major motorway networks, commuting throughout the central belt is a breeze.



Floor 1



TOTAL: 86 m2
FLOOR 1: 43 m2, FLOOR 2: 43 m2
EXCLUDED AREAS: LOW CEILING: 0 m2

Floor Plan Created By Calcane App. Measurements Deemed Highly Reliable But Not Guaranteed.

