



AMARCO Estates are delighted to introduce this stunning 2 bedroom semi-detached property in the popular Coatbridge locale of Parklands

AMARCO Estates are proud to present to the market this fantastic and rarely available two-bedroom semi detached home . Situated within Parklands estate, which is one of Coatbridge's most sought after locations.

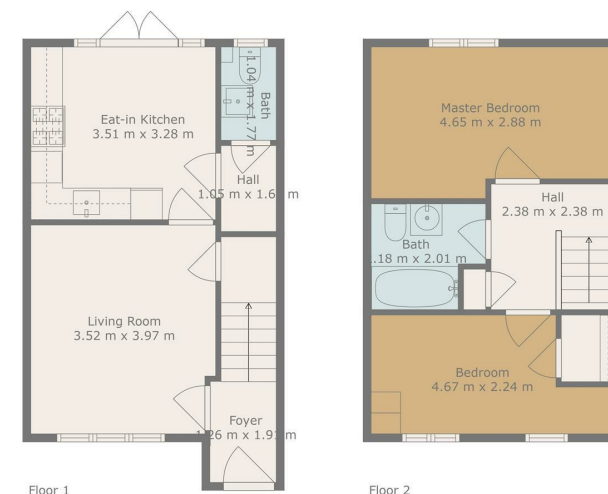
On entering the property you are greeted by a bright hallway which leads you to the large living area bathed in natural light, the natural decor sets a cosy tone throughout . The space invites you to unwind and create cherished moments with loved ones. The heart of the home, a chic kitchen, boasts an area that seamlessly accommodates a lovely dining space making every meal a stylish affair. Adjacent to the kitchen is a handy WC and small utility for everyday essentials.

Ascend upstairs where two double bedrooms await both catering to your lifestyle needs with versatility.

A tranquil family bathroom with a bath offers a serene retreat to rejuvenate after the hustle and bustle of the day. Outside, the property benefits from a private driveway and an inviting south facing garden that promises leisure and entertainment possibilities.

The property is a true credit to it's current owners and is presented in walk in condition. The property will appeal to those downsizing and first time buyers alike. Early viewing is recommended.

Coatbridge is home to excellent schools, shopping facilities, sports amenities, swimming baths and parks. There is also a wide variety of restaurants, bistros and pubs. For those commuting by public transport there are regular bus and train links to the surrounding towns and cities, including Glasgow and Edinburgh with Sunnyside Train Station being located just a short walk away from the property. The nearby M74 and M8 motorways provide excellent road links throughout the west of Scotland.



TOTAL: 70 m²
FLOOR 1: 36 m², FLOOR 2: 34 m²
Floor Plan Created By Calcane App. Measurements Deemed Highly Reliable But Not Guaranteed.

