



2 2 1 C

Amarco Estates are proud to present to the market this beautiful 2-bedroom semi-detached bungalow set within the popular Victoria Park Estate.

This spacious 2-bedroom bungalow features vast amounts of light to envelope every room, the spacious layout allows for dining space. The accommodation is set over one level and comprises ; reception hallway which allows access to lounge, two double bedrooms, kitchen and bathroom. Externally, the property benefits from a garden ground to the front, side and rear of this rarely available property. To the rear of the property the garden is laid mainly to lawn with a paved patio area providing the perfect space for outdoor entertaining throughout the summer months. the array of attractive greenery ensures this property is secluded and private.

The property also offers a paved two car driveway to the side and a garage.

The property is situated across from the popular Faraday Retail Park, Coatbridge has a good selection of shops and schools and is also home to the popular Time Capsule, Drumpellier Country Park and Summerlee Heritage Park. The town also offers quick and easy access to all the major motorway networks for commuting throughout the central belt. For those commuting by public transport there are regular bus and train services from Whifflet, Coatbridge Sunnyside and Coatbridge Central train stations.

Amarco Estates are proud to present to the market this charming 2-bedroom semi- detached bungalow set within the popular Victoria Park Estate.

This spacious 2-bedroom bungalow features vast amounts of light to envelope every room. The accommodation is set over one level and comprises ; reception hallway which allows access to lounge, two double bedrooms, kitchen and bathroom, the spacious layout allows for dining space. . Externally, the property benefits from a garden ground to the front, side, and rear of this rarely available property. To the rear of the property the garden is laid mainly to lawn with a paved patio area providing the perfect space for outdoor entertaining throughout the summer months. the array of attractive greenery ensures this property is secluded and private.

The property also offers a paved two car driveway to the side and a garage.

The property is situated across from the popular Faraday Retail

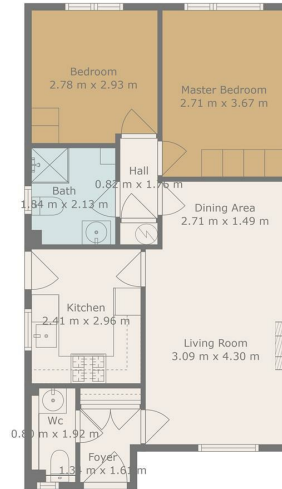
Park, Coatbridge has a good selection of shops and schools and is also home to the popular Time Capsule, Drumpellier Country Park and Summerlee Heritage Park. The town also offers quick and easy access to all the major motorway networks for commuting throughout the central belt. For those commuting by public transport there are regular bus and train services from Whifflet, Coatbridge Sunnyside and Coatbridge Central train stations.

Amarco Estates are proud to present to the market this charming 2-bedroom semi- detached bungalow set within the popular Victoria Park Estate.

This spacious 2-bedroom bungalow features vast amounts of light to envelope every room. The accommodation is set over one level and comprises ; reception hallway which allows access to lounge, two double bedrooms, kitchen and bathroom, the spacious layout allows for dining space. . Externally, the property benefits from a garden ground to the front, side, and rear of this rarely available property. To the rear of the property the garden is laid mainly to lawn with a paved patio area providing the perfect space for outdoor entertaining throughout the summer months. the array of attractive greenery ensures this property is secluded and private.

The property also offers a paved two car driveway to the side and a garage.

The property is situated across from the popular Faraday Retail Park, Coatbridge has a good selection of shops and schools and is also home to the popular Time Capsule, Drumpellier Country Park and Summerlee Heritage Park. The town also offers quick and easy access to all the major motorway networks for commuting throughout the central belt. For those commuting by public transport there are regular bus and train services from Whifflet, Coatbridge Sunnyside and Coatbridge Central train stations.



Total scanned area: 60 m²

Measurements Are Calculated By Callidex Technology. Deemed Highly Reliable But Not Guaranteed.

