



AMARCO Estates are delighted to bring this 2 Bedroom, 2 Bathroom, Ground Floor flat to the market in Lees Court, Whifflet, Coatbridge.

The property is conveniently located on the ground floor which is extremely sought after with those looking to down size for retirement, or those with mobility issues. Likewise the property is very well priced making it attractive for first time buyers and property investors.

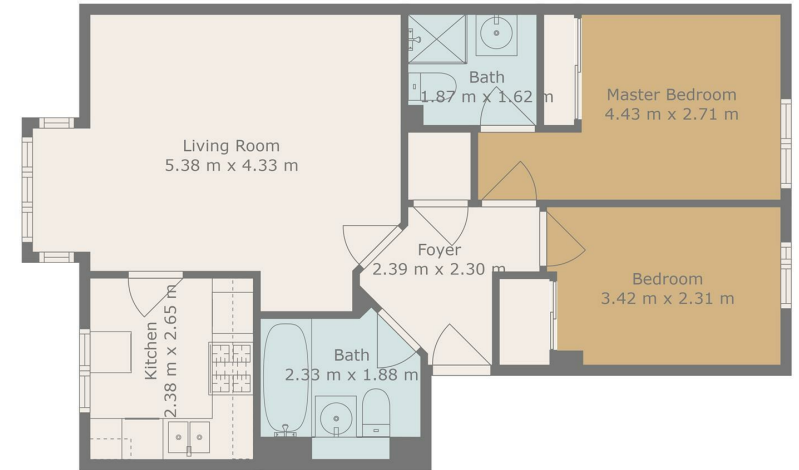
The property is entered via a communal hallway and leads into an inner foyer which gives access to the Livingroom, Main Bathroom, Master Bedroom (with en-suite), bedroom 2 and a storage Cupboard.

The Kitchen is accessed via the Livingroom.

The Livingroom features a box bay window and the property benefits from Gas central Heating and Double Glazing.

The entrance and hallways are managed by a property factor. The property benefits from communal maintained garden areas.

The Whifflet area has excellent local amenities and public transport links including Whifflet Train station and Bus Connections to the Town Centre, Airdrie, East Kilbride. There is Lidl supermarket within a 5 min walk and the Faraday Retail Park is within a 10min walk of the property.



Total scanned area: 60 m²

Measurements Are Calculated By Callidus Technology. Deemed Highly Reliable But Not Guaranteed.

