

AMARCO Estates are delighted to bring you this 2 Bedroom Mid-Terrace property in the Glenboig area.

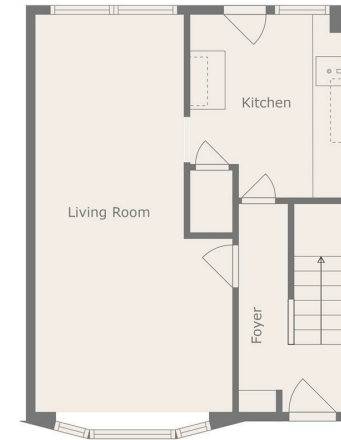
Amarco Estates are delighted to welcome to the market this rarely available two bedroom mid terrace property in the popular leafy village of Glenboig.

This property is ideally suited to a small family or couple looking for extra space.

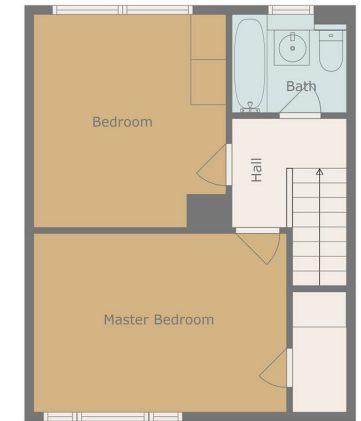
The property is presented in walk in condition, the fabulous mid terrace comprises a welcoming reception hallway, a bright and spacious lounge area which leads to a generous kitchen area.

The upper level comprises two good sized bedrooms with decent storage space. The property also benefits from gas central heating, double glazing and front and rear gardens also compliment this lovely home.

The village of Glenboig is ideally placed for the M8 and M74 links across the central belt, and is a short journey from the Faraday Retail Park in Coatbridge.



Floor 1



Floor 2



Measurements Are Calculated By Cubicasa Technology. Deemed Highly Reliable But Not Guaranteed.

