



BOWDEN
BRADLEY



1 Highland Street
, London, E15 2ZG

£2,500 Per month



1 Highland Street

, London, E15 2ZG

Welcome to Southmere House in the vibrant area within Legacy Wharf, E15! This stunning apartment boasts a spacious reception room, two cosy bedrooms, and two modern bathrooms, one of which is an en-suite. The property features a private courtyard terrace, perfect for enjoying a morning coffee.

Residents of Southmere House have access to fantastic amenities including a gym to keep you active and a roof terrace offering panoramic views of the city. The added convenience of a concierge service ensures that all your needs are taken care of.

With excellent transport links, including the nearby Pudding Mill DLR station & Bow Road tube, commuting around the city is a breeze. You are also nearby to the iconic Queen Elizabeth Olympic Park & the a short walk from Hackney Wick which offers an array of bars & restaurants.

Don't miss out on the chance to make Southmere House your new home - a perfect blend of modern living, convenience, and leisure all in one place!

****Available early July****

Front

Kitchen/Living Room
25'10 x 13'1 (7.87m x 3.99m)

Walk-In Wardrobe
10 x 6'8 (3.05m x 2.03m)





Bedroom
20'2 x 9'8 (6.15m x 2.95m)

En-Suite
7'1 x 5'4 (2.16m x 1.63m)

Bathroom
8'2 x 7'7 (2.49m x 2.31m)

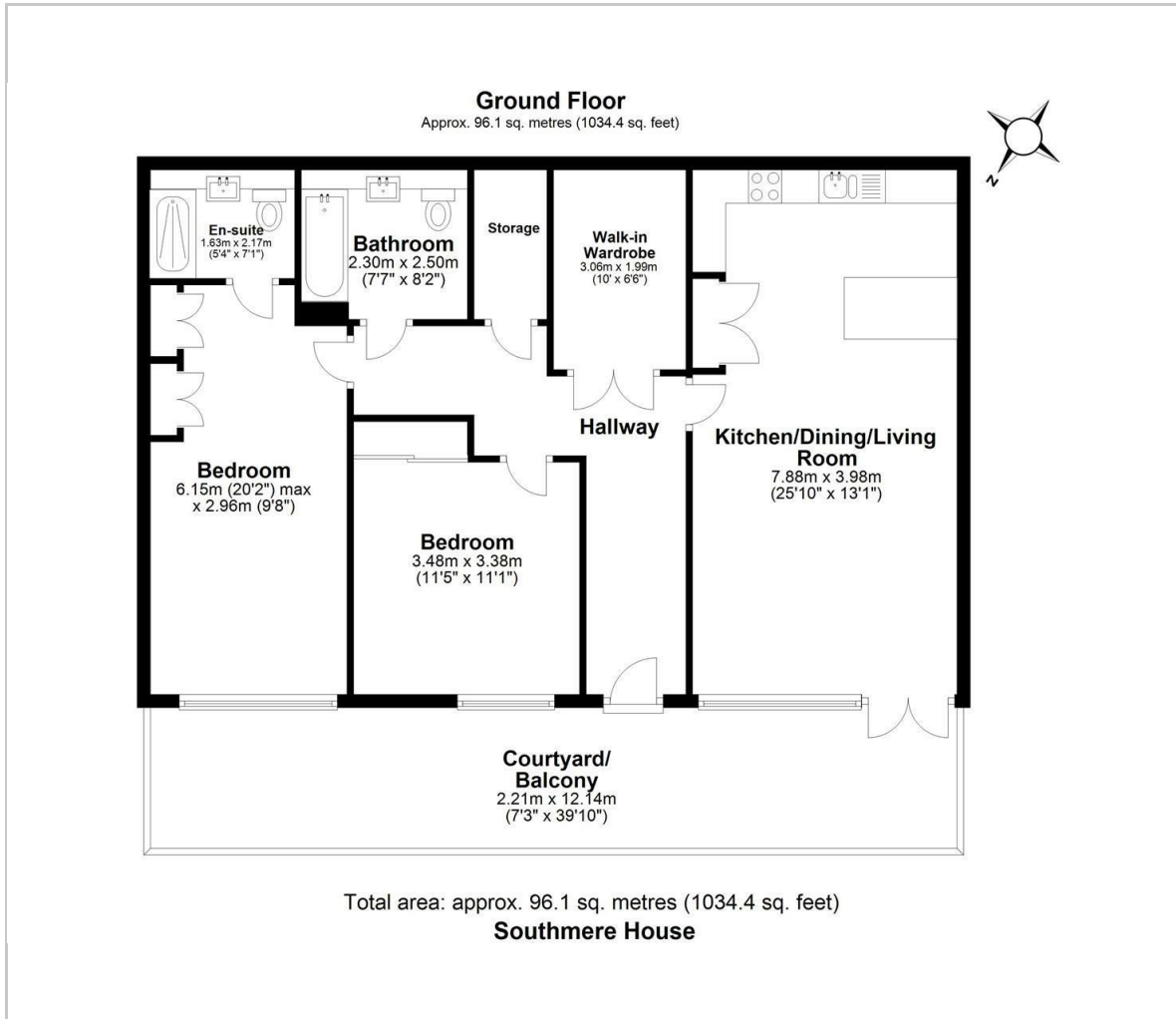
Bedroom
11'5 x 11'1 (3.48m x 3.38m)

Private Courtyard



BOWDEN
BRADLEY

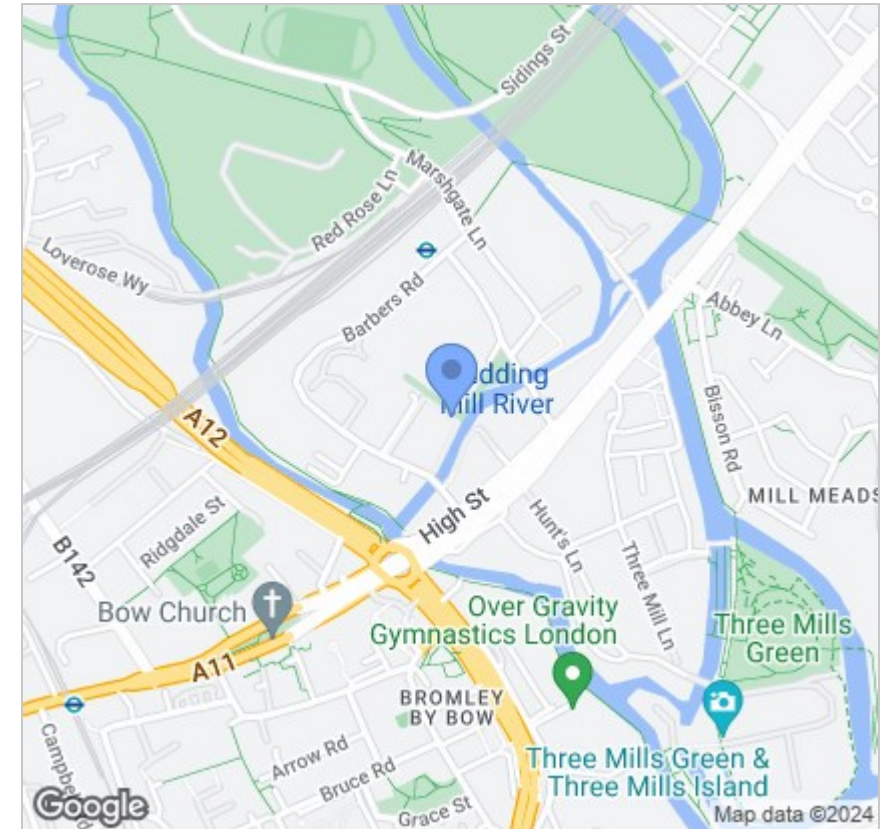
Floor Plan



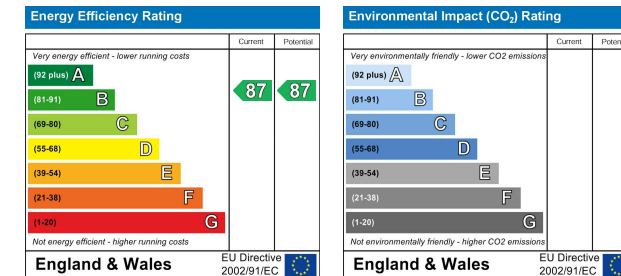
Viewing

Please contact our Bowden Bradley Office on 0208 0593 593 if you wish to arrange a viewing appointment for this property or require further information.

Area Map



Energy Efficiency Graph



These particulars, whilst believed to be accurate are set out as a general outline only for guidance and do not constitute any part of an offer or contract. Intending purchasers should not rely on them as statements of representation of fact, but must satisfy themselves by inspection or otherwise as to their accuracy. No person in this firm's employment has the authority to make or give any representation or warranty in respect of the property.

Bansal House Bracken Industrial Estate, 185 Forest Road, Hainault, Essex, IG6 3HX
Tel: 0208 0593 593 Email: info@bowdenbradley.co.uk