



BOWDEN  
BRADLEY



4 Luther King Close  
, London, E17 8RX

**£1,250 Per month**





## 4 Luther King Close

, London, E17 8RX

**\*Available Immediately / Unfurnished\***

We are pleased to offer this beautiful one bedroom, first floor apartment situated only a short stroll away from Walthamstow Central station, Queens Road overground station as well St James Street station. Lea Bridge Road is only a short walk away which offers an array of shops, cafes, pubs & supermarkets.

The home offers excellent transport links overall with the A12 & A406 being nearby, alongside an array of excellent bus links.

Walthamstow Marshes & the ever popular Lee Valley are also nearby.

The property itself is situated in the Luther King Close development near to Markhouse Road and is presented in immaculate condition throughout with a modern kitchen & bathroom. You have the added benefit of car parking.

Front

Lounge/Diner  
12'2 x 10'2 (3.71m x 3.10m)

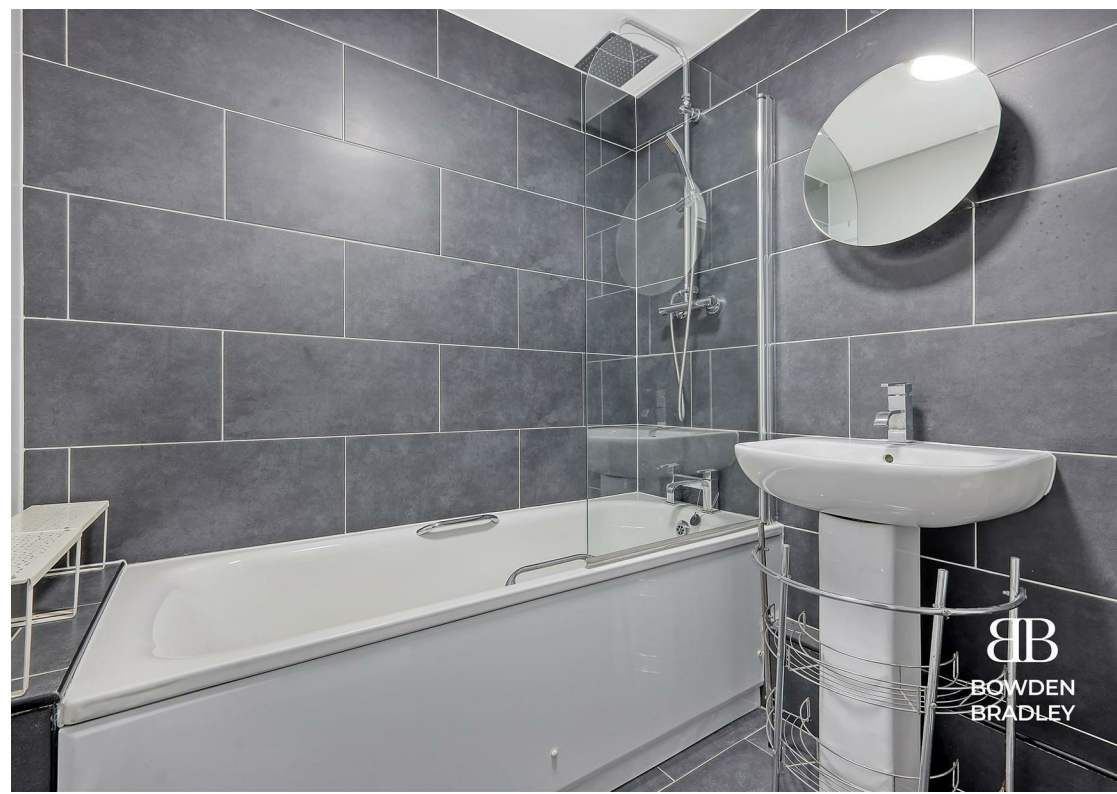
Kitchen  
6'11 x 6'7 (2.11m x 2.01m)

Bedroom  
10'7 x 9'10 (3.23m x 3.00m)

Bathroom

Parking

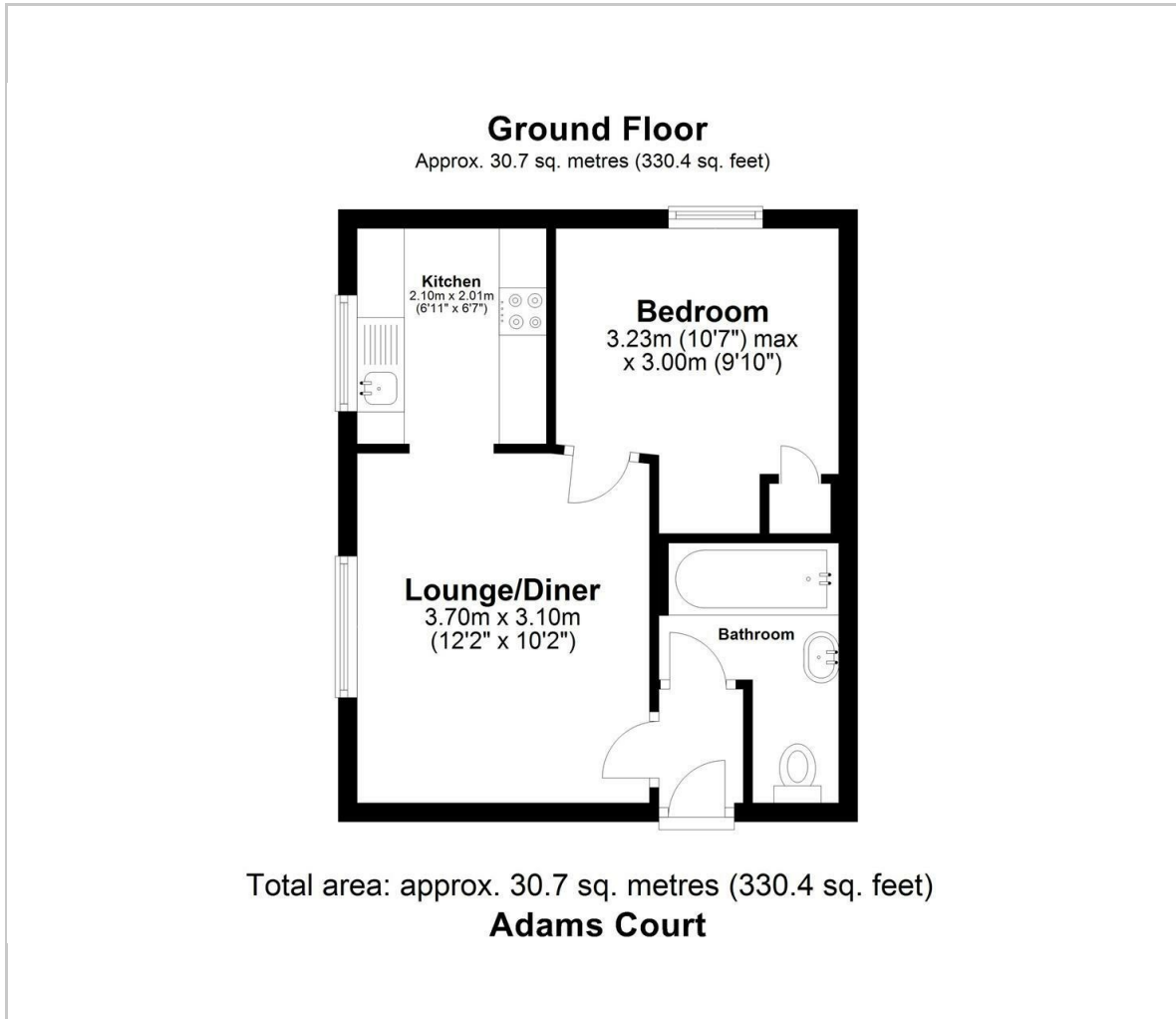
Block







## Floor Plan



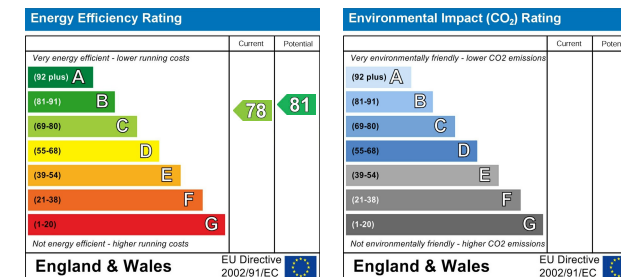
## Viewing

Please contact our Bowden Bradley Office on 0208 0593 593 if you wish to arrange a viewing appointment for this property or require further information.

## Area Map



## Energy Efficiency Graph



These particulars, whilst believed to be accurate are set out as a general outline only for guidance and do not constitute any part of an offer or contract. Intending purchasers should not rely on them as statements of representation of fact, but must satisfy themselves by inspection or otherwise as to their accuracy. No person in this firm's employment has the authority to make or give any representation or warranty in respect of the property.

Bansal House Bracken Industrial Estate, 185 Forest Road, Hainault, Essex, IG6 3HX  
Tel: 0208 0593 593 Email: info@bowdenbradley.co.uk