



BOWDEN
BRADLEY

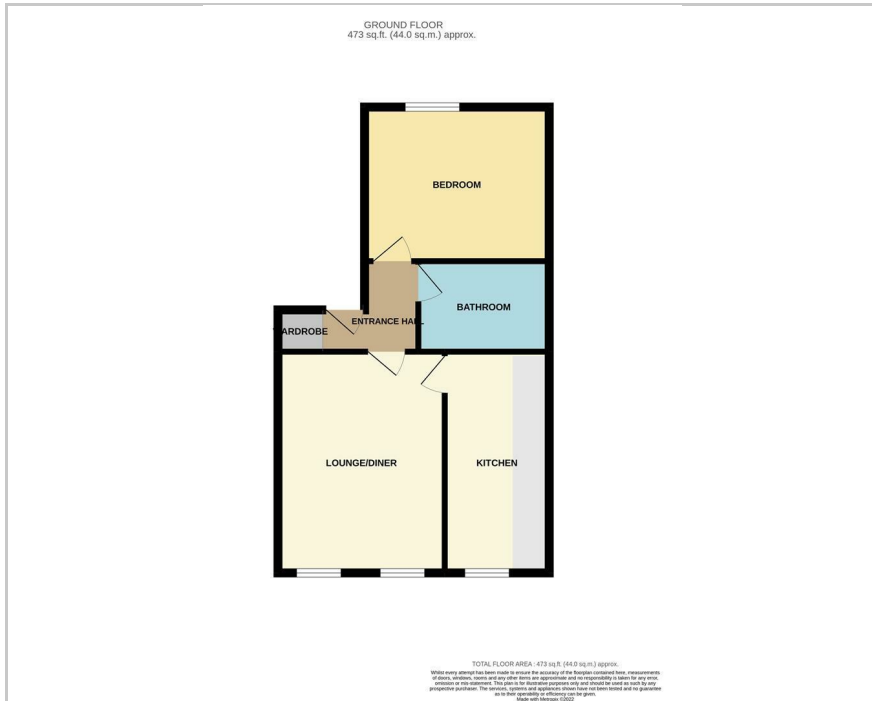


577 High Road Leytonstone, London, E11 4PB

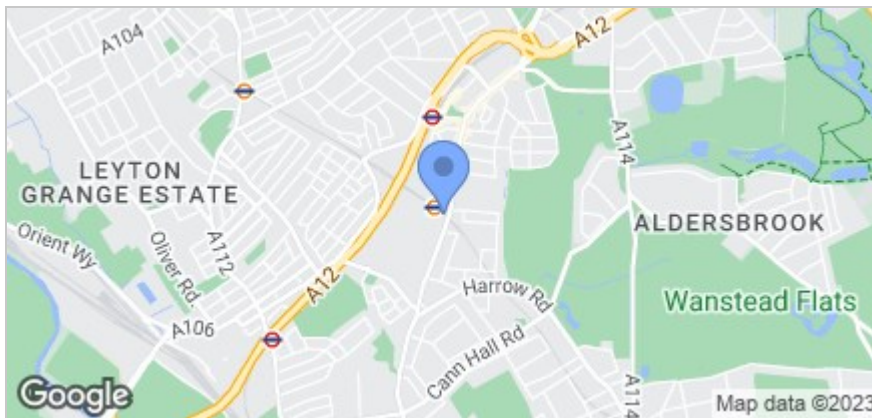
£1,250 Per month



Floor Plan



Area Map



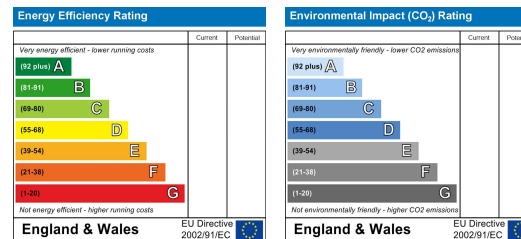
Accommodation

- Second Floor Apartment
- Available Immediately
- Spacious Rooms
- Short Walk to Leytonstone High Road Station
- Near to Local Shops
- Short Walk to Wanstead Flats

Viewing

Please contact our Bowden Bradley Office on 0208 0593 593 if you wish to arrange a viewing appointment for this property or require further information.

Energy Efficiency Graph



These particulars, whilst believed to be accurate are set out as a general outline only for guidance and do not constitute any part of an offer or contract. Intending purchasers should not rely on them as statements of representation of fact, but must satisfy themselves by inspection or otherwise as to their accuracy. No person in this firm's employment has the authority to make or give any representation or warranty in respect of the property.