



**BOWDEN  
BRADLEY**



## 53 Woodman Path, Ilford, IG6 3AX

Guide price £425,000

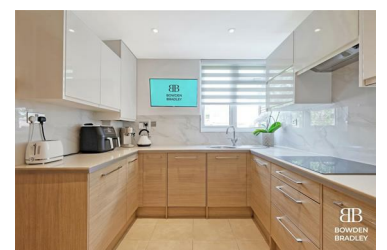


PRICE GUIDE £425,000 - £450,000

Welcome to Woodman Path, Hainault - a charming location that could soon be your new home! This mid-terrace house boasts a delightful blend of modern living and classic charm, with being only 0.4 miles from Hainault station it makes commuting a breeze.

Step inside to discover a beautifully refurbished property that exudes elegance and style. The spacious reception room is perfect for entertaining guests or simply relaxing with your loved ones.

With three generously sized bedrooms, there's plenty of space for the whole family to unwind and make each room their own. The modern



- PRICE GUIDE £425,000 - £450,000
- Fully Refurbished To A High Spec
- 0.4 Miles To Hainault Station
- Short Walk To Hainault Recreation Grounds
- Downstairs WC
- 3 Bedroom Mid Terrace Property
- Modern Kitchen With Integrated Appliances
- Good Schools In Close Proximity
- Beautifully Designed Garden For Inside & Out Living
- Sitting Over 1000 sqft