

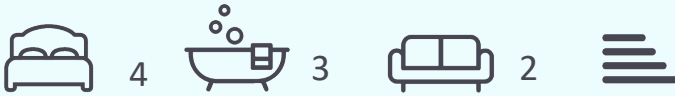


**BOWDEN
BRADLEY**



255 Woodward Road, Dagenham, RM9 4TD

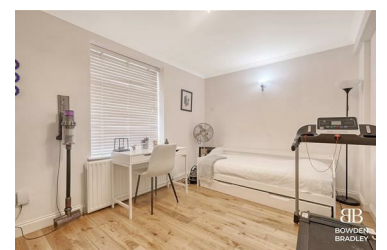
Guide price £500,000



Guide Price £500,000-£525,000 - Welcome to this stunning 4-bedroom residence nestled on the borders of Becontree and Upney. A true testament to modern living, this stunning property is a fusion of elegance and functionality, boasting meticulous attention to detail throughout.

Step inside to discover a spacious layout, meticulously designed to cater to the needs of contemporary family living. The ground floor welcomes you with two generously sized reception rooms, offering versatile spaces for relaxation and entertainment. The modern open-plan kitchen is a culinary haven, featuring sleek fittings and ample storage, perfect for the avid chef and hosting gatherings.

This home has been thoughtfully extended to the rear and loft, providing additional living space and flexibility. The main bedroom is a sanctuary of tranquillity, complete with an en-suite bathroom for added convenience. With three additional bedrooms, there's no shortage of space for the whole-



- Guide Price £500,000-£525,000
- Extended to Rear and Loft
- Immaculate Condition Throughout
- Only 0.5 Miles to Upney Station
- Utility Room
- 4 Bedroom Semi Detached House
- En Suite to Main Bedroom
- Ground Floor Shower Room and First Floor Bathroom
- Useful Outbuilding
- Must View For Modern Families