



BOWDEN
BRADLEY



5 Lime Grove
, Hainault, IG6 3DR

Guide price £550,000



5 Lime Grove

, Hainault, IG6 3DR

Guide Price £550,000 - £600,000 - Welcome to your new family home in the heart of Hainault! Nestled just a stone's throw away from the underground station, this charming 4-bedroom bungalow on Lime Grove offers the perfect blend of convenience and tranquillity.

As you step inside, you'll be greeted by a warm and inviting atmosphere. The property boasts two spacious reception rooms, providing ample space for relaxation and entertaining guests. With four generously sized bedrooms, there's plenty of room for the whole family to spread out and make themselves at home. Plus, the versatile office space offers the potential to be used as a fifth bedroom, providing even more flexibility to suit your needs.

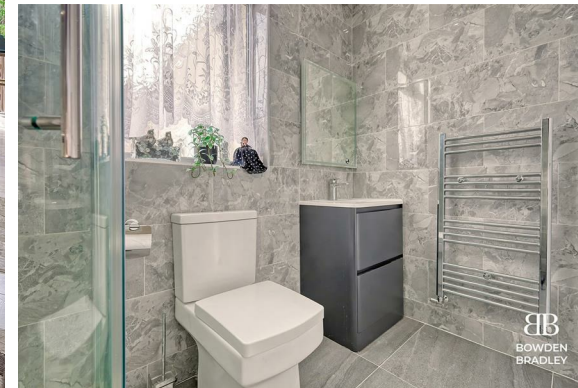
One of the highlights of this property is its seamless extension at the rear, creating a large open-plan living area that's perfect for hosting gatherings and creating lasting memories with family and friends. Imagine enjoying leisurely weekend brunches or cosy evenings by the fireplace in this inviting space.

Surrounded by plenty of amenities, including shops, restaurants, and schools, everything you need is right at your doorstep. Yet, despite its central location, Lime Grove remains a quiet and peaceful street, offering a serene retreat from the hustle and bustle of everyday life.

Don't miss out on the opportunity to make this wonderful property your new home. Contact us today to arrange a viewing and start envisioning your future in this delightful Hainault abode.

Bowden Bradley Estate Agents are the seller's agent for this property. Your conveyancer is legally responsible for ensuring any purchase agreement fully protects your position. We make detailed enquiries of the seller to ensure the information provided is as accurate as possible. Please inform us if you become aware of any information being inaccurate.

Frontal





Garden
27'10" x 74'8" (8.50 x 22.77)

Bedroom
11'11" x 12'0" (3.64 x 3.68)

Living Room
11'11" x 14'6" (3.64 x 4.43)

Bedroom
9'1" x 7'2" (2.79 x 2.19)

Shower Room

Bedroom
6'11" x 7'5" (2.11 x 2.28)

Reception
14'0" x 12'7" (4.29 x 3.85)

Kitchen/Diner
17'5" x 10'11" (5.31 x 3.34)

Hall

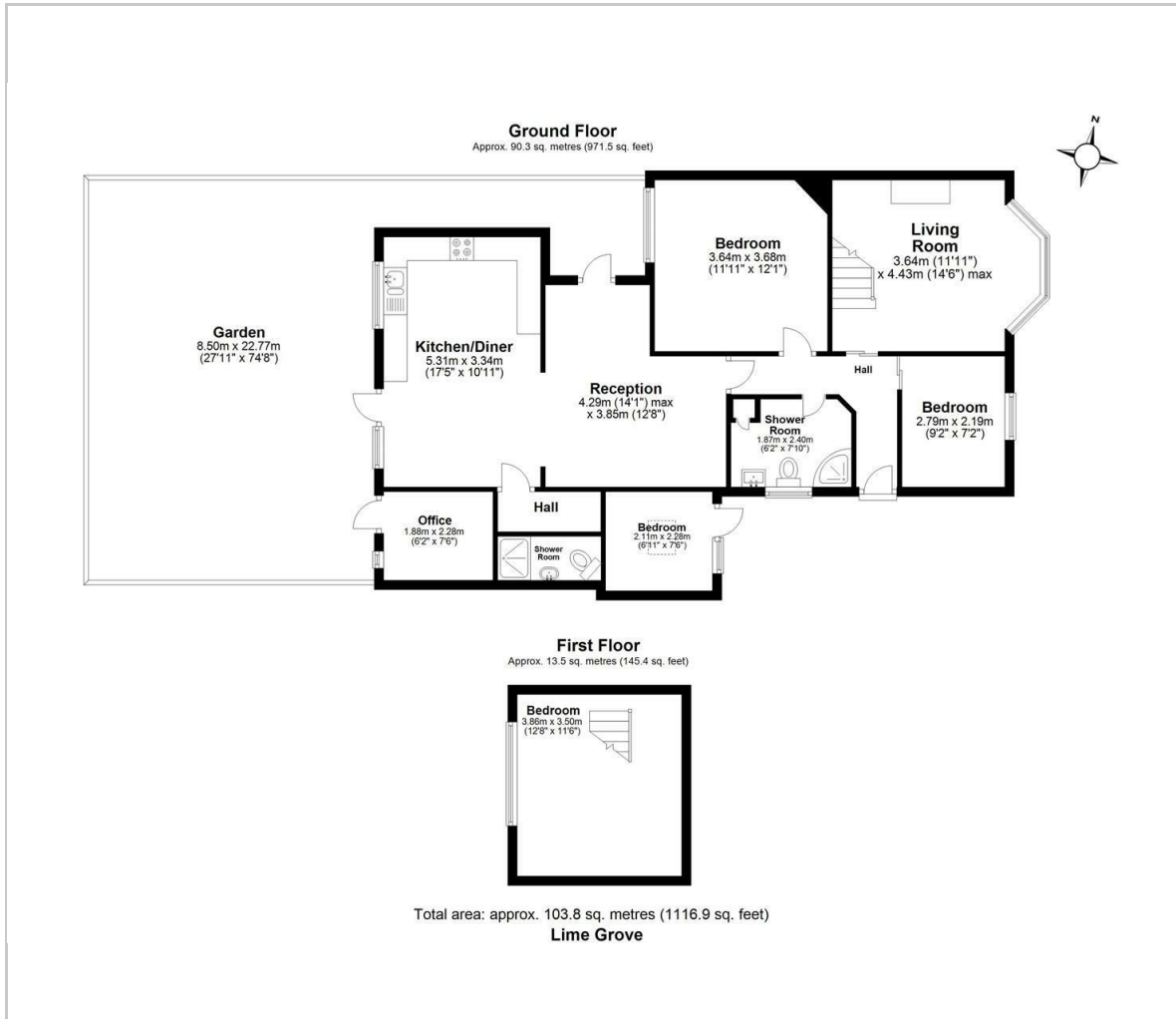
Office
6'2" x 7'5" (1.88 x 2.28)

Shower Room

Bedroom
12'7" x 11'5" (3.86 x 3.50)



Floor Plan



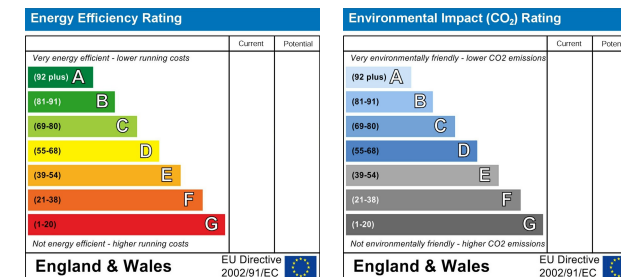
Viewing

Please contact our Bowden Bradley Office on 0208 0593 593 if you wish to arrange a viewing appointment for this property or require further information.

Area Map



Energy Efficiency Graph



These particulars, whilst believed to be accurate are set out as a general outline only for guidance and do not constitute any part of an offer or contract. Intending purchasers should not rely on them as statements of representation of fact, but must satisfy themselves by inspection or otherwise as to their accuracy. No person in this firm's employment has the authority to make or give any representation or warranty in respect of the property.

Bansal House Bracken Industrial Estate, 185 Forest Road, Hainault, Essex, IG6 3HX
Tel: 0208 0593 593 Email: info@bowdenbradley.co.uk