



BOWDEN  
BRADLEY



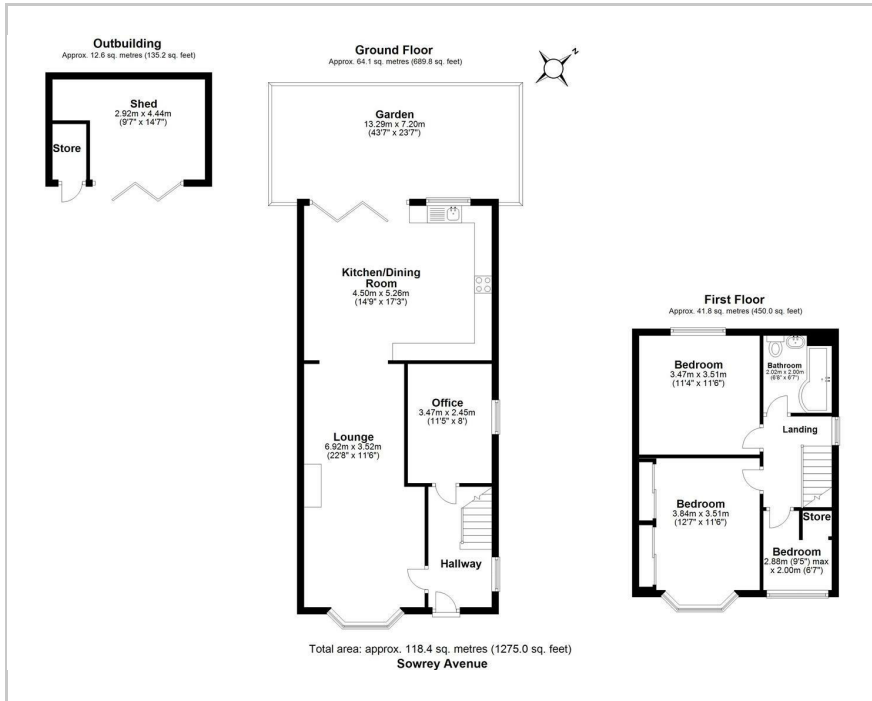
BOWDEN

19 Sowrey Avenue, Rainham, RM13 7LX

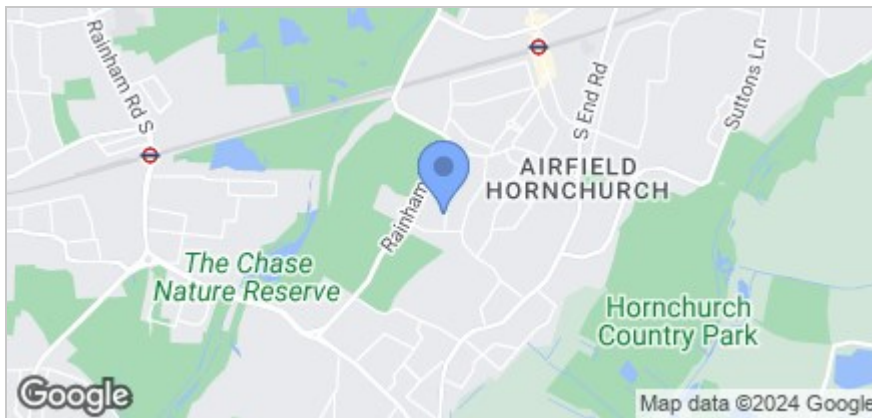
Guide price £475,000



## Floor Plan



## Area Map



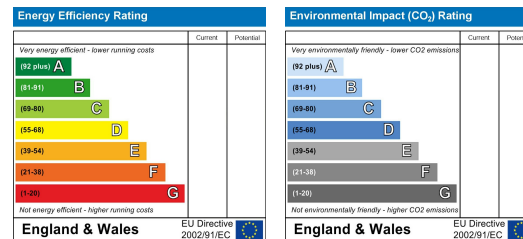
## Accommodation

- Guide Price £475,000 - £500,000
- Stunning Extended Kitchen Area
- Large, Low Maintenance Rear Garden
- Outbuilding to Rear
- Off Road Parking
- Spacious Lounge and Dining Area
- Ground Floor Office
- Only 0.8 Miles from Elm Park Station
- Close to Bretons Outdoor Recreation Centre
- Attractive Bathroom

## Viewing

Please contact our Bowden Bradley Office on 0208 0593 593 if you wish to arrange a viewing appointment for this property or require further information.

## Energy Efficiency Graph



These particulars, whilst believed to be accurate are set out as a general outline only for guidance and do not constitute any part of an offer or contract. Intending purchasers should not rely on them as statements of representation of fact, but must satisfy themselves by inspection or otherwise as to their accuracy. No person in this firm's employment has the authority to make or give any representation or warranty in respect of the property.