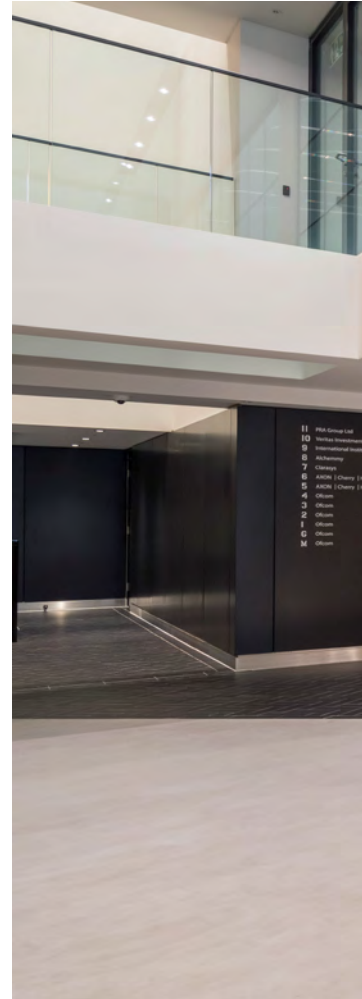




Riverside House
Bankside SE1

2A Southwark Bridge Road

Riverside House provides 12,518 sq ft of refurbished space in a prominent waterside position on Bankside.



The building has undergone a recent refurbishment, and offers two new receptions and a co-working area. The end-of-journey facilities are newly enhanced to provide exceptional occupier benefits.



Specification.



Two building receptions



Terrace overlooking the river



New co-working lounge



LED lighting



136 Secure cycle parking facilities



Chilled beam air-conditioning



Showers and changing facilities



Panoramic views



EPC Rating C



BREEAM Very Good



The space offers unrivalled panoramic views over the City of London & St Paul's Cathedral.

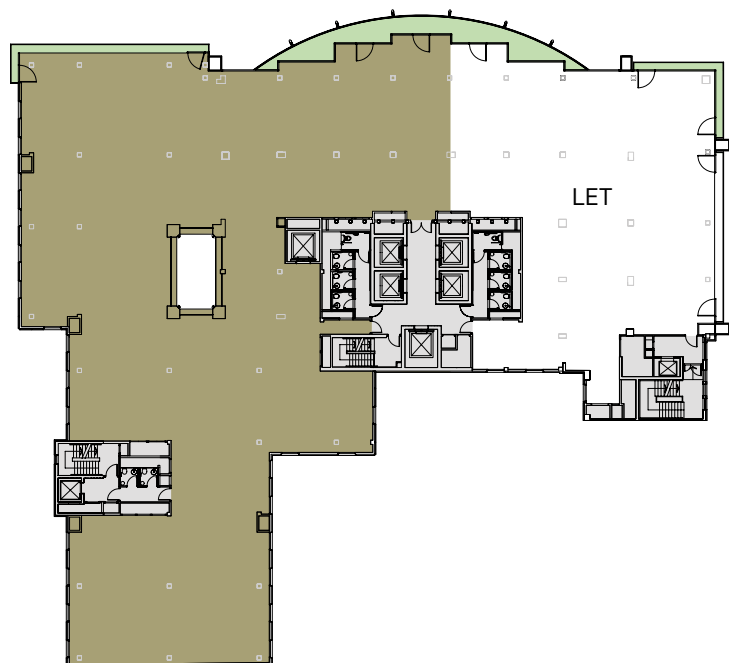
The Part 4th floor features a spacious balcony overlooking the River Thames and floor to ceiling glazing, creating light filled space.





Part 4th Floor.

12,518 sq ft (1,163 sq m)



For indicative purposes only. Not to scale.



Situated in
buzzy Bankside
surrounded
by lively bars,
restaurants and
amenities.





Bankside has a thriving food and beverage scene, with artisan coffee shops, destination bars and acclaimed restaurants. From experimental street food to Michelin starred chefs there's something to suit any occasion.



London Bridge, Southwark, Mansion House, Cannon Street & Blackfriars underground and rail stations are a short walk away, providing ease of movement across London and beyond.



Mansion House.
7 minutes

Cannon Street.
7 minutes

London Bridge.
7 minutes

Bank.
10 minutes

Waterloo East.
14 minutes

King's Cross St Pancras.
18 minutes

Bond Street.
18 minutes

Canary Wharf.
22 minutes

City Airport.
32 minutes

Gatwick Airport.
39 minutes

Bankside Pier.
3 minutes

Blackfriars.
6 minutes

All journey times taken from the building. Source: TfL.

Local Occupiers

1. Allies and Morrison
2. Boodle Hatfield
3. Kroll
4. HSBC
5. EY
6. Brandnation
7. Joseph Joseph
8. Mozilla
9. News UK
10. Ofcom
11. Ogilvy
12. Omnicom
13. PwC
14. reForm Architects
15. Telstra
16. TfL

17. Telstra
18. Cheil
19. Totaljobs
20. TP Bennett
21. Informa Markets
22. WeWork
23. WPP

Bars & Restaurants

1. Aqua Shard
2. Bedale's
3. Brindisa
4. Caravan
5. Elliot's
6. Fish!
7. Hawksmoor
8. Casa do Frango

9. Honest Burger
10. Hutong
11. London Grind
12. Oblix
13. Padella
14. Roast
15. Table
16. The Breakfast Club
17. The Real Greek
18. The Swan
19. Wright's
20. Zizzi

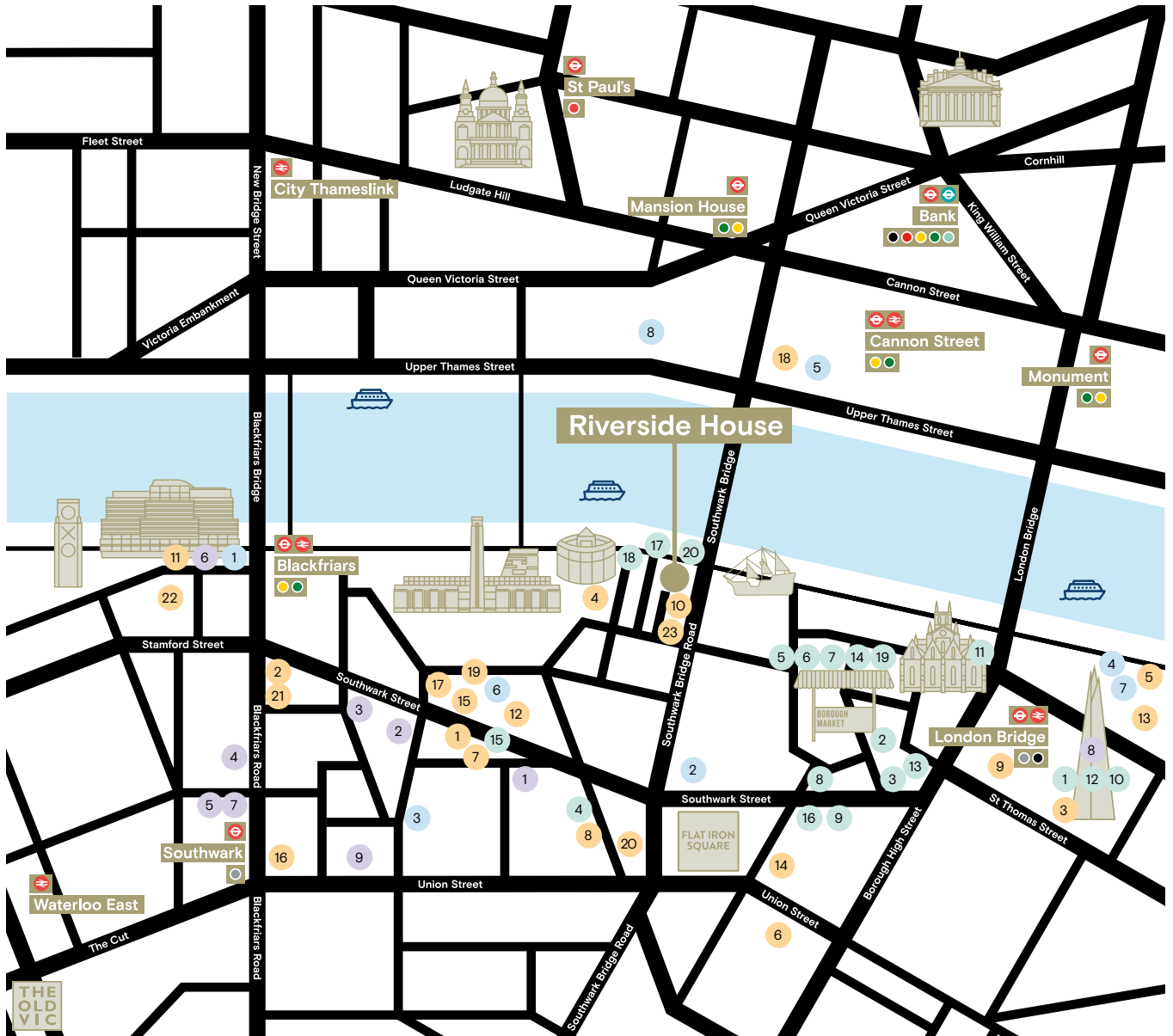
Hotels

1. CitizenM
2. Hilton
3. Holiday Inn

4. Hoxton Hotel
5. Ibis
6. Mondrian London
7. Novotel
8. Shangri-La hotel
9. Travelodge

Fitness

1. 1Rebel
2. F45
3. Fitness4Less
4. Fitness First
5. Nuffield Health
6. The Bankside Health Club
7. Third Space
8. Virgin Active



riversidehouselondon.com

Terms.

Available upon request.

Viewings.

Strictly through sole letting agents:

Amy Bryant

07551 172 931

abryant@geraldeve.com

Simon Glennon

07826 353 526

sglennon@geraldeve.com



GERALDEVE

Conditions under which these particulars are issued:

Gerald Eve LLP is obliged by law to carry out customer due diligence procedures in connection with property transactions. Any prospective purchaser or lessee may be requested to provide information in connection with Gerald Eve LLP's obligations under the Money Laundering, Terrorist Financing and Transfer of Funds (Information on the Payer) Regulations 2017, including as regards - verifying the identity of the Purchaser or Lessee and its beneficial owners, identifying the source of wealth for the transaction, understanding the purpose of the transaction, and, assessing the level of risk that the transaction poses.

All details in these particulars are given in good faith, but Gerald Eve LLP for themselves and the Vendors/Lessors of this property for whom they act give notice that:

1. These particulars do not and shall not constitute, in whole or in part, an offer or a contract or part thereof, and Gerald Eve LLP have no authority to make or enter into any such offer or contract.
2. All statements contained in these particulars are made without acceptance any liability in negligence or otherwise by Gerald Eve LLP, for themselves or for the Vendors/Lessors.
3. None of the statements contained in these particulars is to be relied on as a statement or representation of fact or warranty on any matter whatsoever, and intending purchasers must satisfy themselves by whatever means as to the correctness of any statements made within these particulars.
4. The Vendors/Lessors do not make, give or imply, nor do Gerald Eve LLP or any person in their employment have any authority to make, give or imply, whether in these particulars or otherwise, any representation or warranty whatsoever in relation to the property.

Misrepresentation Act 1967: Gerald Eve LLP for themselves and for the Vendor(s) or Lessor(s) of this property whose agents they are, give notice that these particulars do not constitute, nor constitute any part of an offer or contract. The statement does not affect any potential liability under the Consumer Protection from Unfair Trading Regulations 2008 (CPRs) and Business Protection from Misleading Market Regulations 2008 (BPMRs). Particulars issued January 2023. Gerald Eve LLP is a Limited Liability Partnership registered in England and Wales with registered number OC339470 and its registered office at One Fitzroy, 6 Mortimer Street, London, W1T 3JJ. February 2023.