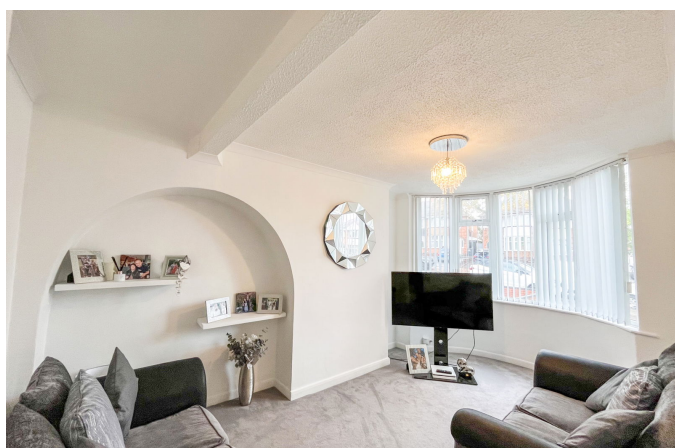


Gilberstone Avenue, Birmingham, B26

£295,000

3 2 2



- Beautiful 3-bedroom semi-detached home on Gilbertstone Avenue, Birmingham
- Extended with a spacious breakfast kitchen featuring a central island
- Open flow to utility room, W.C., garage, and rear garden
- Close to Kings Norton (2 miles) and Bournville (3 miles) train stations with good services
- Freehold, Recently commissioned Double glazed windows. Central Heating
- Modern ground floor with sleek laminate flooring
- Contemporary kitchen includes a recent dishwasher and new oven
- Upstairs with three large bedrooms and a contemporary family bathroom
- Large blocked driveway



Introducing Gilbertstone Avenue, Birmingham – A Stunning 3-Bedroom Semi-Detached Family Home

Situated on a desirable residential street, this beautifully presented semi-detached family residence offers a harmonious blend of modern upgrades and comfortable living space. The

property boasts a sleek wood laminate flooring that flows seamlessly throughout the ground floor, creating a warm and inviting atmosphere.